



## The Heart of Kansas City!

- 245,507 SF cross-dock distribution building
- Four drive-in loading doors (at the four corners)
- 32' clear height
- 70 docks (cross-dock configuration) plus future knockouts
- 269 car parking spaces in dedicated area
- 46 trailer parking spaces in dedicated area
- ESFR sprinkler system

## For more information:

Zach Hubbard, SIOR  
816.932.5504  
zhu Hubbard@blockllc.com

Kenneth G. Block, SIOR, CCIM  
816.932.5551  
kblock@blockllc.com

Michael R. Block, CPM  
816.932.5549  
mblock@blockllc.com

The information contained in this marketing flyer is presented as general information only. Block Real Estate Services, LLC. makes no representation as to its accuracy. This information is not intended as legal, financial or real estate advice and must not be relied upon as such. You should make your own inquiries, obtain independent inspections, and seek professional advice tailored to your specific circumstances before making any legal, financial or real estate decisions.

## Building Specifications

Address:	5710-5870 NW 41st Street, Riverside, Missouri
Size:	245,507 sf (750' x 320'+/-)
Land Area:	14.285 acres
Parking Spaces:	269
Trailer Drop Lot:	46 dedicated positions. Parking lot is 128' on the north side and 130' plus an additional 55' (trailer parking area) on the south side. A 7" thick un-reinforced concrete apron will extend 60' from the face of the building.
Roof:	TPO mechanically fastened with R-25 insulation
Floors:	7" un-reinforced 4,000psi concrete on 4" of compacted granular fill
Heating:	Initial heating is by gas-fired unit heaters and/or Cambridge type units designed for freeze protection
Sprinkler Type:	In accordance with NFPA13, NFPA30 and NFPA231
Lighting:	LED lighting with motion sensors and EM ballasts providing 25 F.C. at 36" AFF
Electrical Service:	4,200amps. Bunzl (1600amps); Shell (200amps); Orange EV (1,200amps)
Column Spacing:	54'6" East-West (except end bayspace 50') by 50' North-South except speed bays are 60'
Office:	Build-To-Suit with glass at the four corners, a fifth potential office area is in the middle on the north face of the building.
Drive-ins:	Four (4) 12' x 14' drive-in doors, each located at one corner of the building adjacent to the glass areas which are for build-to-suit offices
Docks:	All 9'x 10' with 30 on the north side of the building and 32 on the south. With each side having 18 doors designed for pitlevelers.
Clear Height:	32' min clear height with pitch to 36'
Telecommunications:	Conduits for Technology cabling are provided to the building at the Dmarc location which is at the center of the east end in the electrical room. The building is located in Horizons Business Park with fiber in the street (north side of NW 41st). The copper provider is AT&T. Time Warner and some fiber runs on the main street, as provided through Level 3 Communications, but would need to be built to the site.

## Riverside Logistics Centre - Bldg. 1

All utilities except for water will be separately metered. Tenant will arrange for all utilities to be placed in their name.

Utilities:

- Water: Missouri American Water
- Sewer: Kansas City Water Services Department
- Electrical: KCPL
- Gas: Missouri Gas Energy
- Phone: AT&T

Net Charges:  
(2024 Estimates)

- RE Taxes: \$1.44 PSF
- Insurance: \$0.20 PSF
- CAM: \$1.31 PSF
- Total: \$2.95 PSF

Incentives:

- Low real estate taxes due to Riverside's lack of City Real Estate Tax
- Located within an Enhanced Enterprise Zone
- The lowest permit fees in the KC Metro per SIOR/UMKC study
- Developer Incentive paid directly to Tenant based upon payroll
- No E-Tax
- KCPL Economic Development Rider Program eligible

### For more information:

Zach Hubbard, SIOR  
816.932.5504  
zhubbard@blockllc.com

Kenneth G. Block, SIOR,  
CCIM  
816.932.5551  
kblock@blockllc.com

Michael R. Block, CPM  
816.932.5549  
mblock@blockllc.com



## Property Photos

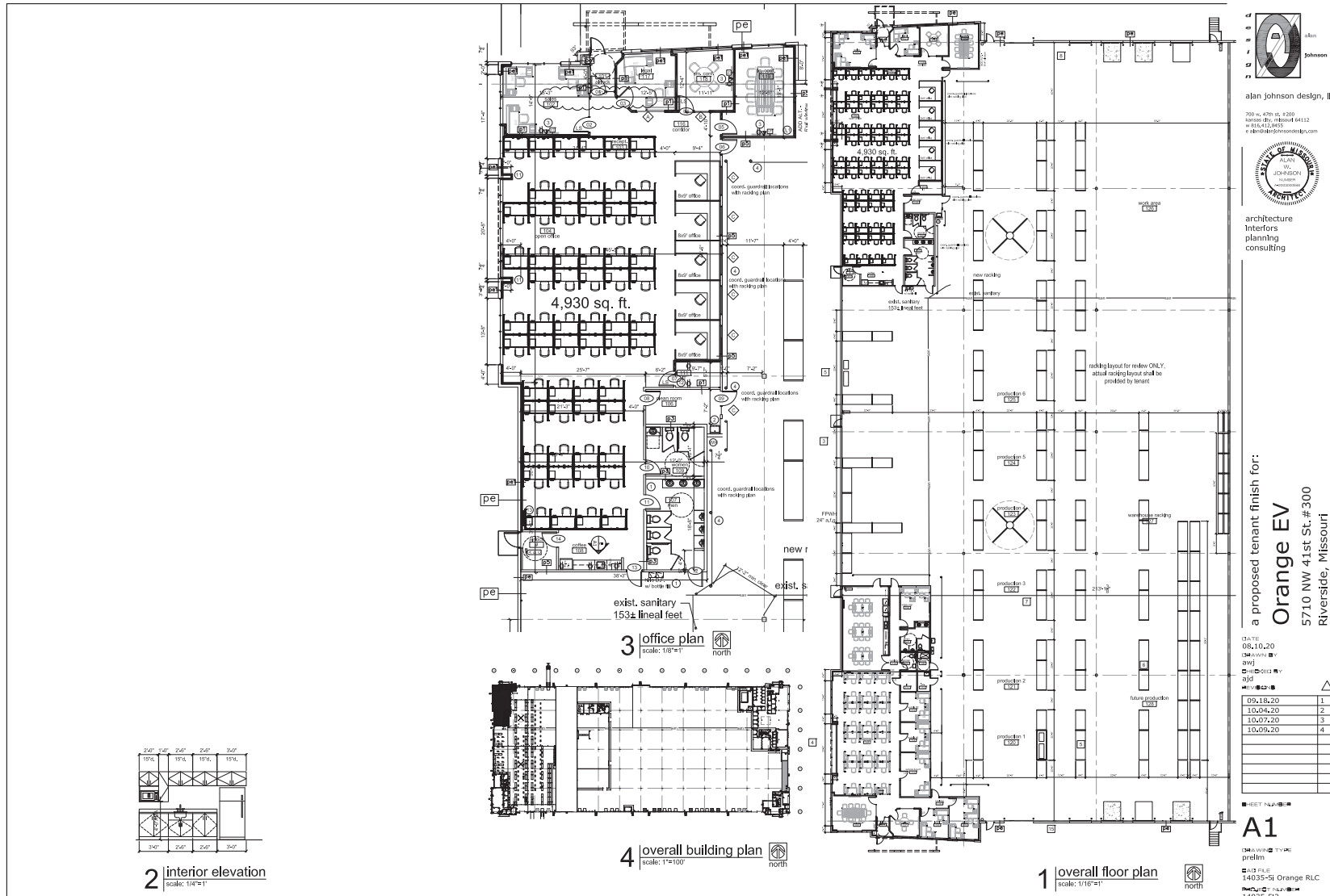




# Riverside Logistics Centre - Bldg. 1

5710-5870 NW 41<sup>st</sup> Street, Riverside, Missouri

# For Lease



alan johnson design, llc  
700 W. 47th St. #200  
Kansas City, Missouri 64112  
913.647.5295  
e: alan@alanjohnsondesign.com



architecture  
interiors  
planning  
consulting

a proposed tenant finish for:  
**Orange EV**  
5710 NW 41st St. # 300  
Riverside, Missouri

DATE: 08.10.20  
DRAWN BY: [initials]  
DWG: [initials]  
REV: [initials]  
ajd

09.18.20	1
10.04.20	2
10.07.20	3
10.09.20	4

**A1**

ORANGE EV  
prelim  
#1000000000000000  
14035-SI Orange RLC  
#1000000000000000  
14035-SI

# Riverside Logistics Centre - Bldg. 1

5710-5870 NW 41<sup>st</sup> Street, Riverside, Missouri

# For Lease



4622 Pennsylvania Avenue, Suite 700  
Kansas City, MO 64112  
816.756.1400 | www.BLOCKLLC.com

**BLOCK**  
REAL ESTATE SERVICES, LLC



# Riverside Logistics Centre - Bldg. 1

5710-5870 NW 41<sup>st</sup> Street, Riverside, Missouri

# For Lease



4622 Pennsylvania Avenue, Suite 700  
Kansas City, MO 64112  
816.756.1400 | [www.BLOCKLLC.com](http://www.BLOCKLLC.com)

**BLOCK**  
REAL ESTATE SERVICES, LLC

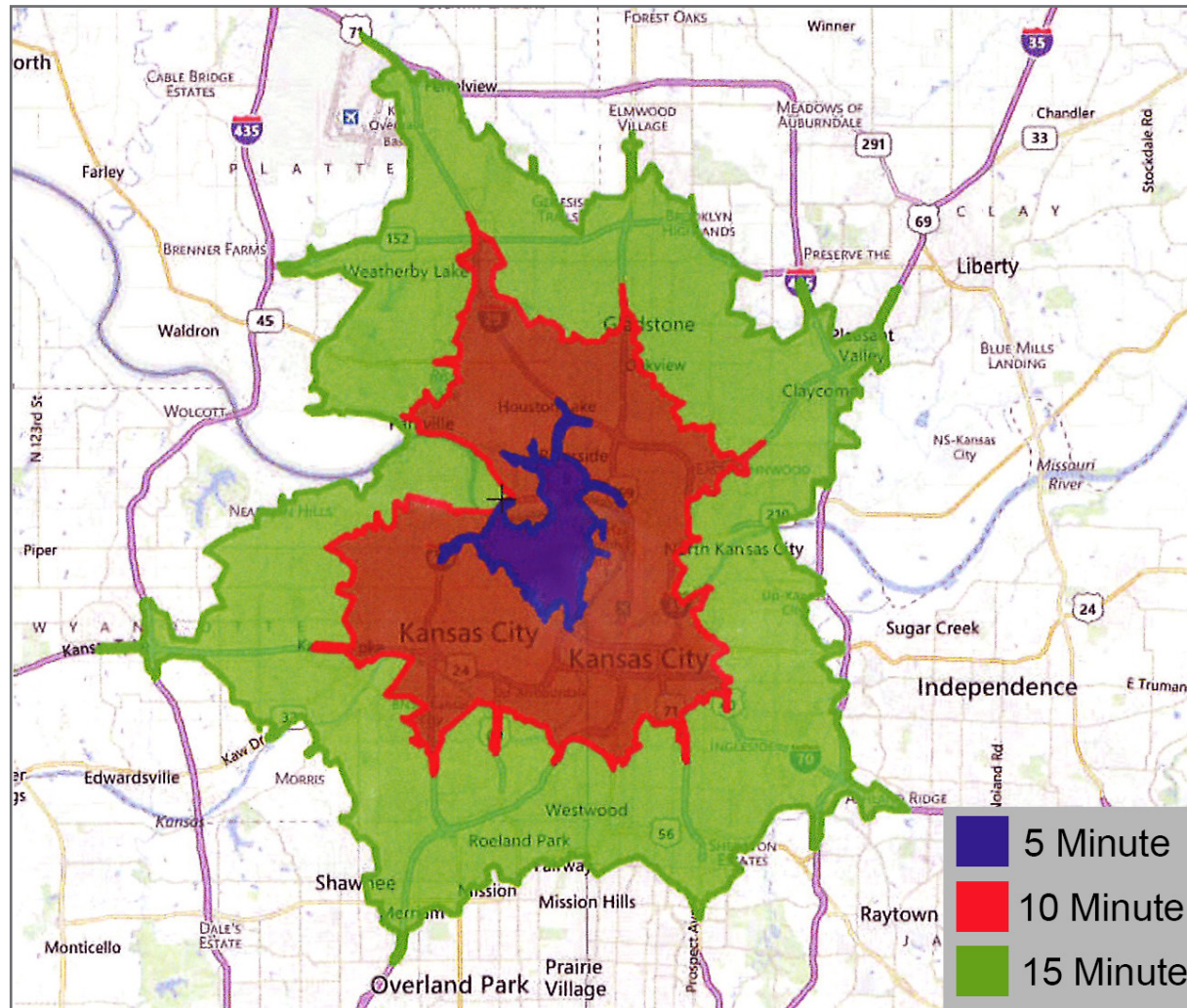


# Riverside Logistics Centre - Bldg. 1

5710-5870 NW 41<sup>st</sup> Street, Riverside, Missouri

# For Lease

## Local Travel Times



4622 Pennsylvania Avenue, Suite 700  
Kansas City, MO 64112  
816.756.1400 | [www.BLOCKLLC.com](http://www.BLOCKLLC.com)

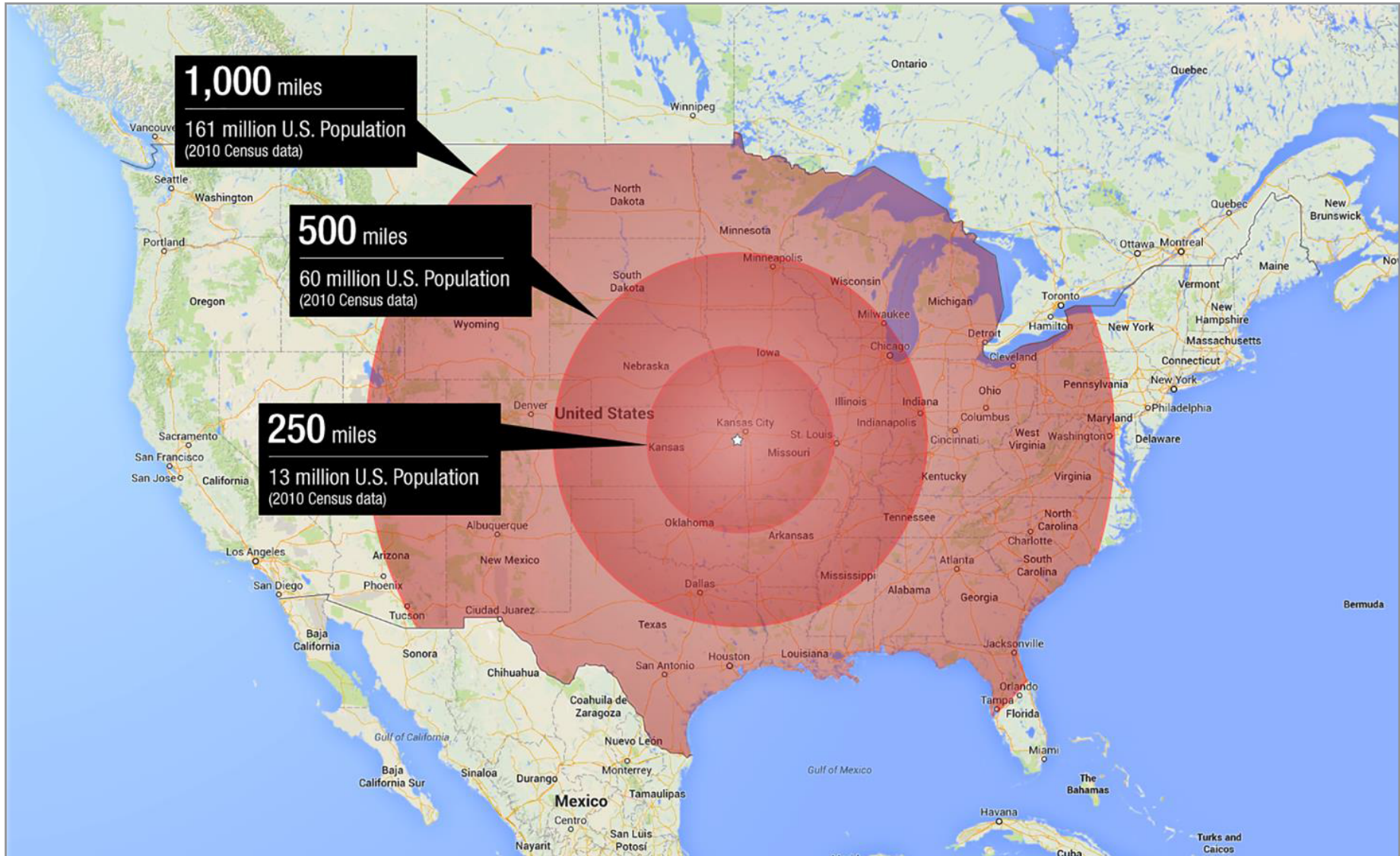
**BLOCK**  
REAL ESTATE SERVICES, LLC



# Riverside Logistics Centre - Bldg. 1

5710-5870 NW 41<sup>st</sup> Street, Riverside, Missouri

# For Lease

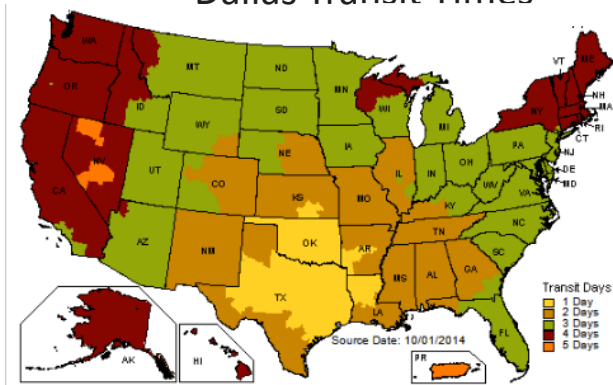


4622 Pennsylvania Avenue, Suite 700  
Kansas City, MO 64112  
816.756.1400 | [www.BLOCKLLC.com](http://www.BLOCKLLC.com)

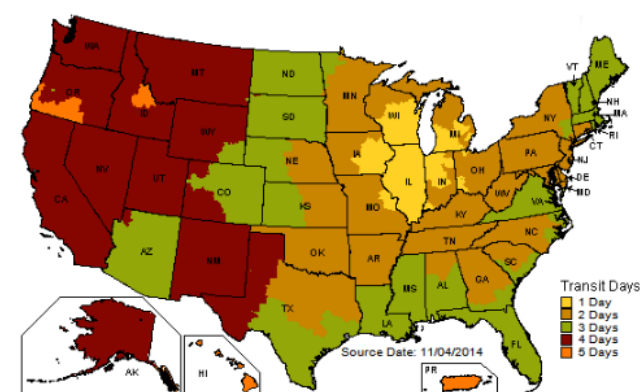
**BLOCK**  
REAL ESTATE SERVICES, LLC

## National Travel Times - UPS Study

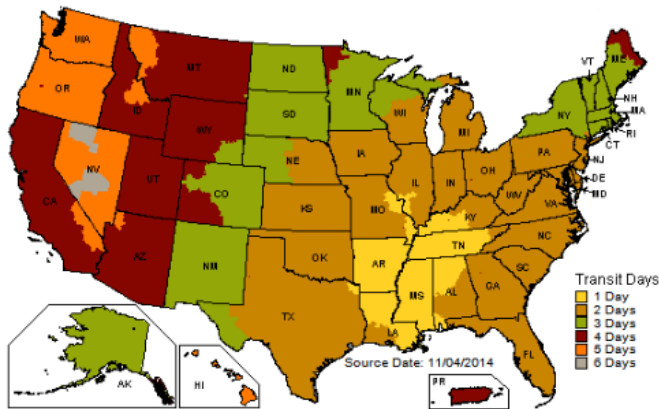
### Dallas Transit Times



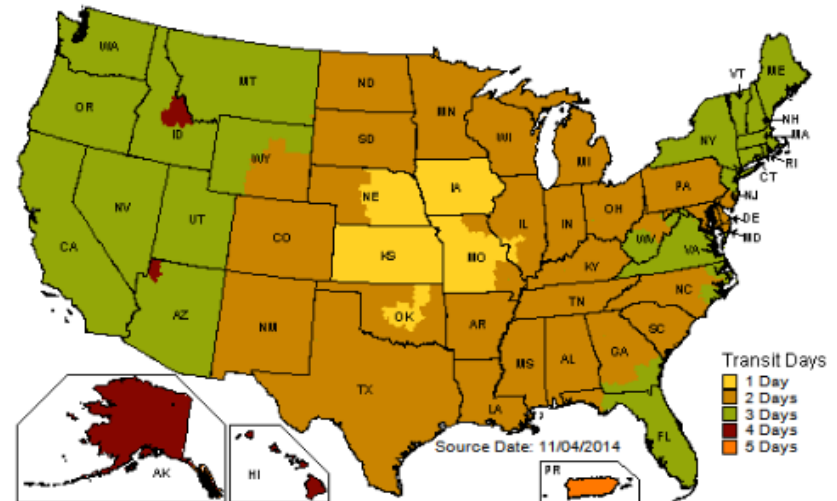
### Chicago Transit Times



### Memphis Transit Times



Kansas City Covers the Majority of U.S. in 3 Days of Less

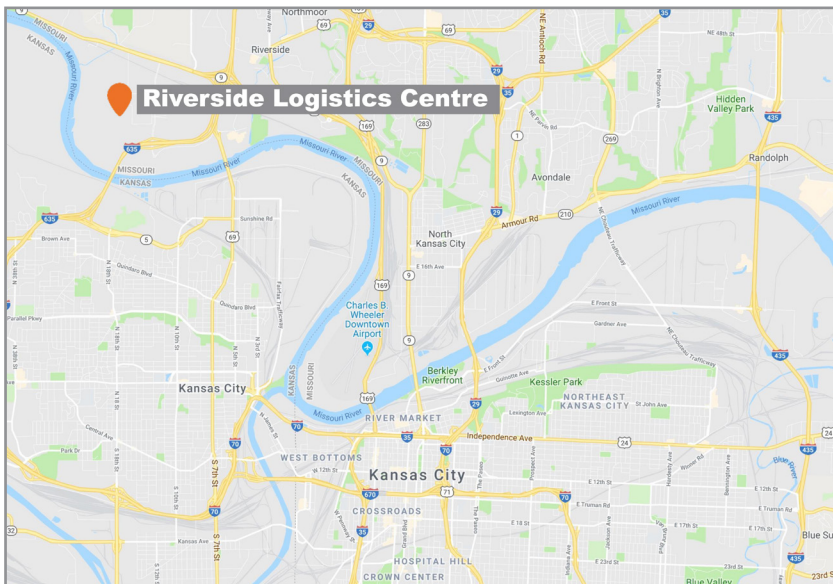




# Riverside Logistics Centre - Bldg. 1

5710-5870 NW 41<sup>st</sup> Street, Riverside, Missouri

# For Lease



For more information:

Zach Hubbard, SIOR  
816.932.5504  
zhubbard@blockllc.com

Kenneth G. Block, SIOR, CCIM  
816.932.5551  
kblock@blockllc.com

Michael R. Block, CPM  
816.932.5549  
mblock@blockllc.com

4622 Pennsylvania Avenue, Suite 700  
Kansas City, MO 64112  
816.756.1400 | [www.BLOCKLLC.com](http://www.BLOCKLLC.com)

**BLOCK**  
REAL ESTATE SERVICES, LLC