

**DO NOT DISTURB TENANT**



**High Traffic Location!**

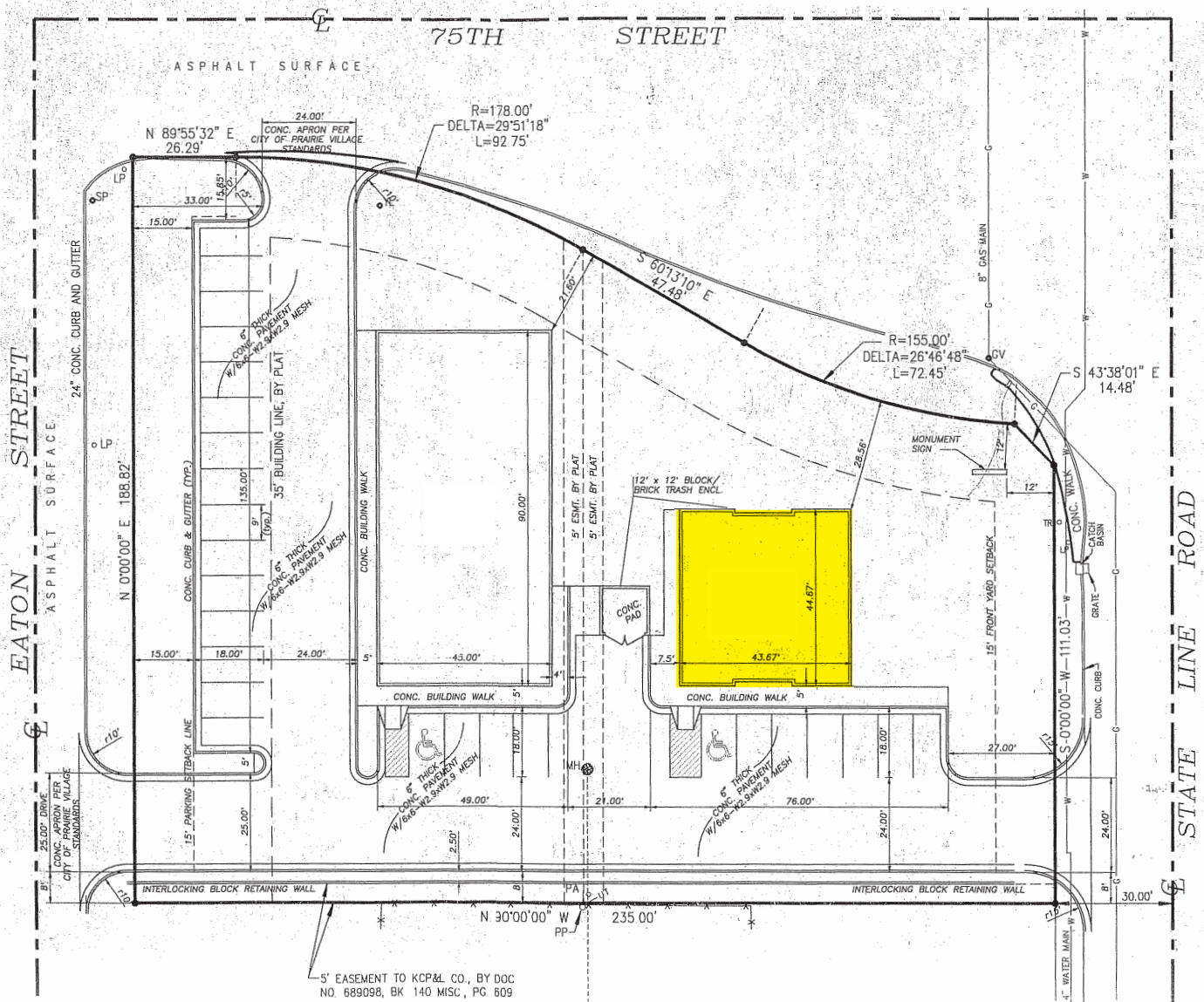
- Excellent Location at 75th & State Line Road in Prairie Village
- 2243 SF free standing building
- 26,300 cars per day
- Built in 1999, Zoned C1
- Excellent location for service oriented business

**For more information:**

Kim Bartalos, CLS  
816.412.8466  
kbartalos@blockllc.com

The information contained in this marketing flyer is presented as general information only. Block Real Estate Services, LLC. makes no representation as to its accuracy. This information is not intended as legal, financial or real estate advice and must not be relied upon as such. You should make your own inquiries, obtain independent inspections, and seek professional advice tailored to your specific circumstances before making any legal, financial or real estate decisions.

## Site Plan





## Demographics

7500 State Line Rd Prairie Village, KS 66208	1 mi radius		3 mi radius		5 mi radius		10 mi radius	
<b>Population</b>								
Estimated Population (2023)	12,141		97,901		251,899		804,831	
Projected Population (2028)	11,678		95,036		246,582		798,220	
Census Population (2020)	12,421		99,689		250,234		798,920	
Census Population (2010)	12,269		95,781		241,180		760,244	
Projected Annual Growth (2023-2028)	-463	-0.8%	-2,865	-0.6%	-5,317	-0.4%	-6,611	-0.2%
Historical Annual Growth (2020-2023)	-280	-0.8%	-1,788	-0.6%	1,665	0.2%	5,911	0.2%
Historical Annual Growth (2010-2020)	152	0.1%	3,907	0.4%	9,054	0.4%	38,676	0.5%
Estimated Population Density (2023)	3,867 <i>psm</i>		3,464 <i>psm</i>		3,208 <i>psm</i>		2,563 <i>psm</i>	
Trade Area Size	3.1 <i>sq mi</i>		28.3 <i>sq mi</i>		78.5 <i>sq mi</i>		314.0 <i>sq mi</i>	
<b>Households</b>								
Estimated Households (2023)	5,636		43,144		116,694		345,599	
Projected Households (2028)	5,366		41,497		113,432		342,267	
Census Households (2020)	5,792		44,128		115,850		340,589	
Census Households (2010)	5,732		42,642		111,137		317,976	
Projected Annual Growth (2023-2028)	-271	-1.0%	-1,647	-0.8%	-3,261	-0.6%	-3,331	-0.2%
Historical Annual Change (2010-2023)	-95	-0.1%	502	-	5,557	0.4%	27,622	0.7%
<b>Average Household Income</b>								
Estimated Average Household Income (2023)	\$194,106		\$167,054		\$127,775		\$114,922	
Projected Average Household Income (2028)	\$224,586		\$190,175		\$143,318		\$126,406	
Census Average Household Income (2010)	\$93,073		\$92,440		\$70,907		\$67,376	
Census Average Household Income (2000)	\$75,783		\$76,843		\$60,260		\$58,714	
Projected Annual Change (2023-2028)	\$30,480	3.1%	\$23,121	2.8%	\$15,543	2.4%	\$11,484	2.0%
Historical Annual Change (2000-2023)	\$118,324	6.8%	\$90,211	5.1%	\$67,516	4.9%	\$56,208	4.2%
<b>Median Household Income</b>								
Estimated Median Household Income (2023)	\$116,765		\$114,513		\$92,566		\$84,926	
Projected Median Household Income (2028)	\$119,685		\$116,077		\$93,262		\$85,974	
Census Median Household Income (2010)	\$79,435		\$71,295		\$55,493		\$54,092	
Census Median Household Income (2000)	\$62,873		\$60,869		\$47,738		\$47,881	
Projected Annual Change (2023-2028)	\$2,920	0.5%	\$1,564	0.3%	\$696	0.2%	\$1,048	0.2%
Historical Annual Change (2000-2023)	\$53,892	3.7%	\$53,644	3.8%	\$44,828	4.1%	\$37,046	3.4%
<b>Per Capita Income</b>								
Estimated Per Capita Income (2023)	\$90,244		\$73,697		\$59,345		\$49,513	
Projected Per Capita Income (2028)	\$103,325		\$83,120		\$66,084		\$54,368	
Census Per Capita Income (2010)	\$43,493		\$41,154		\$32,674		\$28,182	
Census Per Capita Income (2000)	\$35,360		\$33,246		\$27,169		\$24,081	
Projected Annual Change (2023-2028)	\$13,080	2.9%	\$9,423	2.6%	\$6,740	2.3%	\$4,855	2.0%
Historical Annual Change (2000-2023)	\$54,884	6.7%	\$40,451	5.3%	\$32,176	5.1%	\$25,433	4.6%
Estimated Average Household Net Worth (2023)	\$753,610		\$740,599		\$567,084		\$501,803	

©2024, Sites USA, Chandler, Arizona, 480-491-1112 Demographic Source: Applied Geographic Solutions 11/2023, TIGER Geography - RFULL9

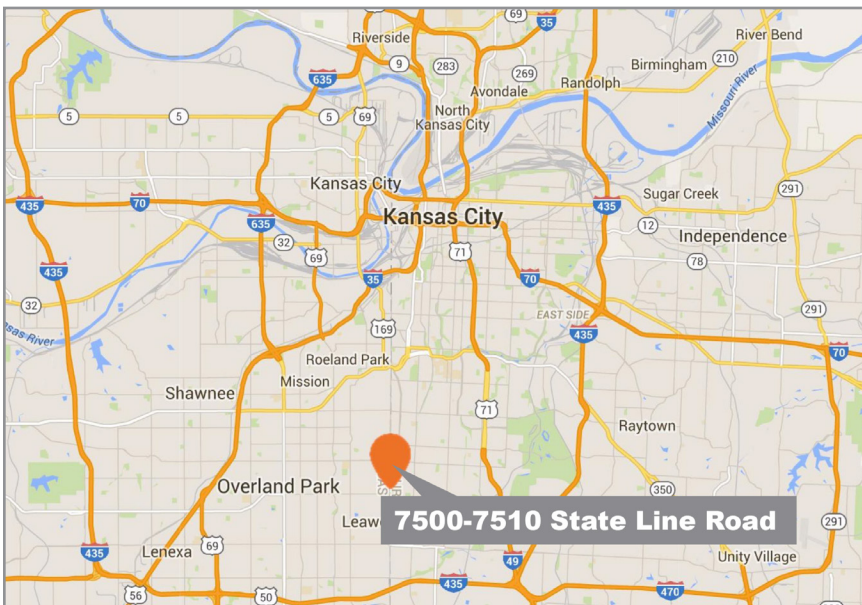
7500-7510 State Line.indd



# 7500-7510 State Line Road

Prairie Village, Kansas 66208

# For Lease



For more information:

Kim Bartalos, CLS  
816.412.8466  
kbartalos@blockllc.com