

DO NOT DISTURB TENANT



High Traffic Location!

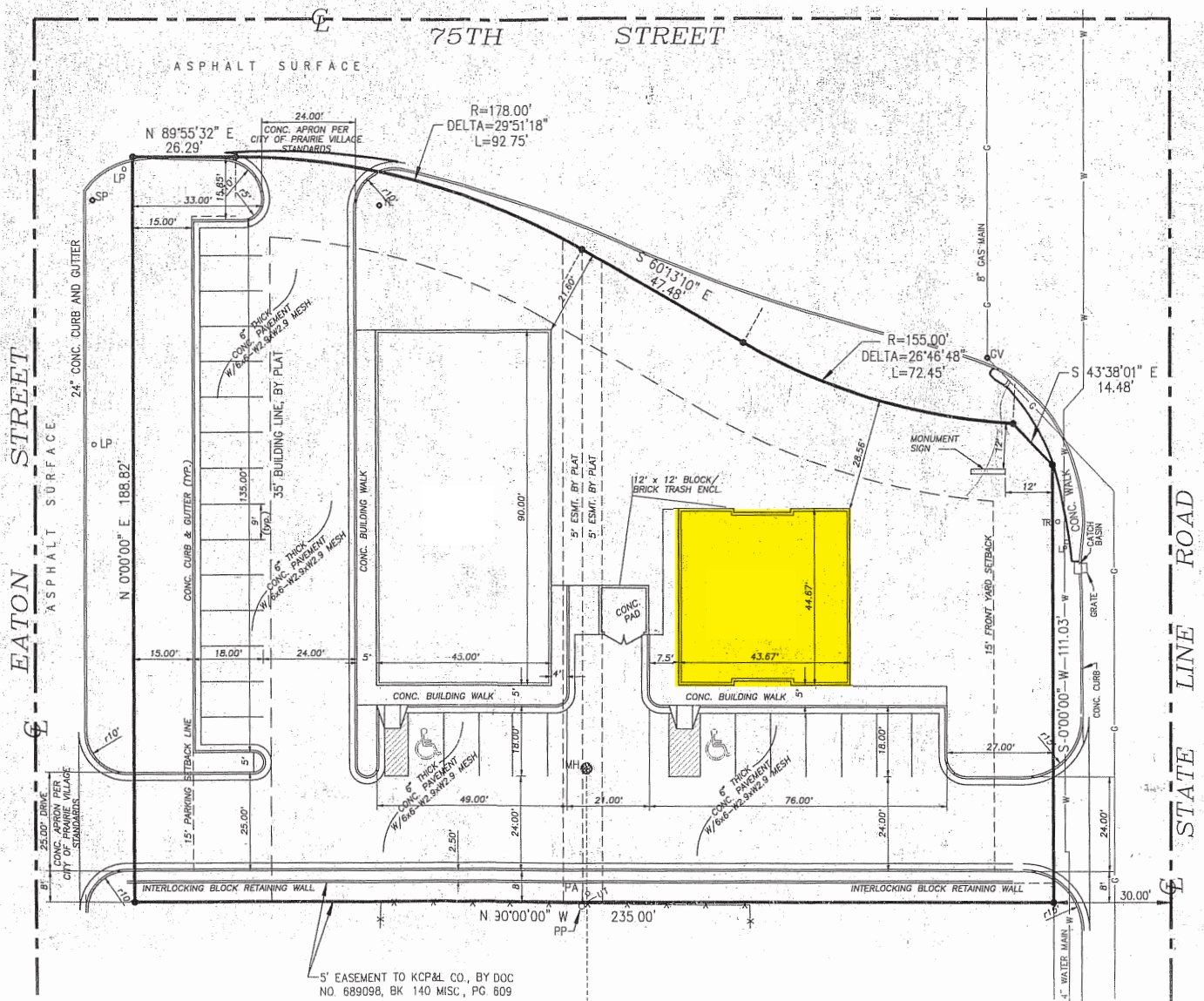
- Excellent Location at 75th & State Line Road in Prairie Village
- 2,243 SF free standing building
- 26,300 cars per day
- Built in 1999, Zoned C1
- Excellent location for service oriented business

For more information:

Kim Bartalos, CLS
816.412.8466
kbartalos@blockllc.com

The information contained in this marketing flyer is presented as general information only. Block Real Estate Services, LLC. makes no representation as to its accuracy. This information is not intended as legal, financial or real estate advice and must not be relied upon as such. You should make your own inquiries, obtain independent inspections, and seek professional advice tailored to your specific circumstances before making any legal, financial or real estate decisions.

Site Plan



Demographics

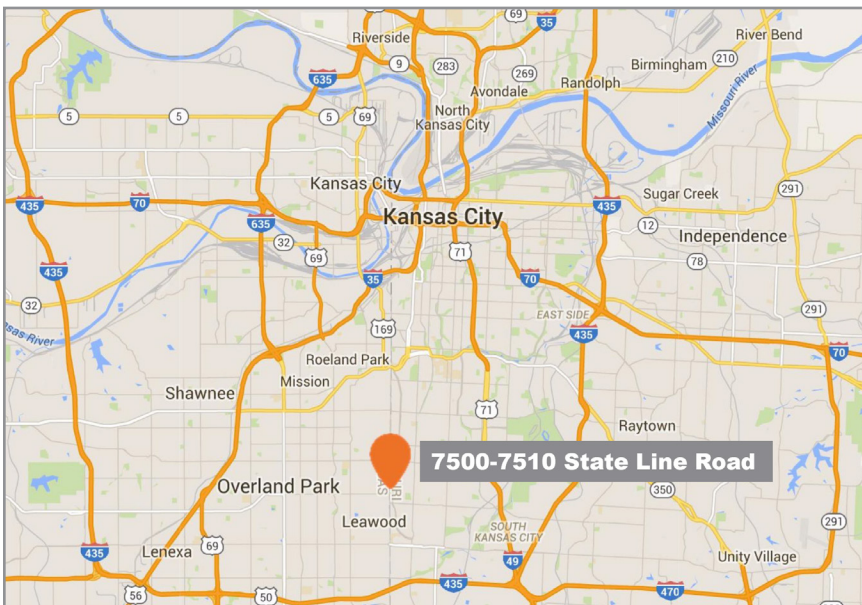
| 7500 State Line Rd Prairie Village, KS 66208 | 1 mi radius | | 3 mi radius | | 5 mi radius | | 10 mi radius | |
|---|------------------|-------|-------------------|-------|-------------------|-------|--------------------|-------|
| Population | | | | | | | | |
| Estimated Population (2023) | 12,141 | | 97,901 | | 251,899 | | 804,831 | |
| Projected Population (2028) | 11,678 | | 95,036 | | 246,582 | | 798,220 | |
| Census Population (2020) | 12,421 | | 99,689 | | 250,234 | | 798,920 | |
| Census Population (2010) | 12,269 | | 95,781 | | 241,180 | | 760,244 | |
| Projected Annual Growth (2023-2028) | -463 | -0.8% | -2,865 | -0.6% | -5,317 | -0.4% | -6,611 | -0.2% |
| Historical Annual Growth (2020-2023) | -280 | -0.8% | -1,788 | -0.6% | 1,665 | 0.2% | 5,911 | 0.2% |
| Historical Annual Growth (2010-2020) | 152 | 0.1% | 3,907 | 0.4% | 9,054 | 0.4% | 38,676 | 0.5% |
| Estimated Population Density (2023) | 3,867 <i>psm</i> | | 3,464 <i>psm</i> | | 3,208 <i>psm</i> | | 2,563 <i>psm</i> | |
| Trade Area Size | 3.1 <i>sq mi</i> | | 28.3 <i>sq mi</i> | | 78.5 <i>sq mi</i> | | 314.0 <i>sq mi</i> | |
| Households | | | | | | | | |
| Estimated Households (2023) | 5,636 | | 43,144 | | 116,694 | | 345,599 | |
| Projected Households (2028) | 5,366 | | 41,497 | | 113,432 | | 342,267 | |
| Census Households (2020) | 5,792 | | 44,128 | | 115,850 | | 340,589 | |
| Census Households (2010) | 5,732 | | 42,642 | | 111,137 | | 317,976 | |
| Projected Annual Growth (2023-2028) | -271 | -1.0% | -1,647 | -0.8% | -3,261 | -0.6% | -3,331 | -0.2% |
| Historical Annual Change (2010-2023) | -95 | -0.1% | 502 | - | 5,557 | 0.4% | 27,622 | 0.7% |
| Average Household Income | | | | | | | | |
| Estimated Average Household Income (2023) | \$194,106 | | \$167,054 | | \$127,775 | | \$114,922 | |
| Projected Average Household Income (2028) | \$224,586 | | \$190,175 | | \$143,318 | | \$126,406 | |
| Census Average Household Income (2010) | \$93,073 | | \$92,440 | | \$70,907 | | \$67,376 | |
| Census Average Household Income (2000) | \$75,783 | | \$76,843 | | \$60,260 | | \$58,714 | |
| Projected Annual Change (2023-2028) | \$30,480 | 3.1% | \$23,121 | 2.8% | \$15,543 | 2.4% | \$11,484 | 2.0% |
| Historical Annual Change (2000-2023) | \$118,324 | 6.8% | \$90,211 | 5.1% | \$67,516 | 4.9% | \$56,208 | 4.2% |
| Median Household Income | | | | | | | | |
| Estimated Median Household Income (2023) | \$116,765 | | \$114,513 | | \$92,566 | | \$84,926 | |
| Projected Median Household Income (2028) | \$119,685 | | \$116,077 | | \$93,262 | | \$85,974 | |
| Census Median Household Income (2010) | \$79,435 | | \$71,295 | | \$55,493 | | \$54,092 | |
| Census Median Household Income (2000) | \$62,873 | | \$60,869 | | \$47,738 | | \$47,881 | |
| Projected Annual Change (2023-2028) | \$2,920 | 0.5% | \$1,564 | 0.3% | \$696 | 0.2% | \$1,048 | 0.2% |
| Historical Annual Change (2000-2023) | \$53,892 | 3.7% | \$53,644 | 3.8% | \$44,828 | 4.1% | \$37,046 | 3.4% |
| Per Capita Income | | | | | | | | |
| Estimated Per Capita Income (2023) | \$90,244 | | \$73,697 | | \$59,345 | | \$49,513 | |
| Projected Per Capita Income (2028) | \$103,325 | | \$83,120 | | \$66,084 | | \$54,368 | |
| Census Per Capita Income (2010) | \$43,493 | | \$41,154 | | \$32,674 | | \$28,182 | |
| Census Per Capita Income (2000) | \$35,360 | | \$33,246 | | \$27,169 | | \$24,081 | |
| Projected Annual Change (2023-2028) | \$13,080 | 2.9% | \$9,423 | 2.6% | \$6,740 | 2.3% | \$4,855 | 2.0% |
| Historical Annual Change (2000-2023) | \$54,884 | 6.7% | \$40,451 | 5.3% | \$32,176 | 5.1% | \$25,433 | 4.6% |
| Estimated Average Household Net Worth (2023) | \$753,610 | | \$740,599 | | \$567,084 | | \$501,803 | |

©2024, Sites USA, Chandler, Arizona, 480-491-1112 Demographic Source: Applied Geographic Solutions 11/2023, TIGER Geography - RFULL9

7500-7510 State Line Road

Prairie Village, Kansas 66208

For Lease



For more information:

Kim Bartalos, CLS
816.412.8466
kbartalos@blockllc.com

4622 Pennsylvania Avenue, Suite 700
Kansas City, MO 64112
816.756.1400 | www.BLOCKLLC.com

BLOCK
REAL ESTATE SERVICES, LLC