



## Development Site

- Approximately 0.72 acres
- Good highway access
- Nearly 14K cars per day
- Relatively flat parcel
- Zoned B3-2 and R-1.5
- Billboard income

For more information:

Kim Bartalos  
816.412.8466  
kbartalos@blockllc.com

The information contained in this marketing flyer is presented as general information only. Block Real Estate Services, LLC makes no representation as to its accuracy. This information is not intended as legal, financial or real estate advice and must not be relied upon as such. You should make your own inquiries, obtain independent inspections, and seek professional advice tailored to your specific circumstances before making any legal, financial or real estate decisions.

## Demographics

### Summary Profile

2010-2020 Census, 2021 Estimates with 2026 Projections  
 Calculated using Weighted Block Centroid from Block Groups



Lat/Lon: 39.1023/-94.5523

2419 E 9th St KCMO, MO 64124	1 mi radius	3 mi radius	5 mi radius
<b>Population</b>			
2021 Estimated Population	15,456	90,812	199,452
2026 Projected Population	15,665	95,170	206,768
2020 Census Population	15,411	91,179	199,206
2010 Census Population	16,310	83,610	186,908
Projected Annual Growth 2021 to 2026	0.3%	1.0%	0.7%
Historical Annual Growth 2010 to 2021	-0.5%	0.8%	0.6%
2021 Median Age	31.4	32.4	33.7
<b>Households</b>			
2021 Estimated Households	5,705	39,201	87,880
2026 Projected Households	5,851	42,486	92,163
2020 Census Households	5,698	39,435	87,629
2010 Census Households	5,938	33,234	79,637
Projected Annual Growth 2021 to 2026	0.5%	1.7%	1.0%
Historical Annual Growth 2010 to 2021	-0.4%	1.6%	0.9%
<b>Race and Ethnicity</b>			
2021 Estimated White	21.4%	29.2%	38.0%
2021 Estimated Black or African American	40.3%	34.6%	30.2%
2021 Estimated Asian or Pacific Islander	5.5%	4.9%	5.2%
2021 Estimated American Indian or Native Alaskan	1.2%	1.1%	1.0%
2021 Estimated Other Races	31.5%	30.2%	25.7%
2021 Estimated Hispanic	31.9%	31.3%	26.7%
<b>Income</b>			
2021 Estimated Average Household Income	\$44,879	\$53,262	\$59,426
2021 Estimated Median Household Income	\$27,440	\$41,304	\$45,323
2021 Estimated Per Capita Income	\$16,959	\$23,403	\$26,567
<b>Education (Age 25+)</b>			
2021 Estimated Elementary (Grade Level 0 to 8)	12.6%	9.2%	7.3%
2021 Estimated Some High School (Grade Level 9 to 11)	13.9%	12.0%	9.9%
2021 Estimated High School Graduate	33.2%	28.3%	28.7%
2021 Estimated Some College	18.3%	18.5%	19.4%
2021 Estimated Associates Degree Only	7.3%	6.2%	6.1%
2021 Estimated Bachelors Degree Only	9.4%	15.6%	17.5%
2021 Estimated Graduate Degree	5.3%	10.2%	11.1%
<b>Business</b>			
2021 Estimated Total Businesses	581	6,422	12,287
2021 Estimated Total Employees	8,295	115,521	221,282
2021 Estimated Employee Population per Business	14.3	18.0	18.0
2021 Estimated Residential Population per Business	26.6	14.1	16.2

©2022, State USA, Chandler, Arizona, 480-491-1112 Demographic Source: Applied Geographic Solutions 11/2021, TIGER Geography - RS1

This report was produced using data from private and government sources deemed to be reliable. The information herein is provided without representation or warranty.

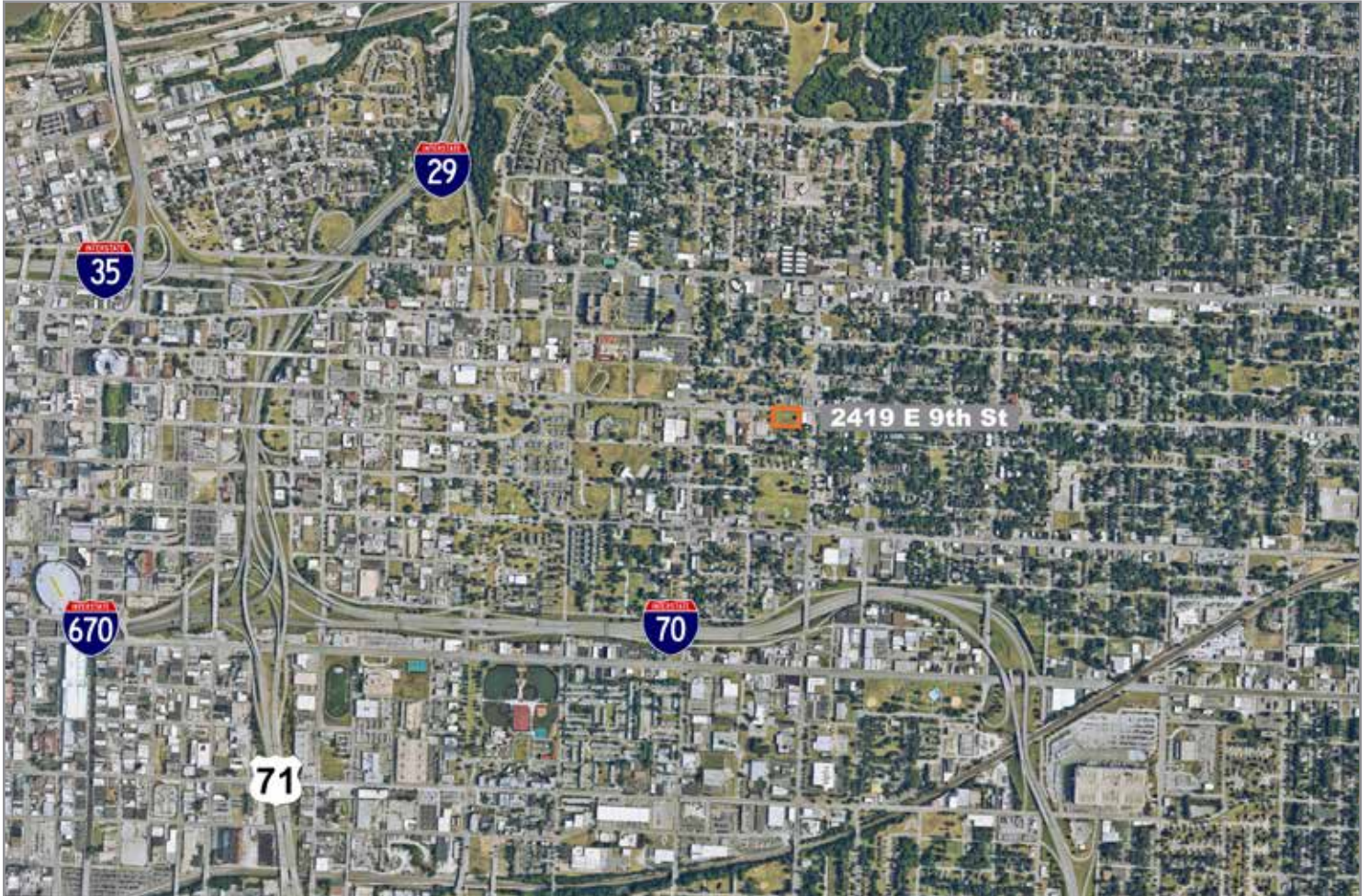
page 1 of 1



# 2419 E 9th St

2419 E 9th St, Kansas City, Missouri 64124

# For Sale



For more information:

Kim Bartalos  
816.484.8466  
kbartalos@blockllc.com

4622 Pennsylvania Ave., Suite 700  
Kansas City, MO 64112  
816.756.1400 | www.BLOCKLLC.com

**BLOCK**  
REAL ESTATE SERVICES, LLC