

# 5200 Raytown Road

Kansas City, Missouri, 64133

# For Sale



## Excellent Location

- Great location near Truman Sports Complex, home of the Chiefs and Royals.
- Close proximity to Downtown Raytown
- 1.49± acre lot including a 644± SF building

## For more information:

Christian Wead

816.412.8472

[cwead@blockllc.com](mailto:cwead@blockllc.com)

Michael R. Block, CPM

816.932.5549

[mblock@blockllc.com](mailto:mblock@blockllc.com)

The information contained in this marketing flyer is presented as general information only. Block Real Estate Services, LLC makes no representation as to its accuracy.

This information is not intended as legal, financial or real estate advice and must not be relied upon as such. You should make your own inquiries, obtain independent inspections, and seek professional advice tailored to your specific circumstances before making any legal, financial or real estate decisions.

## Building Specifications

Lot Size:	64,690 SF or 1.485 acres
Building Size:	644± SF
Zoning:	B1-1
Parcel:	32-810-04-11-00-0-00-000
Legal Description:	HAWKINS RESURVEY LOTS 14 THRU 16 & 18
Last Use:	Restaurant

### For more information:

Michael R. Block, CPM  
816.932.5549  
mblock@blockllc.com

Christian Wead  
816.412.8472  
cwead@blockllc.com



# 5200 Raytown Road

Kansas City, Missouri, 64133

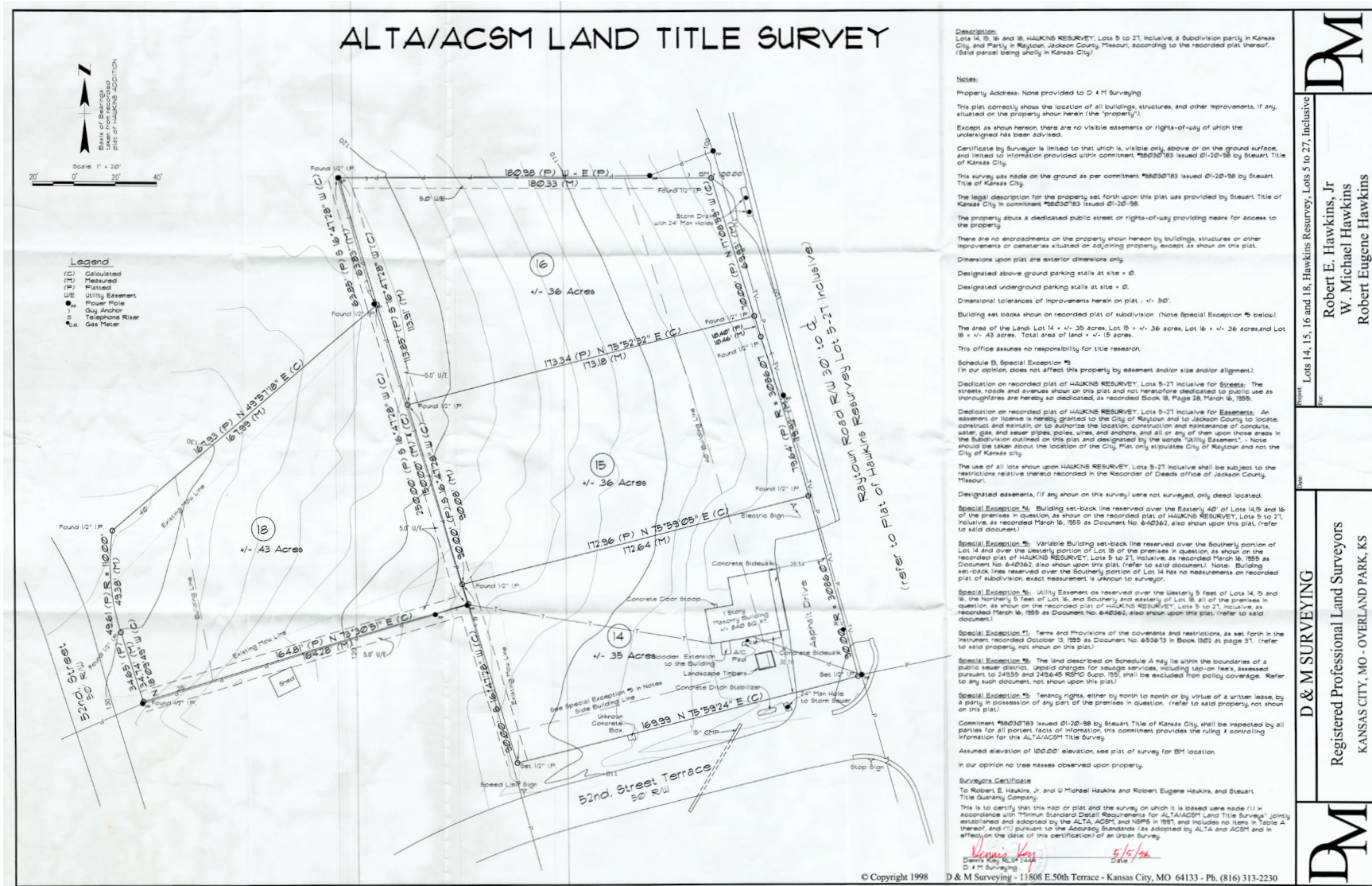
# For Sale



4622 Pennsylvania Ave., Suite 700  
Kansas City, MO 64112  
816.756.1400 | [www.BLOCKLLC.com](http://www.BLOCKLLC.com)

**BLOCK**  
REAL ESTATE SERVICES, LLC







# 5200 Raytown Road

Kansas City, Missouri, 64133

# For Sale



4622 Pennsylvania Ave., Suite 700  
Kansas City, MO 64112  
816.756.1400 | [www.BLOCKLLC.com](http://www.BLOCKLLC.com)

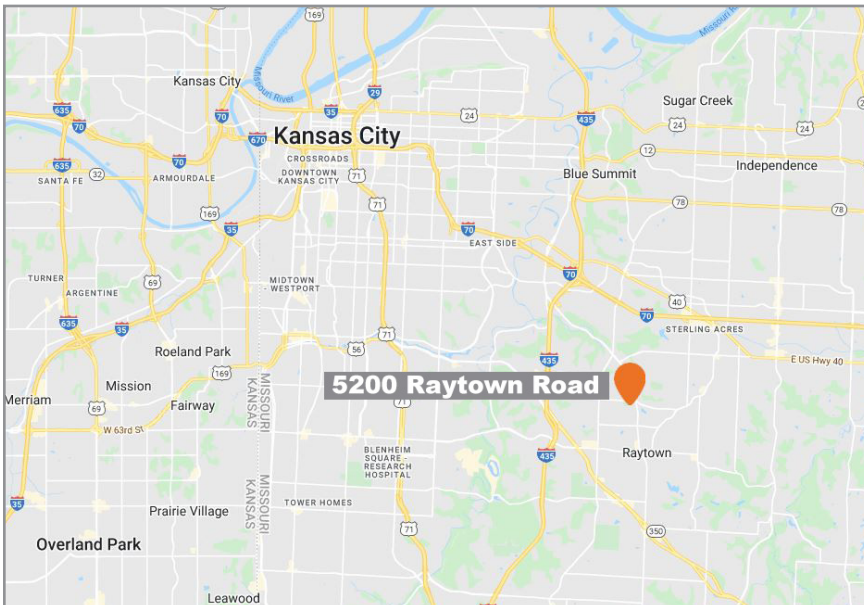
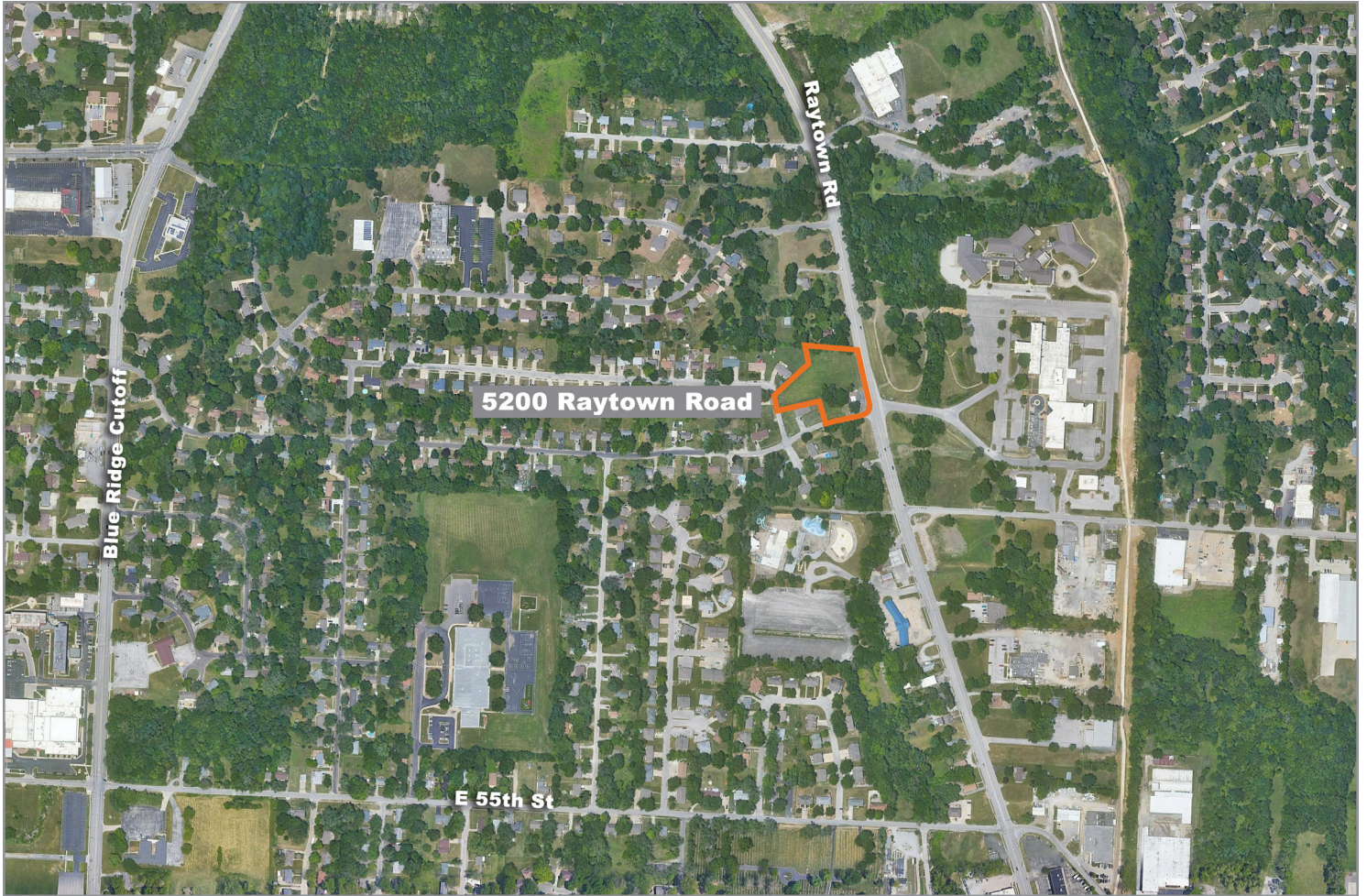
**BLOCK**  
REAL ESTATE SERVICES, LLC



# 5200 Raytown Road

Kansas City, Missouri, 64133

# For Sale



For more information:

Christian Wead

816.412.8472

[cwead@blockllc.com](mailto:cwead@blockllc.com)

Michael R. Block, CPM

816.932.5549

[mblock@blockllc.com](mailto:mblock@blockllc.com)