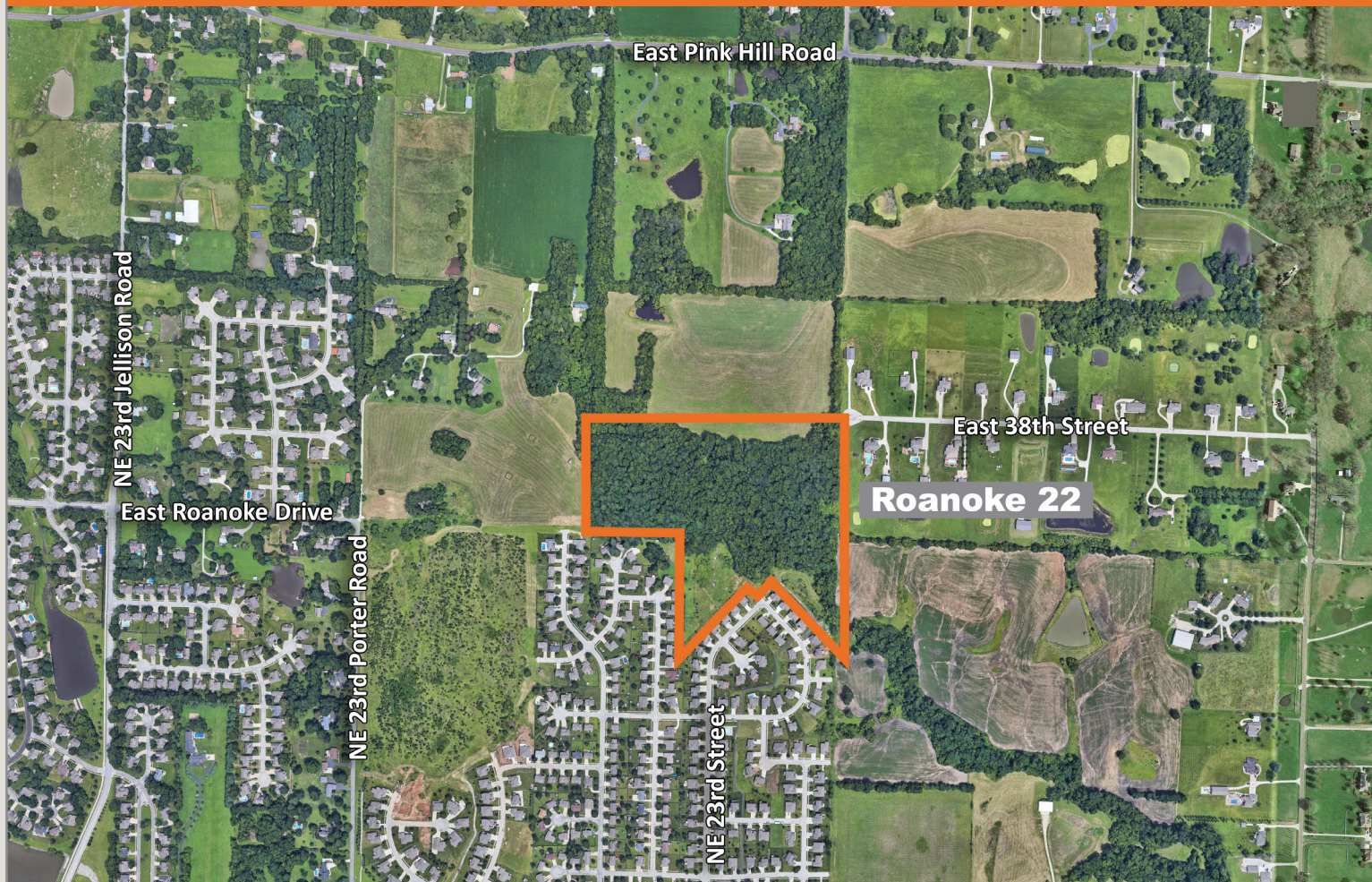


Land Available for Single-Family Home Development



Single Family Development Land For Sale

- 21.69 Acres attractively priced at \$1,250,000, or \$1.32 per square foot.
- Plan supports up to 52 Single Family lots.
- Home values range from \$470,000 to \$550,000 in the adjoining Four Pillars subdivision.
- Highly desirable Grain Valley school district.
- Easy access to Walmart, Target, Home Depot and other retail and restaurants at NE Adams Dairy Parkway and I-70.

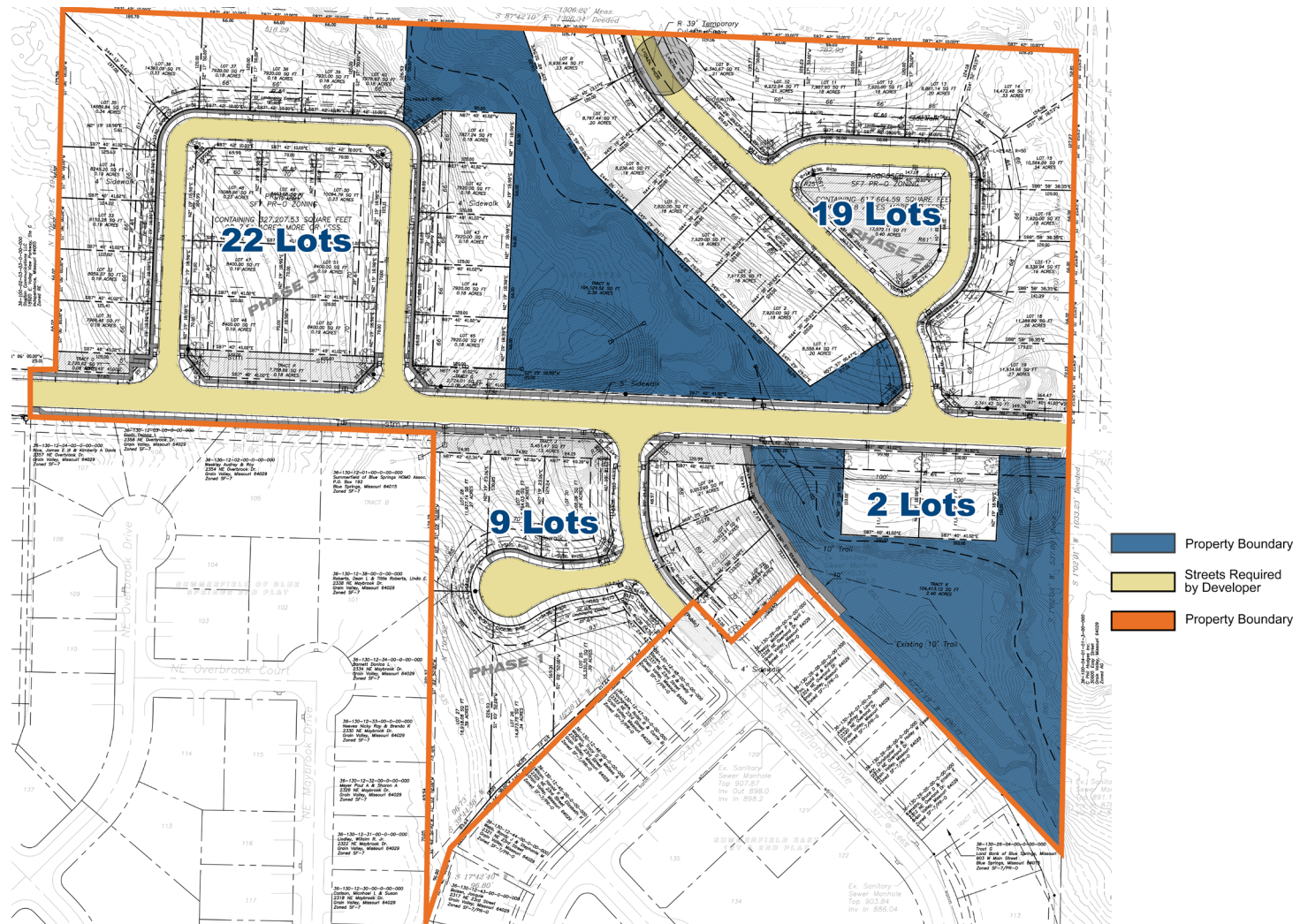
For more information:

Christel Highland
816.410.9584
chighland@blockllc.com

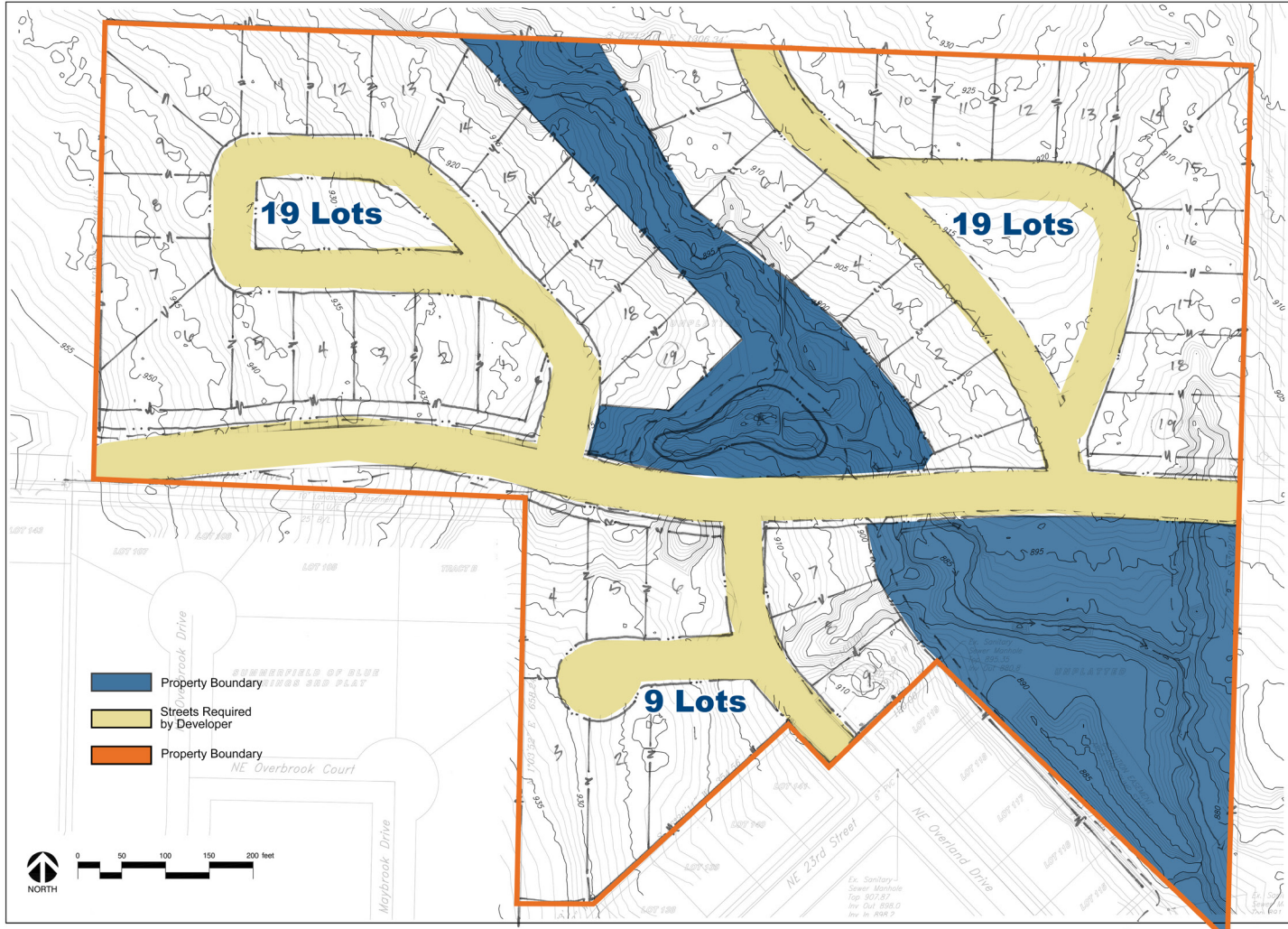
Aaron M. Mesmer, CCIM
816.412.5858
amesmer@blockllc.com

The information contained in this marketing flyer is presented as general information only. Block Real Estate Services, LLC makes no representation as to its accuracy. This information is not intended as legal, financial or real estate advice and must not be relied upon as such. You should make your own inquiries, obtain independent inspections, and seek professional advice tailored to your specific circumstances before making any legal, financial or real estate decisions.

Sample Concept Plan



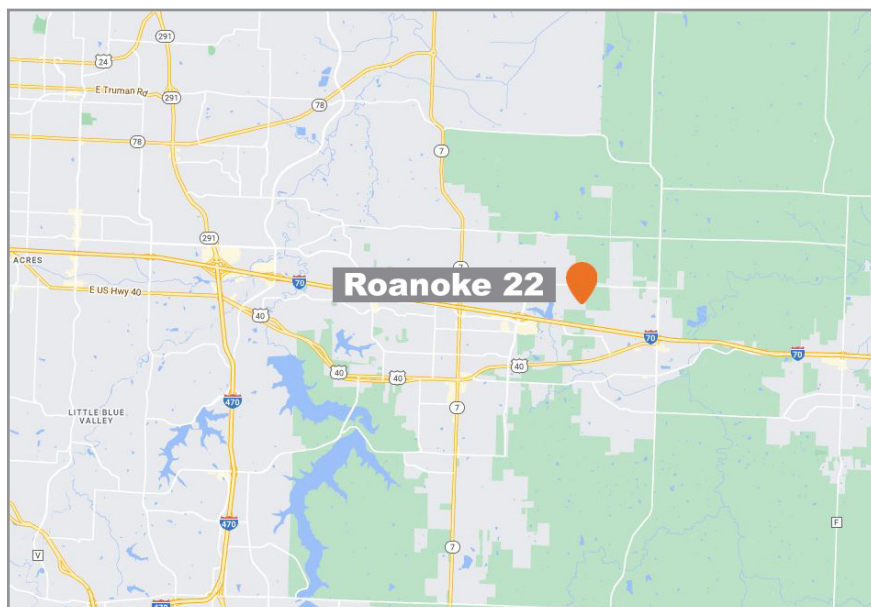
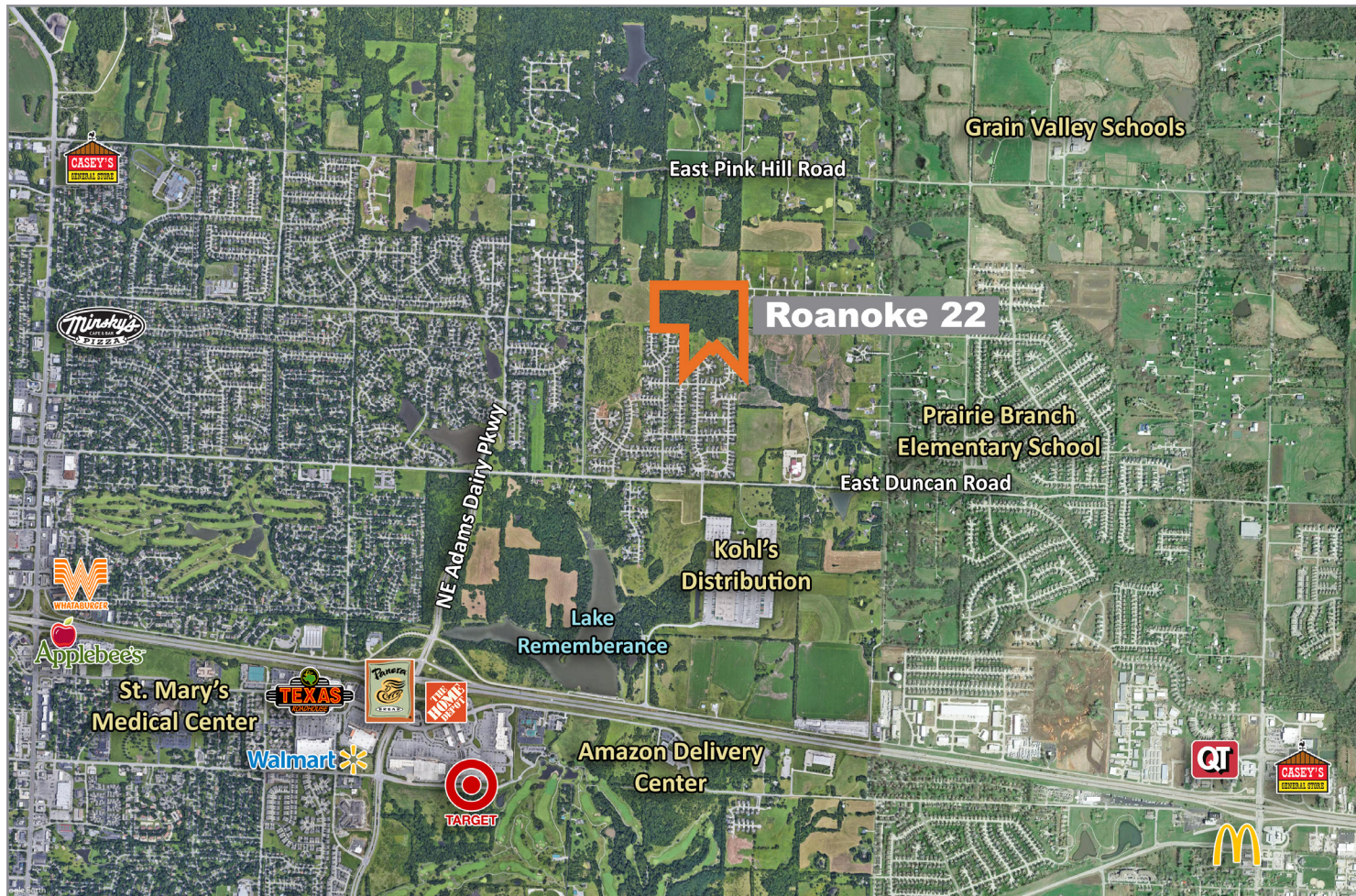
Sample Concept Plan



Roanoke 22

Blue Springs, Missouri 64029

For Sale



For more information:

Christel Highland
816.410.9584
chighland@blockllc.com

Aaron M. Mesmer, CCIM
816.412.5858
amesmer@blockllc.com