

Proposal Deadline: May 15th



Adaptive Reuse Opportunity

- Tour: Monday, April 13th at 10:00 AM
- Meservey Elementary School - Closed 2009
- 64,900 SF Building on a large 3.8 acre site
- 71, I-70, and I-435, Highways nearby
- Incredible adaptive reuse opportunity on a large parcel.
- Proximate to Brookside, Country Club Plaza, several green spaces, Arrowhead Stadium, UMKC, Rockhurst University, The Nelson-Atkins Museum of Art, Kemper Museum of Contemporary Art, and more.

The information contained in this marketing flyer is presented as general information only. Block Real Estate Services, LLC makes no representation as to its accuracy. This information is not intended as legal, financial or real estate advice and must not be relied upon as such. You should make your own inquiries, obtain independent inspections, and seek professional advice tailored to your specific circumstances before making any legal, financial or real estate decisions.

For more information:

Christel Highland
816.410.9584
chighland@blockllc.com

Aaron M. Mesmer, CCIM
816.412.5858
amesmer@blockllc.com

Building Specifications

Square Feet Available: 64,900 SF

Acreage: 3.8±

Property Type: Adaptive reuse, and infill opportunity.

Year Built: 1928, 1934, 1956

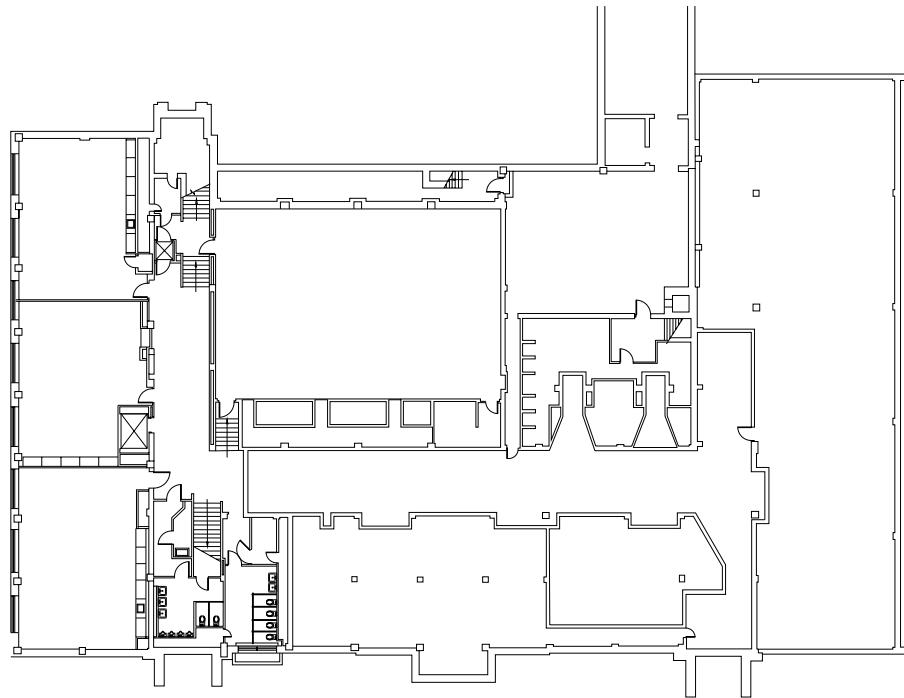
Year Closed: 2009

Zoning: R-2.5

Neighborhood: Vineyard

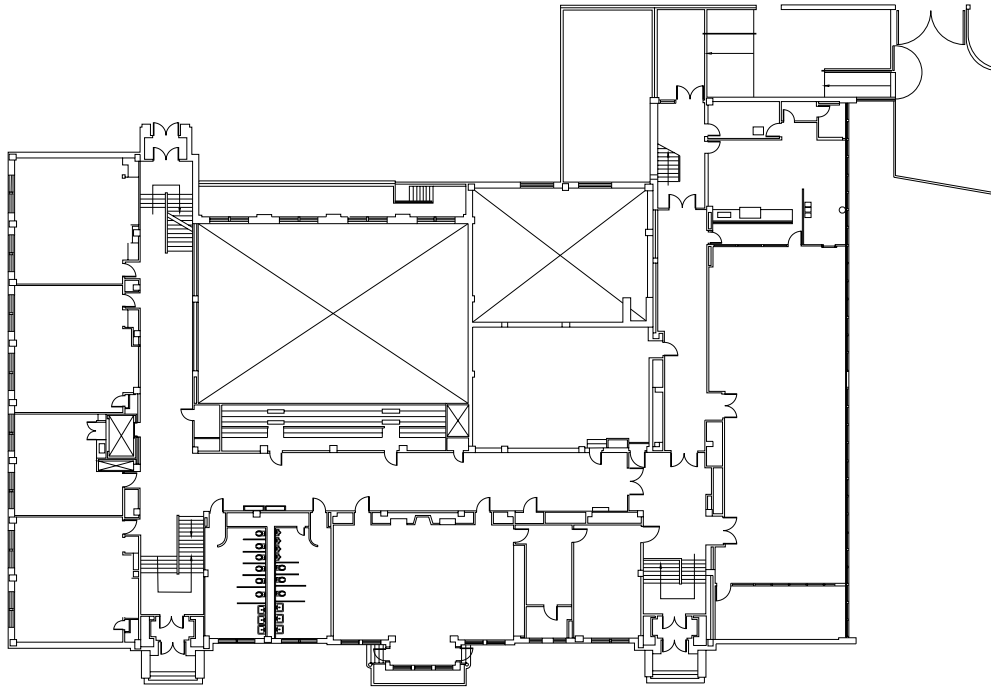
Number of Floors: 4

Special Features: Historical designation eligible, auditorium, gymnasium, cafeteria, and elevator.

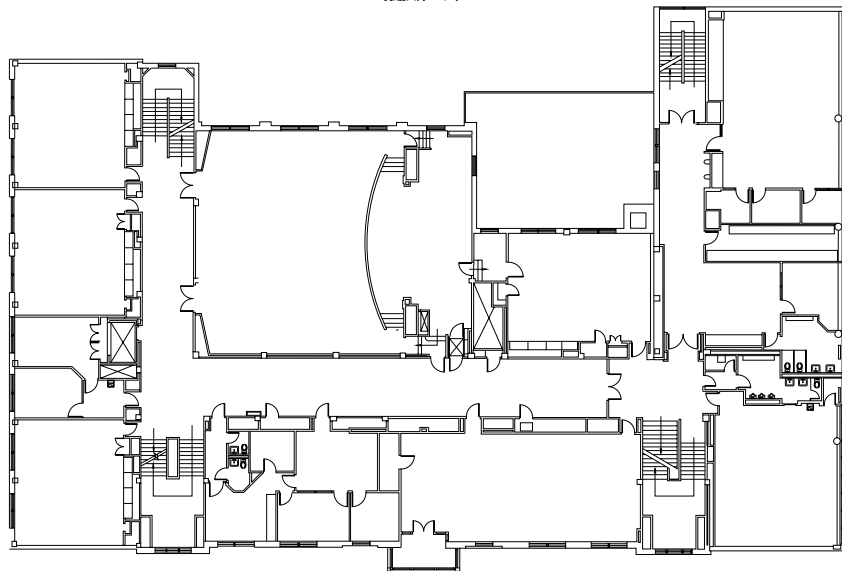


GROUND FLOOR PLAN
SCALE: 1/8" = 1'-0"

1st & 2nd Floor Plans

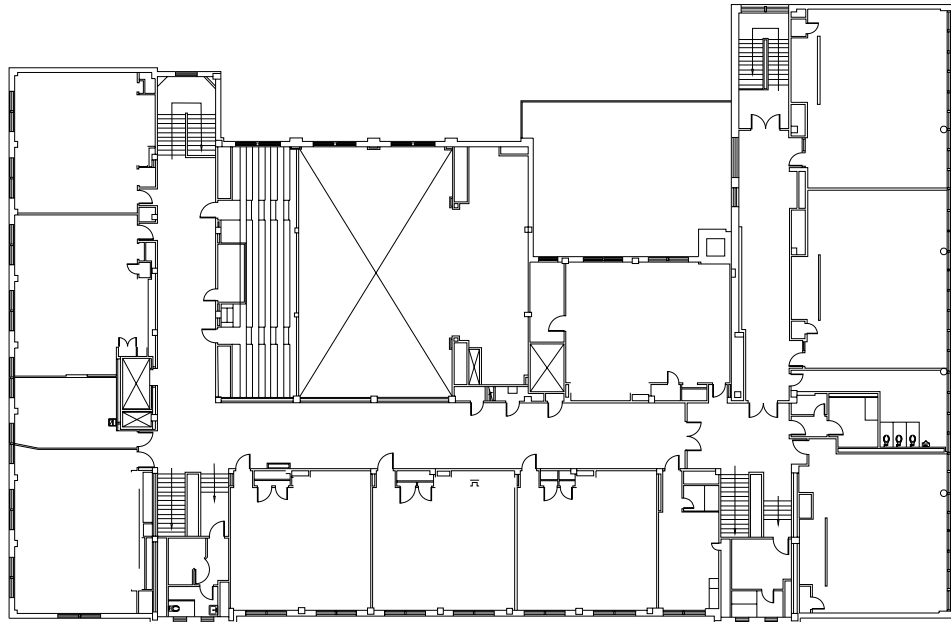




① FIRST FLOOR PLAN
SCALE: 1/8" = 1'-0"

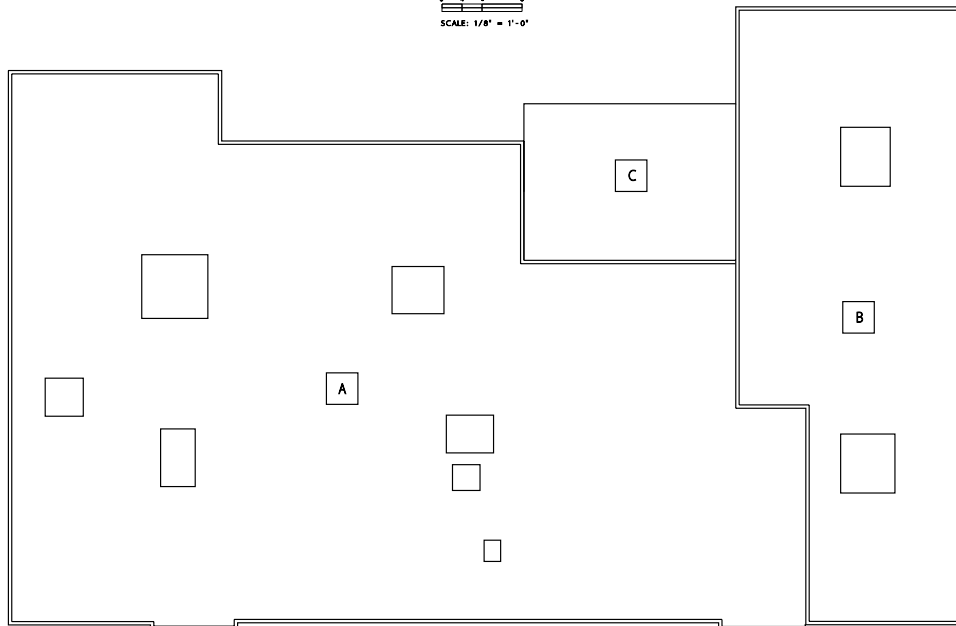



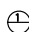
② SECOND FLOOR PLAN
SCALE: 1/8" = 1'-0"

3rd Floor Plan & Roof Plan



  **THIRD FLOOR PLAN**
SCALE: 1/8" = 1'-0"



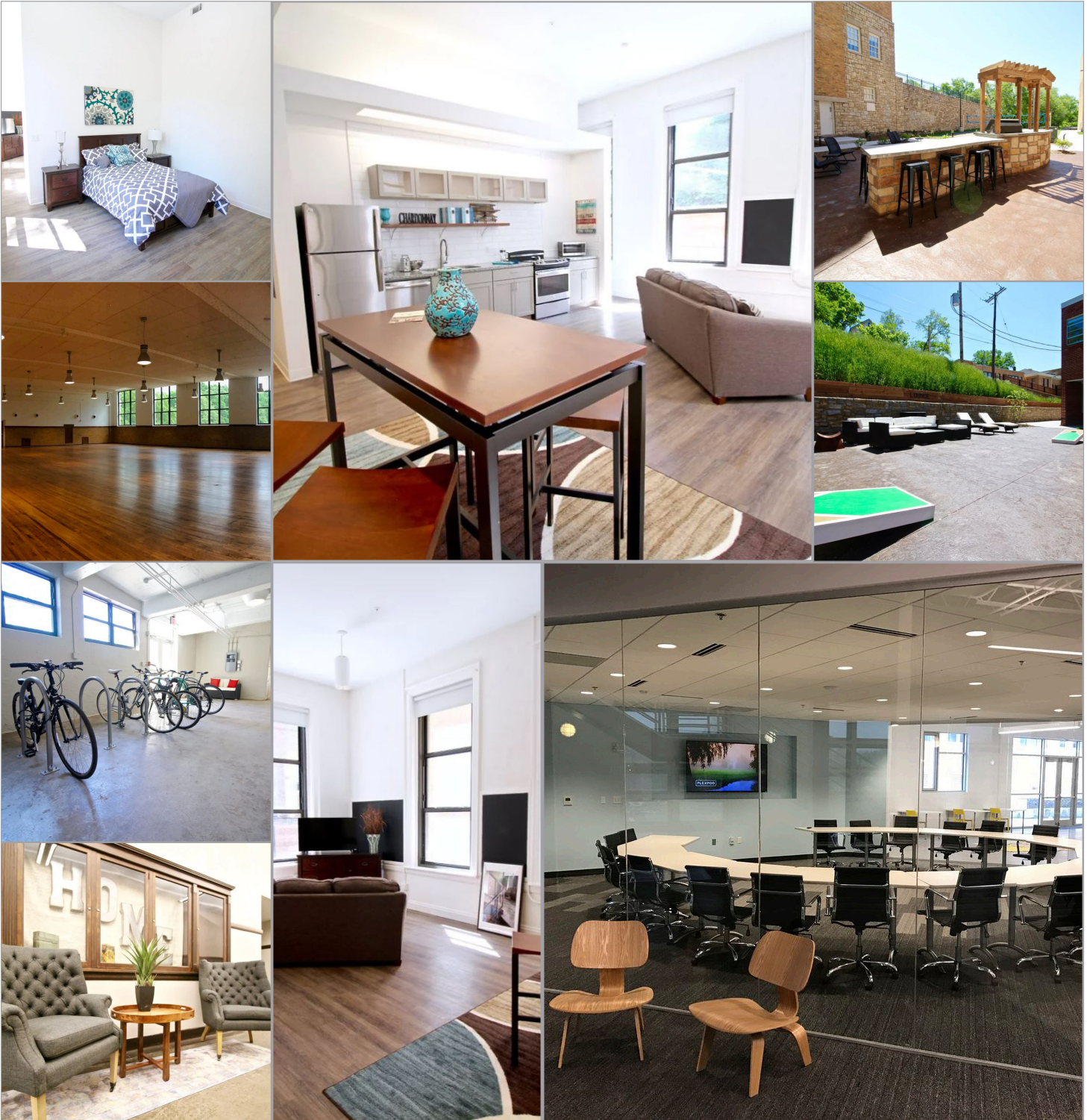
  **ROOF PLAN**
SCALE: 1/8" = 1'-0"

Meservey - Kansas City Public Schools

4210 East 45th Street, Kansas City, MO 64130

For Sale

Completed repurposing projects

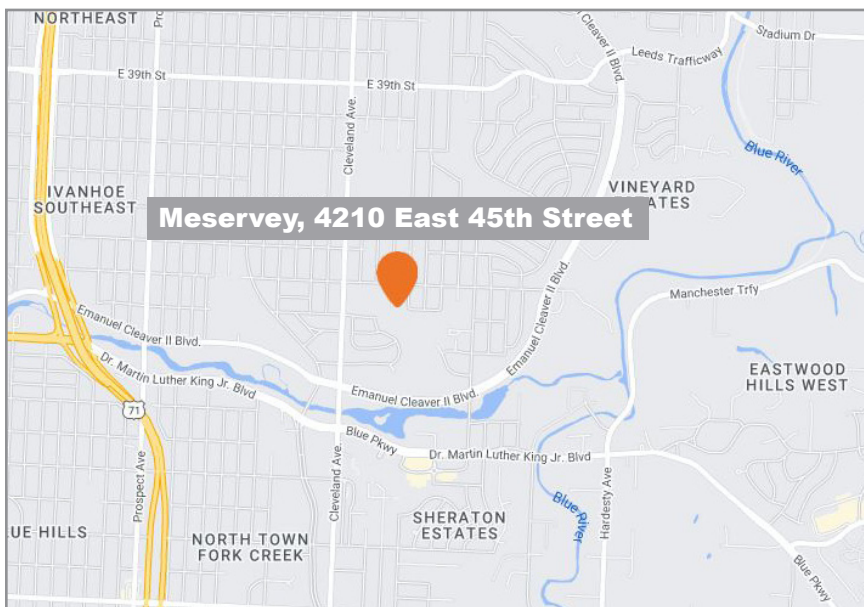
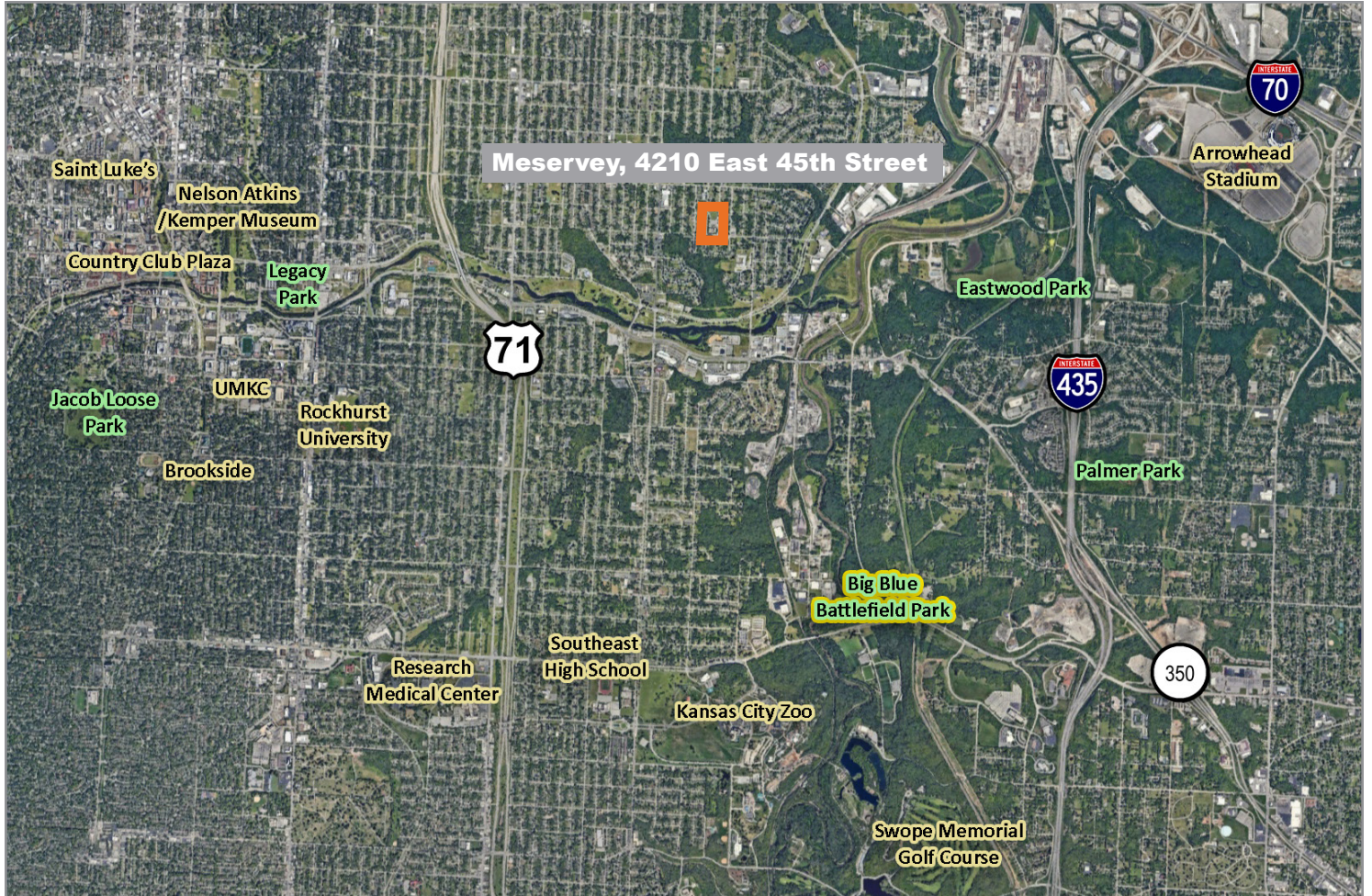


Images are a courtesy of Switzer Lofts Apartments, and Plexpod Westport

Meservey - Kansas City Public Schools

4210 East 45th Street, Kansas City, MO 64130

For Sale



For more information:

Christel Highland
816.410.9584
chighland@blockllc.com

Aaron M. Mesmer, CCIM
816.412.5858
amesmer@blockllc.com