

## Full Floor Availability on the Plaza



### Located On The Country Club Plaza

- Up to 16,617 contiguous SF available
- Upgrades include new HVAC and Elevators
- Building signage available
- Competitive rental rates
- Excellent Plaza access and visibility
- Covered parking available

### For more information:

Reid Kasic  
816.878.6316  
rkasic@blockllc.com

Riley Rader  
816.412.8482  
rrader@blockllc.com

Max Wasserstrom, CFA  
816.412.8428  
mwasserstrom@blockllc.com

The information contained in this marketing flyer is presented as general information only. Block Real Estate Services, LLC. makes no representation as to its accuracy. This information is not intended as legal, financial or real estate advice and must not be relied upon as such. You should make your own inquiries, obtain independent inspections, and seek professional advice tailored to your specific circumstances before making any legal, financial or real estate decisions.

## Building Specifications

**Building Size:** Approximately 105,234 SF Gross building area

**Building Description:** Seven-story building with reflective glass exterior

<b>Space Available:</b>	Suite 210	7,330 SF	\$25 PSF
	Suite 300	14,322 SF	\$25 PSF
	Suite 400	14,322 SF	\$25 PSF
	Suite 510	1,494 SF	\$25 PSF
	Suite 517	2,623 SF	\$25 PSF
	Suite 518	309 SF	\$25 PSF
	Suite 519	565 SF	\$25 PSF
	Suite 525	1,790 SF	\$25 PSF
	Suite 600	5,110 SF	\$25 PSF
	Suite 601	1,717 SF	\$25 PSF
	Suite 620	2,295 SF	\$25 PSF
	Suite 625	1,103 SF	\$25 PSF
	Suite 635	302 SF	\$25 PSF
	Suite 718	604 SF	\$25 PSF

**Zoning:** Planned Office

**HVAC:** Variable Air Volume

**Parking:** The building has 208 covered and 48 uncovered parking spaces in the attached garage. The building has 12 surfaces spaces as well as acces to 120 parking spaces across the street in the Seville and Park Place garages.

**Leasing Rate:** Full Service rate from \$25.00 per RSF with annual increments

**Operating costs:** Base Year

**TI Allowance:** Negotiable

### For more information:

Reid Kotic  
816.878.6316  
rkotic@blockllc.com

Max Wasserstrom, CFA  
816.412.8428  
mwasserstrom@blockllc.com

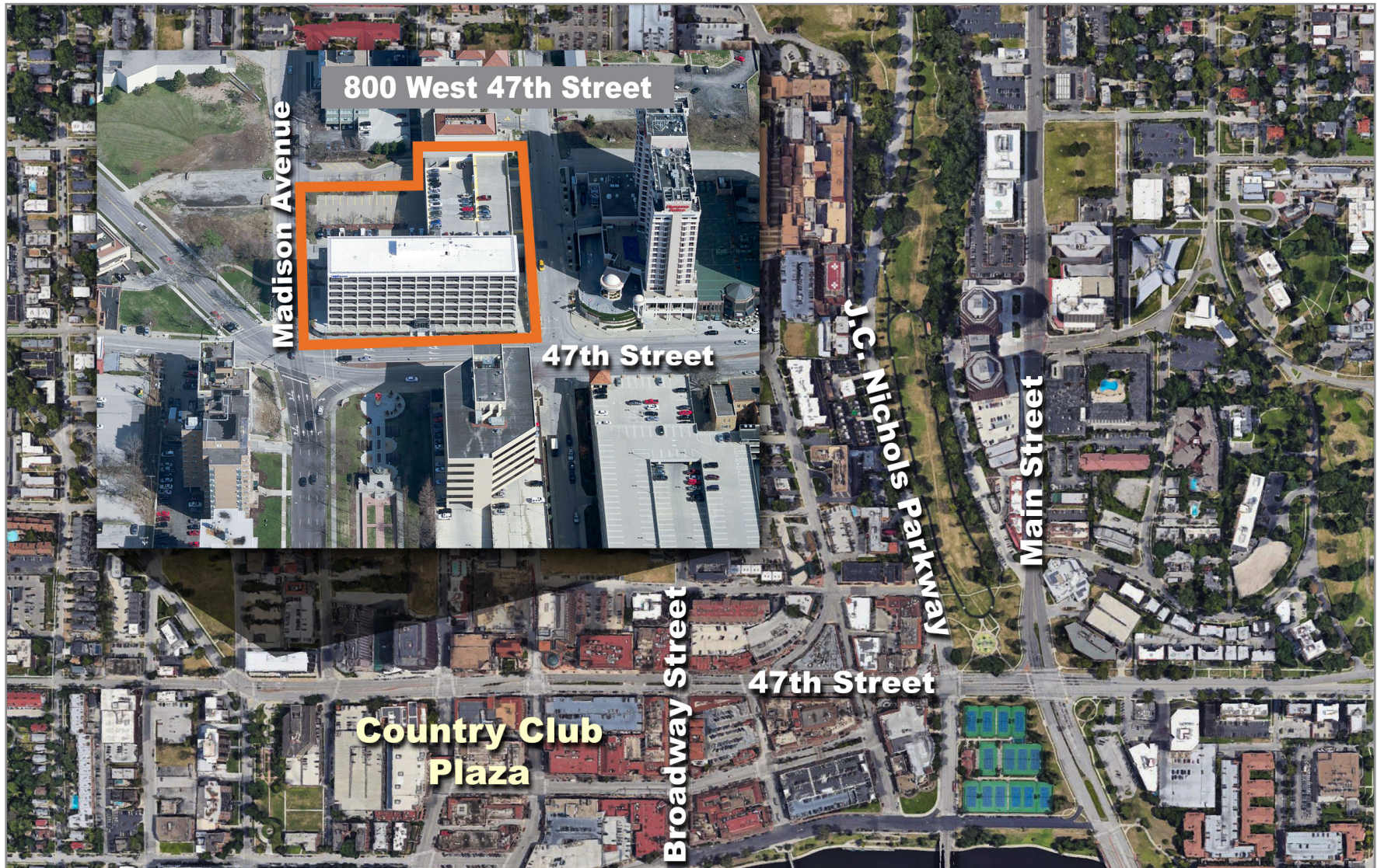
Riley Rader  
816.412.8482  
rrader@blockllc.com



# Plaza Corporate Centre

800 W. 47th St., Kansas City, Missouri

# For Lease



4622 Pennsylvania Avenue, Suite 700  
Kansas City, MO 64112  
816.756.1400 | [www.BLOCKLLC.com](http://www.BLOCKLLC.com)

**BLOCK**  
REAL ESTATE SERVICES, LLC



# Plaza Corporate Centre

800 West 47th St., Kansas City, Missouri

# For Lease

Suite 210



4622 Pennsylvania Avenue, Suite 700  
Kansas City, MO 64112  
816.756.1400 | [www.BLOCKLLC.com](http://www.BLOCKLLC.com)

**BLOCK**  
REAL ESTATE SERVICES, LLC



# Plaza Corporate Centre

800 West 47th St., Kansas City, Missouri

# For Lease

Suite 300 & 400



4622 Pennsylvania Avenue, Suite 700  
Kansas City, MO 64112  
816.756.1400 | [www.BLOCKLLC.com](http://www.BLOCKLLC.com)

**BLOCK**  
REAL ESTATE SERVICES, LLC



# Plaza Corporate Centre

800 West 47th St., Kansas City, Missouri

# For Lease

Suite 525



Suite 601





## Area Amenities

The Plaza's popularity and reputation has been recognized around the country. The entire 15-block district, with more than 150 shops and dozens of fine restaurants, makes The Country Club Plaza Kansas City's premier shopping, dining and entertainment destination.

Shoppers will recognize fine stores like Anthropologie and Tiffany & Co. Original Kansas City stores like Halls and Tivol give local flavor to the Plaza's reputation as a national fashion center. Pleasant surprises can be found along each block – from tiny shoe boutiques to delicious chocolatiers, couture clothiers, stylish salons and fine jewelry.

The Country Club Plaza boasts a collection of Kansas City's favorite restaurants. From charming al fresco cafes, to fresh seafood, steak and barbecue, the Plaza has something to suit any appetite or occasion.

The Plaza is kept lively with a year-round calendar of music and special events, including the famous Plaza Lights and the widely recognized Plaza Art Fair.

With its rich history, fine dining, superb shopping and entertaining activities throughout the year, it is understandable that the Country Club Plaza is the Midwest's premier destination.

*Information courtesy of [www.countryclubplaza.com](http://www.countryclubplaza.com)*





# Plaza Corporate Centre

800 W. 47th St., Kansas City, Missouri

# For Lease

## Second Floor Plan



**Suite 210**  
7,330 SF



800 West 47th St., Kansas City, Missouri

### Third Floor Plan



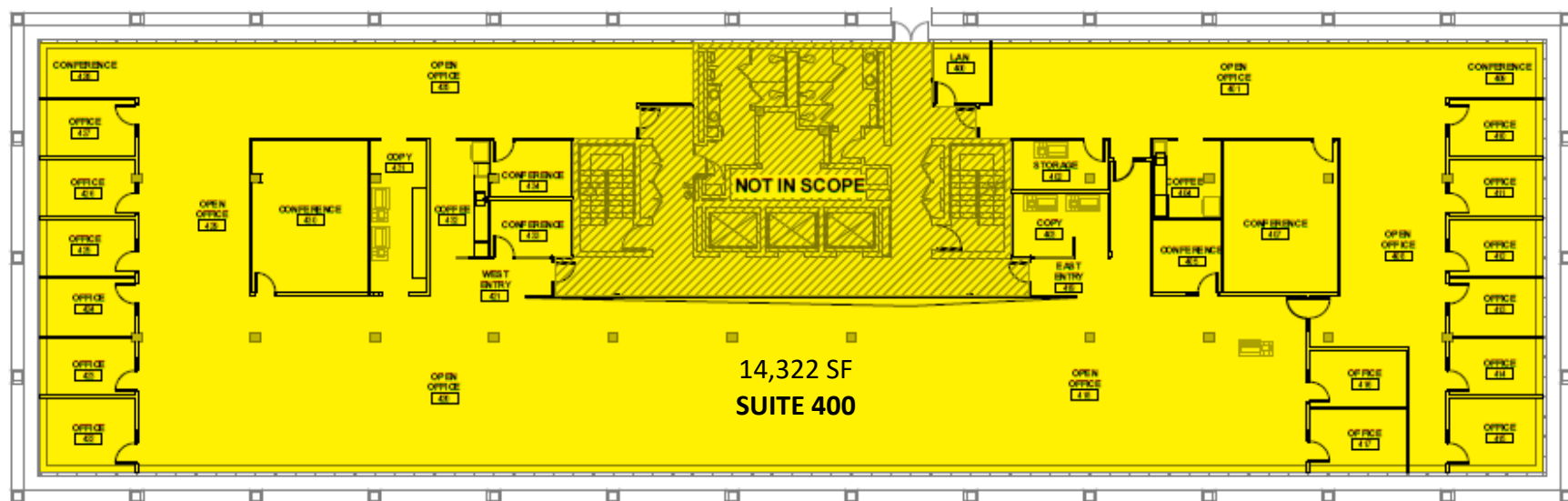


# Plaza Corporate Centre

800 West 47th St., Kansas City, Missouri

# For Lease

## Fourth Floor Plan



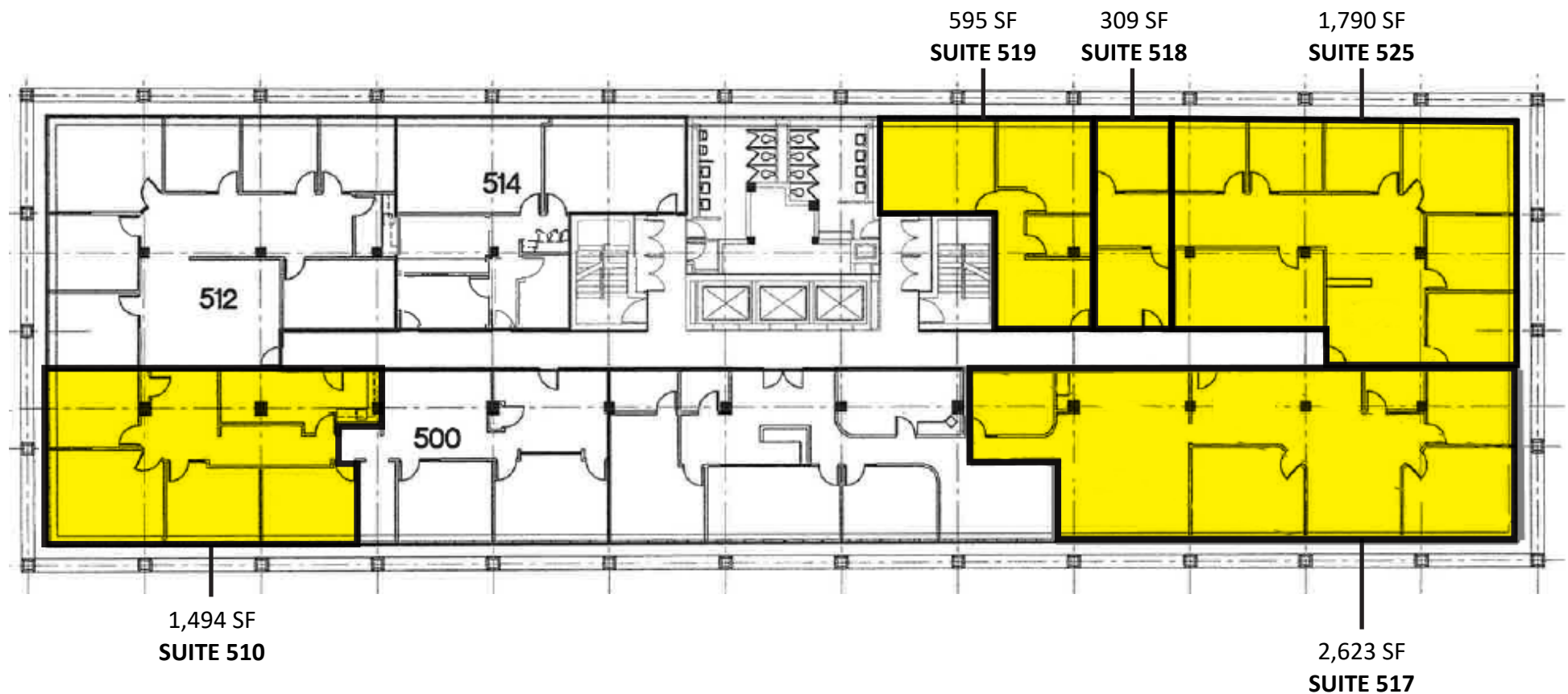


# Plaza Corporate Centre

800 West 47th St., Kansas City, Missouri

# For Lease

## Fifth Floor Plan



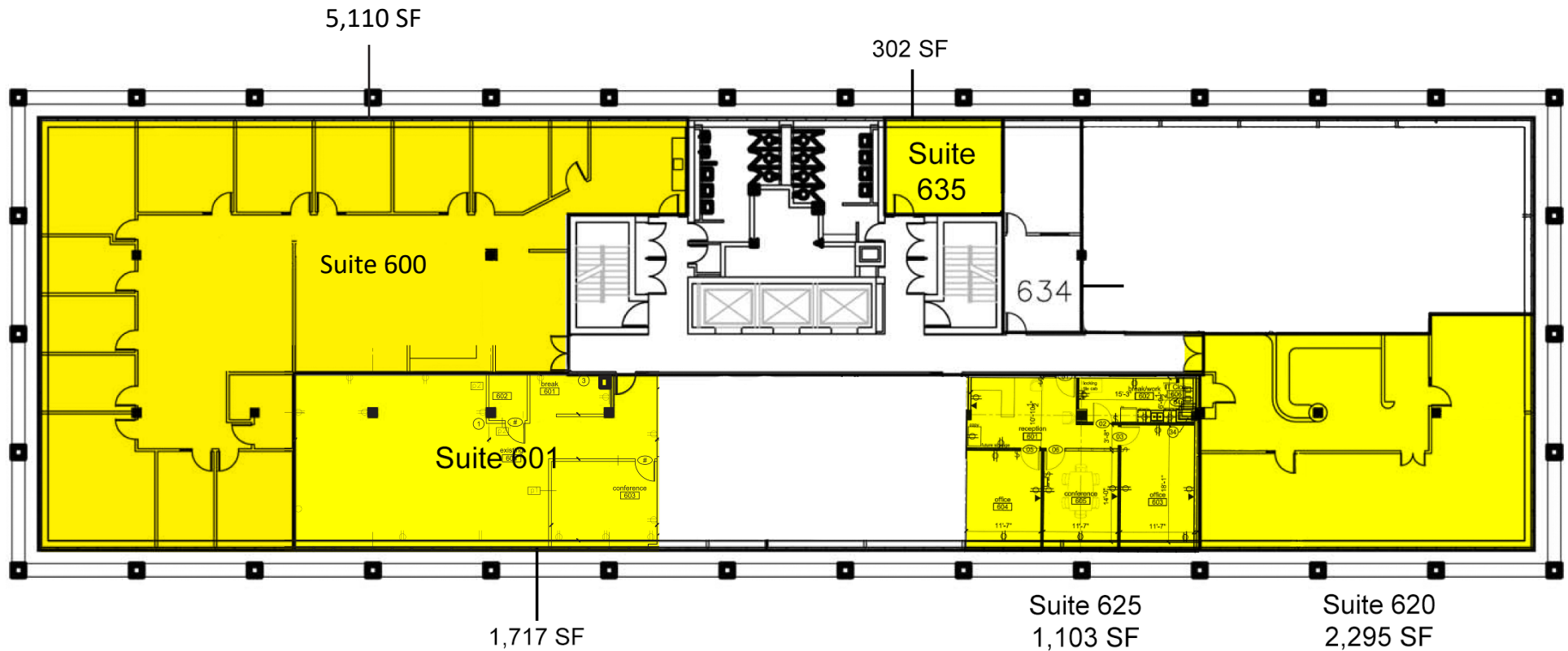


# Plaza Corporate Centre

800 West 47th St., Kansas City, Missouri

# For Lease

## Sixth Floor Plan



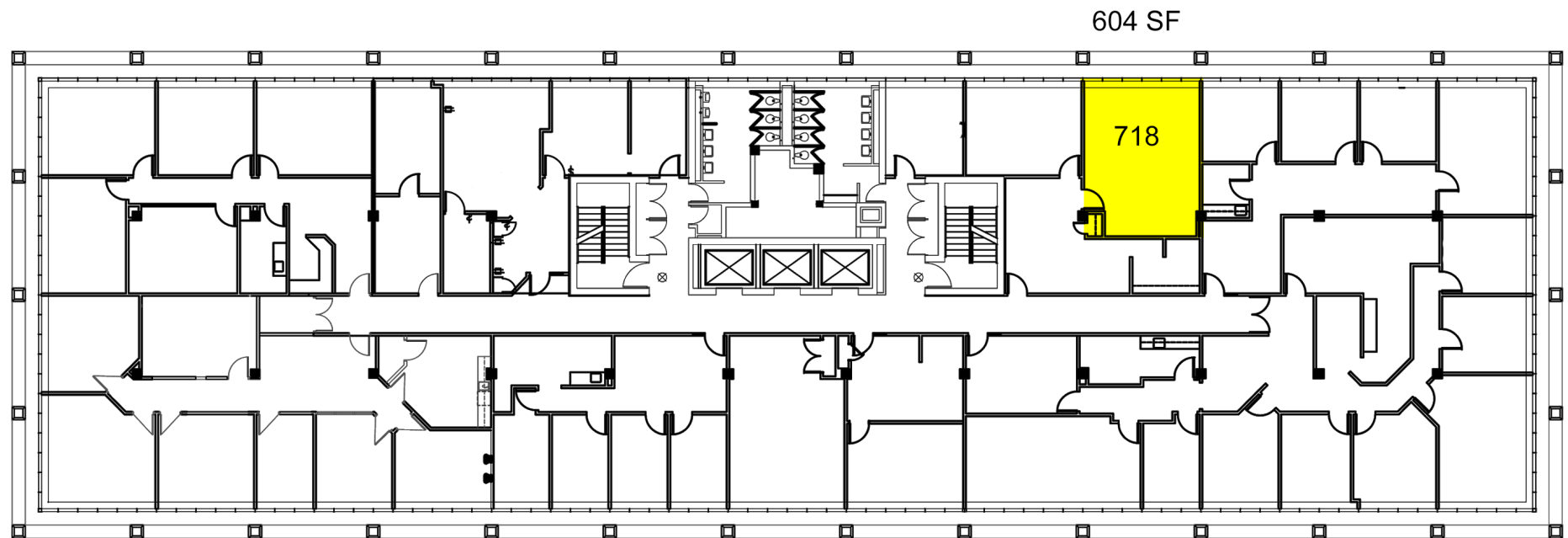


# Plaza Corporate Centre

800 West 47th St., Kansas City, Missouri

# For Lease

## Seventh Floor Plan



4622 Pennsylvania Avenue, Suite 700  
Kansas City, MO 64112  
816.756.1400 | [www.BLOCKLLC.com](http://www.BLOCKLLC.com)

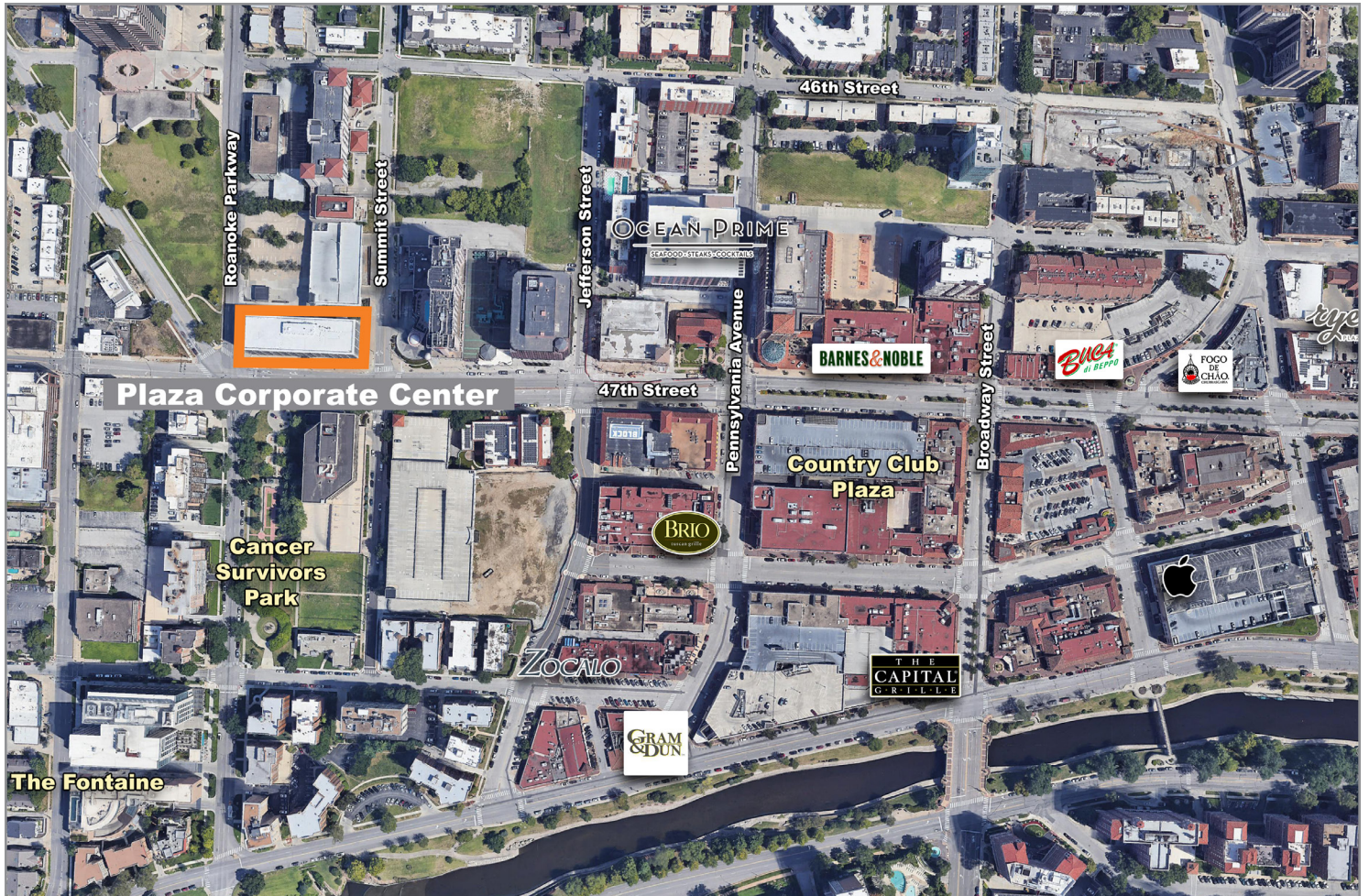
**BLOCK**  
REAL ESTATE SERVICES, LLC



# Plaza Corporate Centre

800 West 47th St., Kansas City, Missouri

# For Lease



For more information:

Reid Kasic  
816.878.6316  
kasic@blockllc.com

Riley Rader  
816.412.8482  
rrader@blockllc.com

Max Wasserstrom, CFA  
816.412.8428  
mwasserstrom@blockllc.com

4622 Pennsylvania Avenue, Suite 700  
Kansas City, MO 64112  
816.756.1400 | [www.BLOCKLLC.com](http://www.BLOCKLLC.com)



**BLOCK**  
REAL ESTATE SERVICES, LLC