

Adaptive Reuse Opportunity



Adaptive Reuse Opportunity

1. Pershing Elementary School - Closed 2009.
2. 46,851 SF Building on 3.56 acres.
3. Minutes to 71 highway.
4. Incredible adaptive reuse opportunity.
5. Proximate to Kansas City landmarks and amenities such as: Kansas City Zoo, Swope Soccer Village, Swope Golf Course, Hillcrest Golf Course, Blue River Trails, YMCA, Research Medical, Rockhurst University, and multiple parks.

For more information:

Christel Highland

816.410.9584

chighland@blockllc.com

Aaron M. Mesmer, CCIM

816.412.5858

amesmer@blockllc.com

The information contained in this marketing flyer is presented as general information only. Block Real Estate Services, LLC makes no representation as to its accuracy.

This information is not intended as legal, financial or real estate advice and must not be relied upon as such. You should make your own inquiries, obtain independent inspections, and seek professional advice tailored to your specific circumstances before making any legal, financial or real estate decisions.

Building Specifications

Square Feet Available: 46,851 SF

Acreage: 3.56±

Property Type: Adaptive reuse, and infill opportunity.

Year Built: 1924, 1927, 1930, 1953

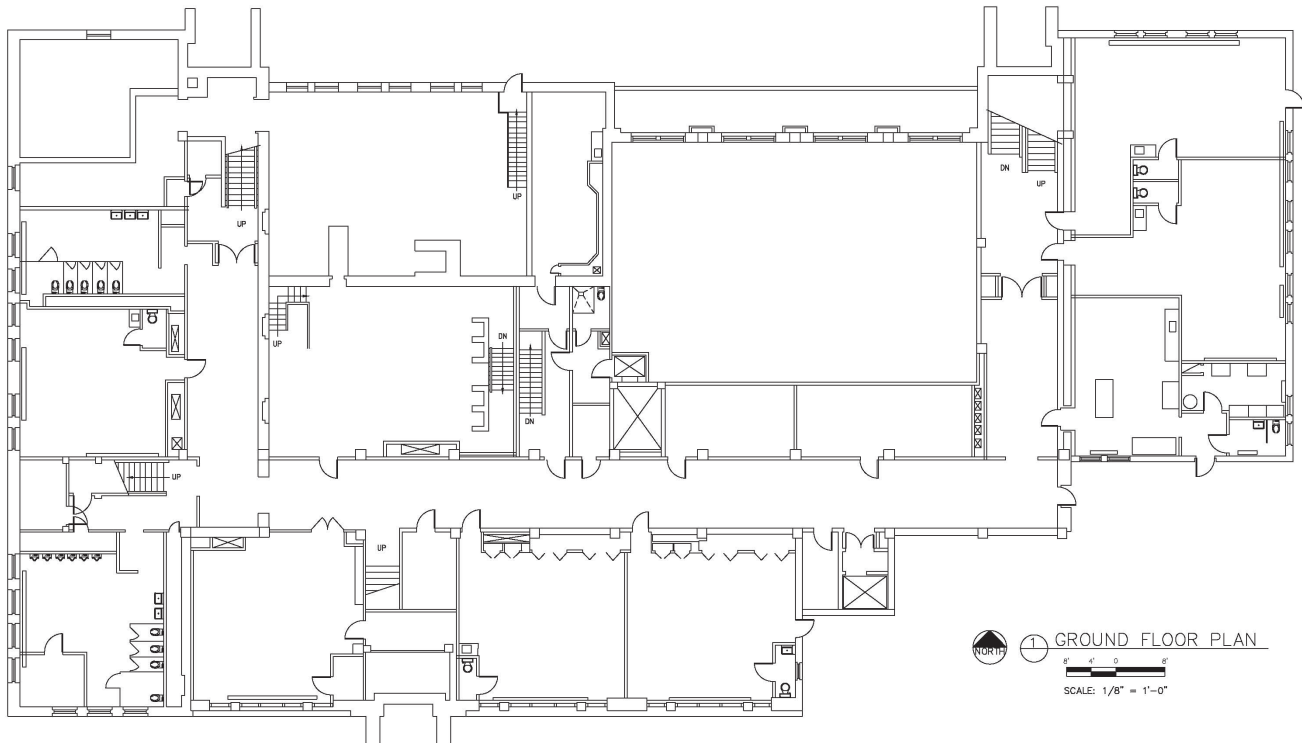
Year Closed: 2009

Zoning: R-6

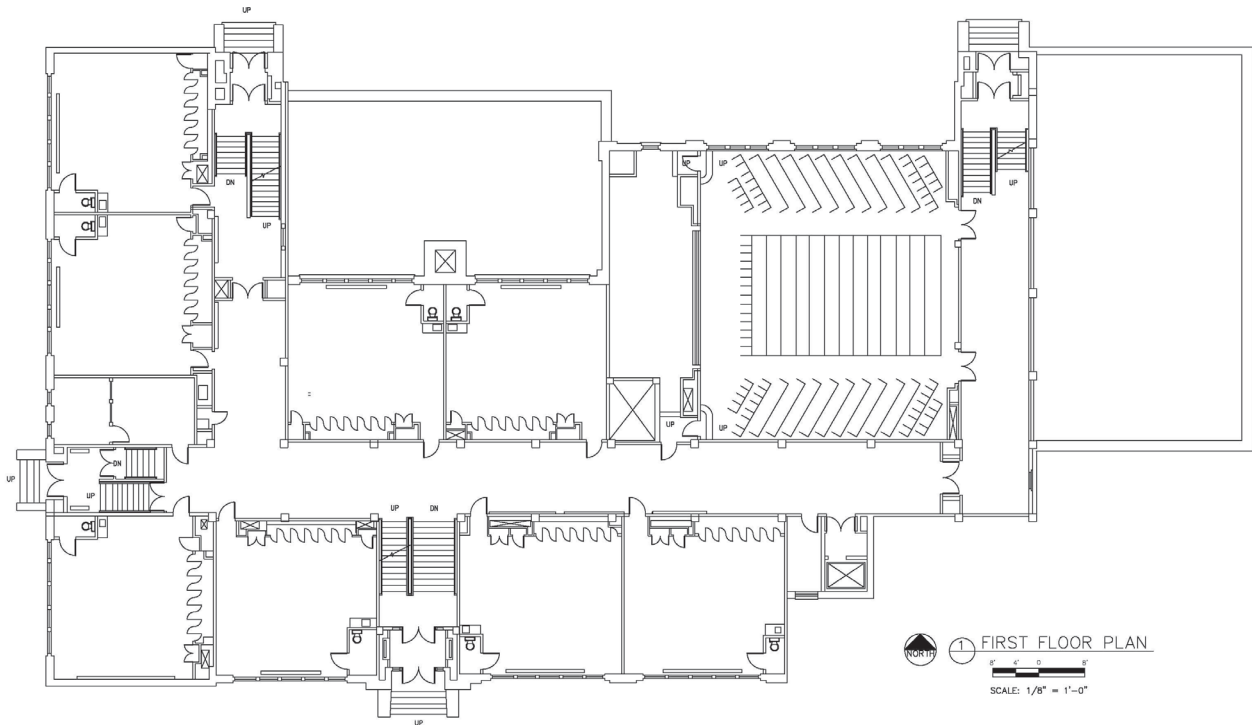
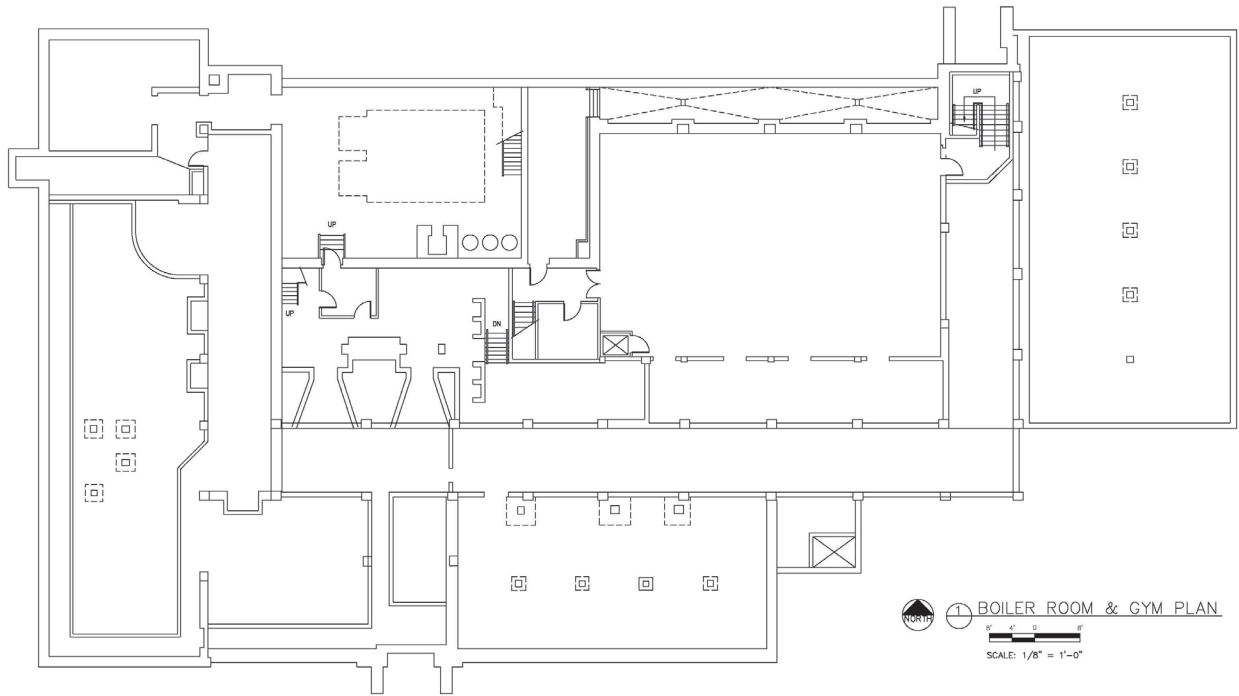
Neighborhood: Blue Hills

Number of Floors: 4

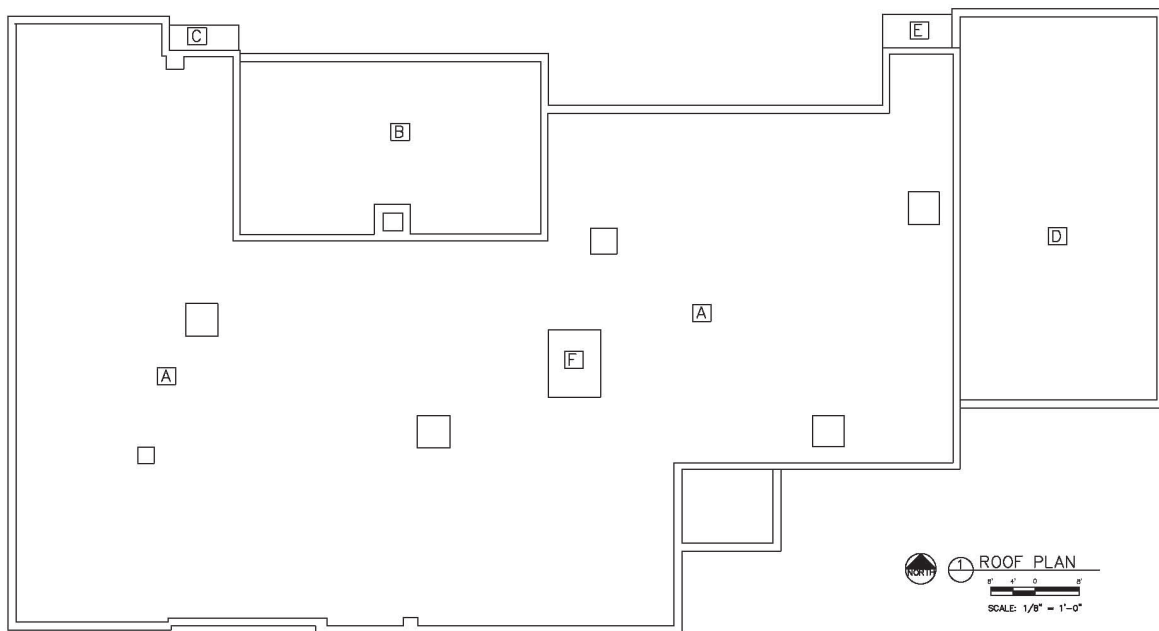
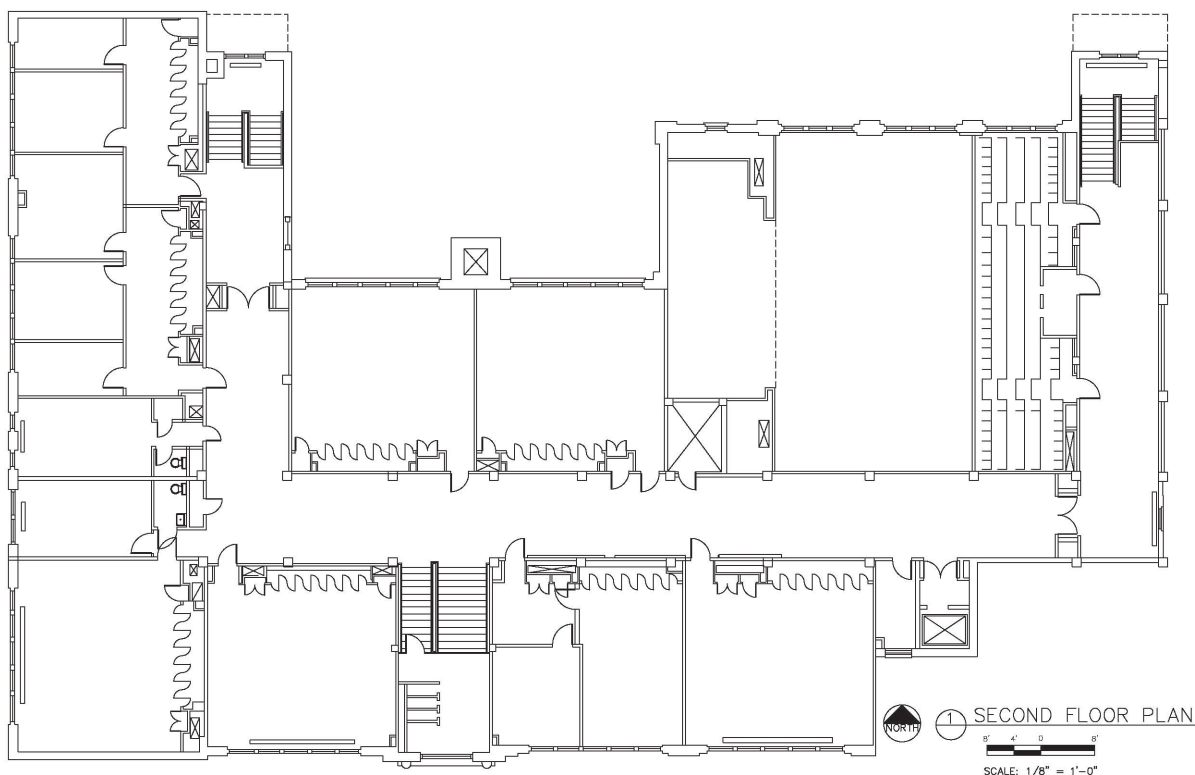
Special Features: Opportunity zone qualified, historical designation eligible, auditorium, gymnasium, cafeteria, and elevator.



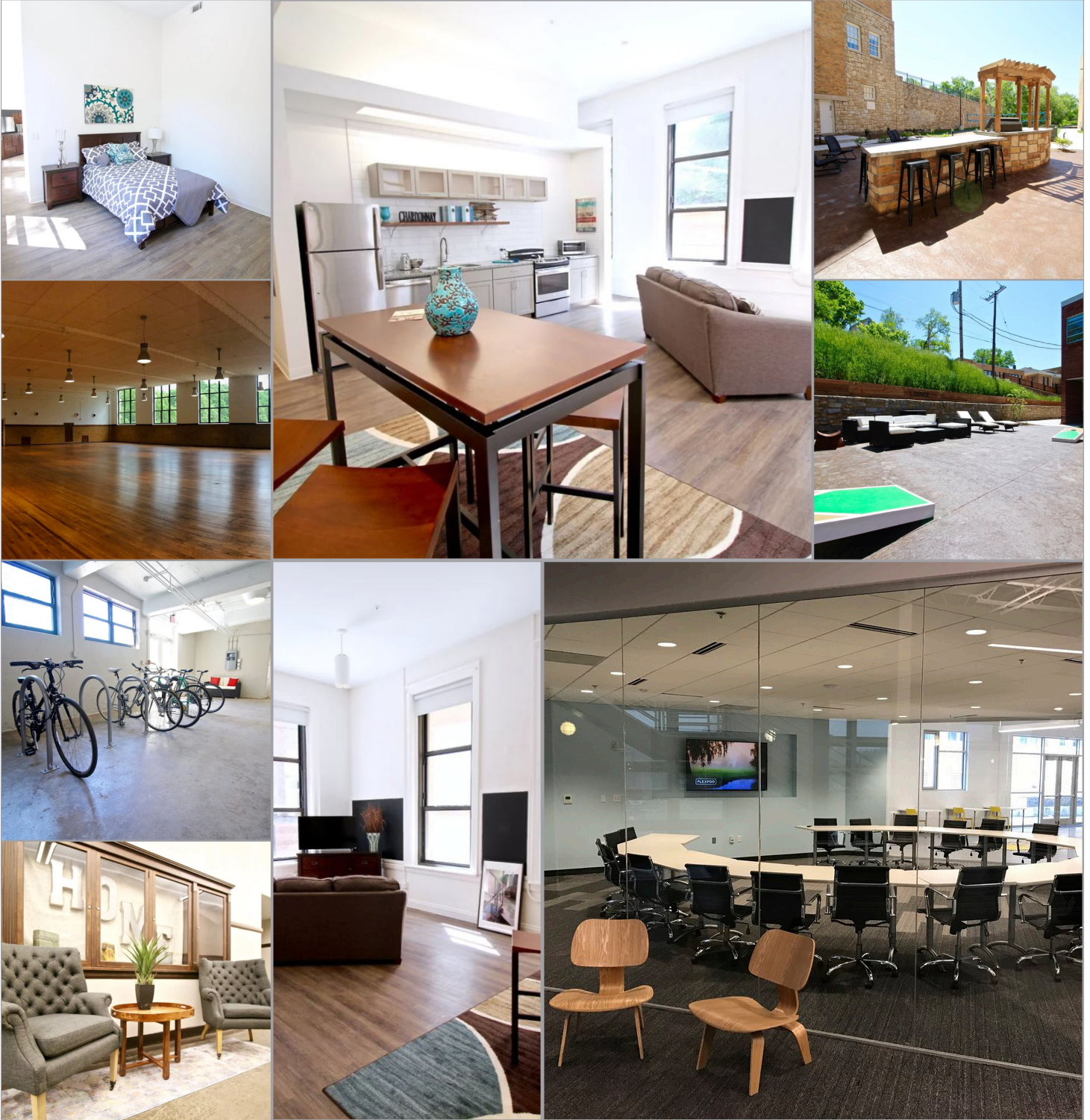
Boiler, Gym & 1st Floor Plan



2nd Floor & Roof Plan



Completed repurposing projects

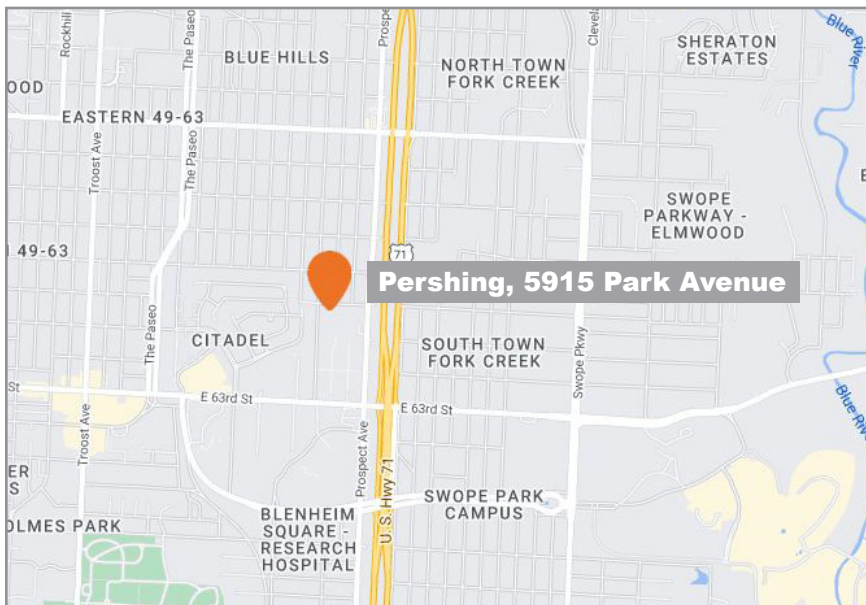
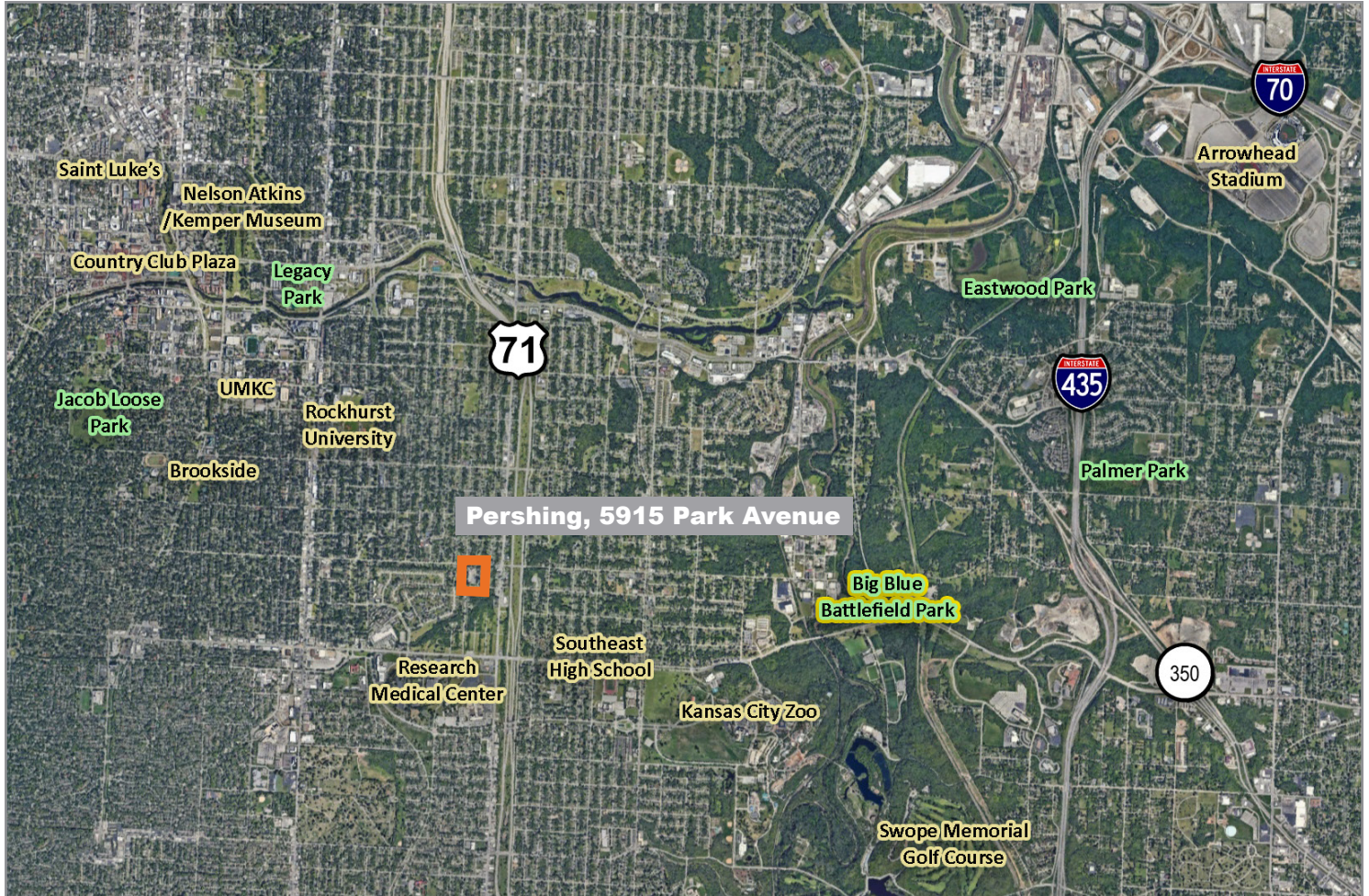


Images are a courtesy of Switzer Lofts Apartments, and Plexpod Westport

Pershing - Kansas City Public Schools

5915 Park Avenue, Kansas City, MO 64130

For Sale



For more information:

Christel Highland

816.410.9584

chighland@blockllc.com

Aaron M. Mesmer, CCIM

816.412.5858

amesmer@blockllc.com