

## Offer Deadline Extended



### Kansas City Public Schools Available Sites:

**Meservey**, 4210 East 45th Street, Kansas City, Missouri 64130

Offer Accepted: First Come, First Served

**Pershing**, 5915 Park Avenue, Kansas City, Missouri 64130

Offer Accepted: First Come, First Served

**NEW Scarritt**, 3509 Anderson Avenue, Kansas City, Missouri 64124

Offer Deadline: *EXTENDED* Oct. 31, 2022

**NEW King/Weeks**, 4201 Indiana, Kansas City, Missouri 64130

Offer Deadline: *EXTENDED* Oct. 31, 2022

**Askew**, 2630 Topping, Kansas City, Missouri 64127

Offer Accepted: First Come, First Served

\*Properties may be acquired individually

The information contained in this marketing flyer is presented as general information only. Block Real Estate Services, LLC makes no representation as to its accuracy.

This information is not intended as legal, financial or real estate advice and must not be relied upon as such. You should make your own inquiries, obtain independent inspections, and seek professional advice tailored to your specific circumstances before making any legal, financial or real estate decisions.

### For more information:

Christel Highland

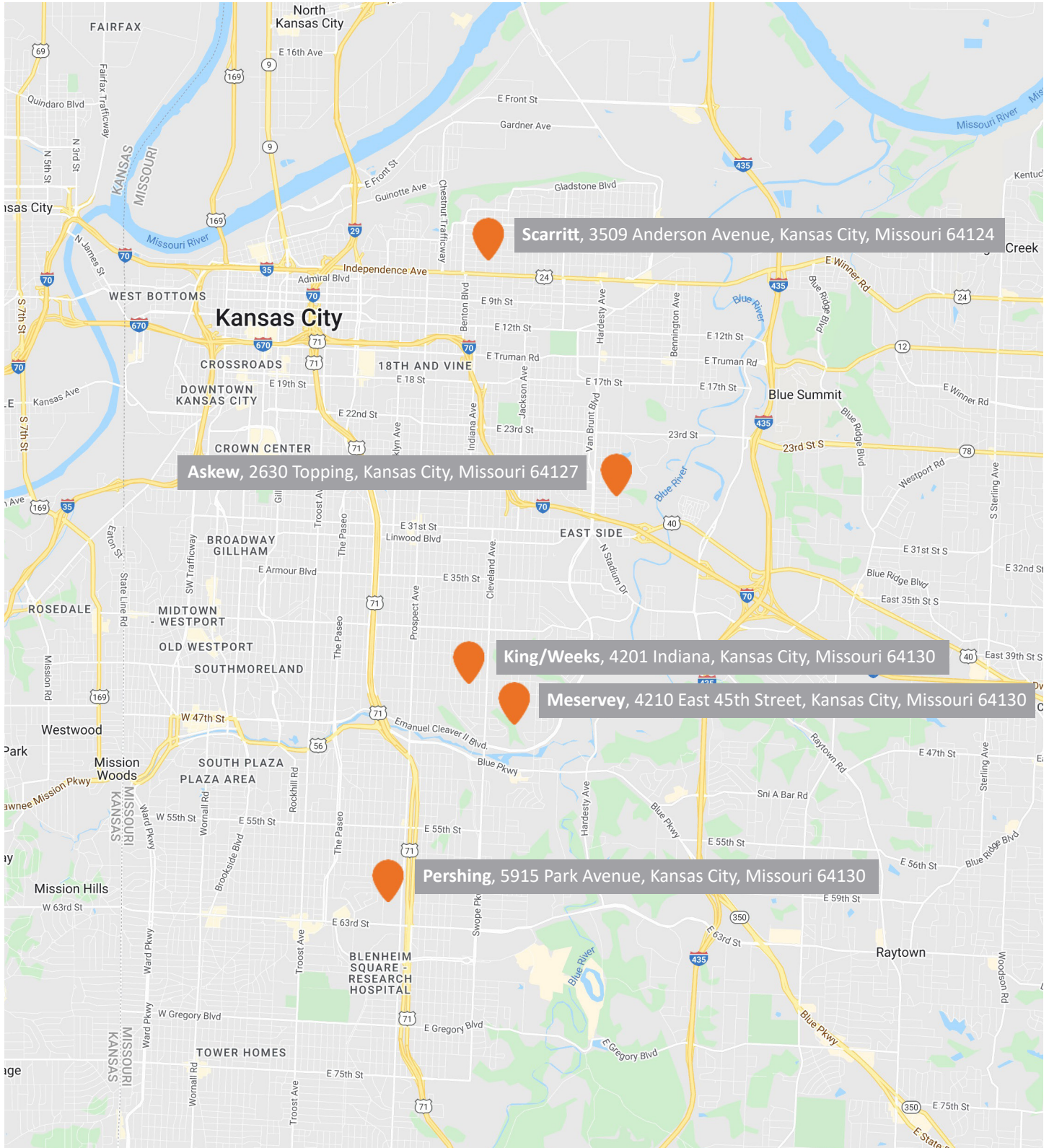
816.410.9584

[chighland@blockllc.com](mailto:chighland@blockllc.com)

Aaron M. Mesmer, CCIM

816.412.5858

[amesmer@blockllc.com](mailto:amesmer@blockllc.com)



For more information: Christel Highland | 816.410.9584 | [chighland@blockllc.com](mailto:chighland@blockllc.com) - Aaron M. Mesmer, CCIM | 816.412.5858 | [amesmer@blockllc.com](mailto:amesmer@blockllc.com)

## Meservey Specification



Square Feet Available: 64,900 SF

Acreage: 3.8±

Property Type: Adaptive reuse, and infill opportunity.

Year Built: 1928, 1934, 1956

Year Closed: 2009

Zoning: R-2.5

Neighborhood: Vineyard

Number of Floors: 4

Special Features: Historical designation eligible, auditorium, gymnasium, cafeteria, and elevator.

For more information: Christel Highland | 816.410.9584 | [chighland@blockllc.com](mailto:chighland@blockllc.com) - Aaron M. Mesmer, CCIM | 816.412.5858 | [amesmer@blockllc.com](mailto:amesmer@blockllc.com)

## Pershing Specification



Square Feet Available: 46,851 SF

Acreage: 3.56±

Property Type: Adaptive reuse, and infill opportunity.

Year Built: 1924, 1927, 1930, 1953

Year Closed: 2009

Zoning: R-6

Neighborhood: Blue Hills

Number of Floors: 4

Special Features: Opportunity zone qualified, historical designation eligible, auditorium, gymnasium, cafeteria, and elevator.

For more information: Christel Highland | 816.410.9584 | [chighland@blockllc.com](mailto:chighland@blockllc.com) - Aaron M. Mesmer, CCIM | 816.412.5858 | [amesmer@blockllc.com](mailto:amesmer@blockllc.com)

## Scarritt Specification



Square Feet Available: 59,840 SF

Acreage: 2.25±

Property Type: Adaptive reuse, and infill opportunity.

Year Built: 1926, 1962

Year Closed: 2010

Zoning: R-2.5

Neighborhood: Scarritt Renaissance

Number of Floors: 3

Special Features: Opportunity zone qualified, historical designation eligible, gym, cafeteria, and elevator

For more information: Christel Highland | 816.410.9584 | [chighland@blockllc.com](mailto:chighland@blockllc.com) - Aaron M. Mesmer, CCIM | 816.412.5858 | [amesmer@blockllc.com](mailto:amesmer@blockllc.com)

## King/Weeks Specification



Square Feet Available: 128,370 SF / 78,016 SF

Acreage: 20±

Property Type: Adaptive reuse, and infill opportunity.

Year Built: 1968

Year Closed: 2010, 2014

Zoning: B1-1, B3-2, M1-5, R-2.5

Neighborhood: Oak Park

Number of Floors: 2

Special Features: Large lot, auditorium, gymnasium, cafeteria, and elevator.

For more information: Christel Highland | 816.410.9584 | [chighland@blockllc.com](mailto:chighland@blockllc.com) - Aaron M. Mesmer, CCIM | 816.412.5858 | [amesmer@blockllc.com](mailto:amesmer@blockllc.com)

## Askew Specification



Square Feet Available: 58,190 SF

Acreage: 3.86±

Property Type: Adaptive reuse, and infill opportunity.

Year Built: 1923, 1956, 1968

Year Closed: 2010

Zoning: R-2.5

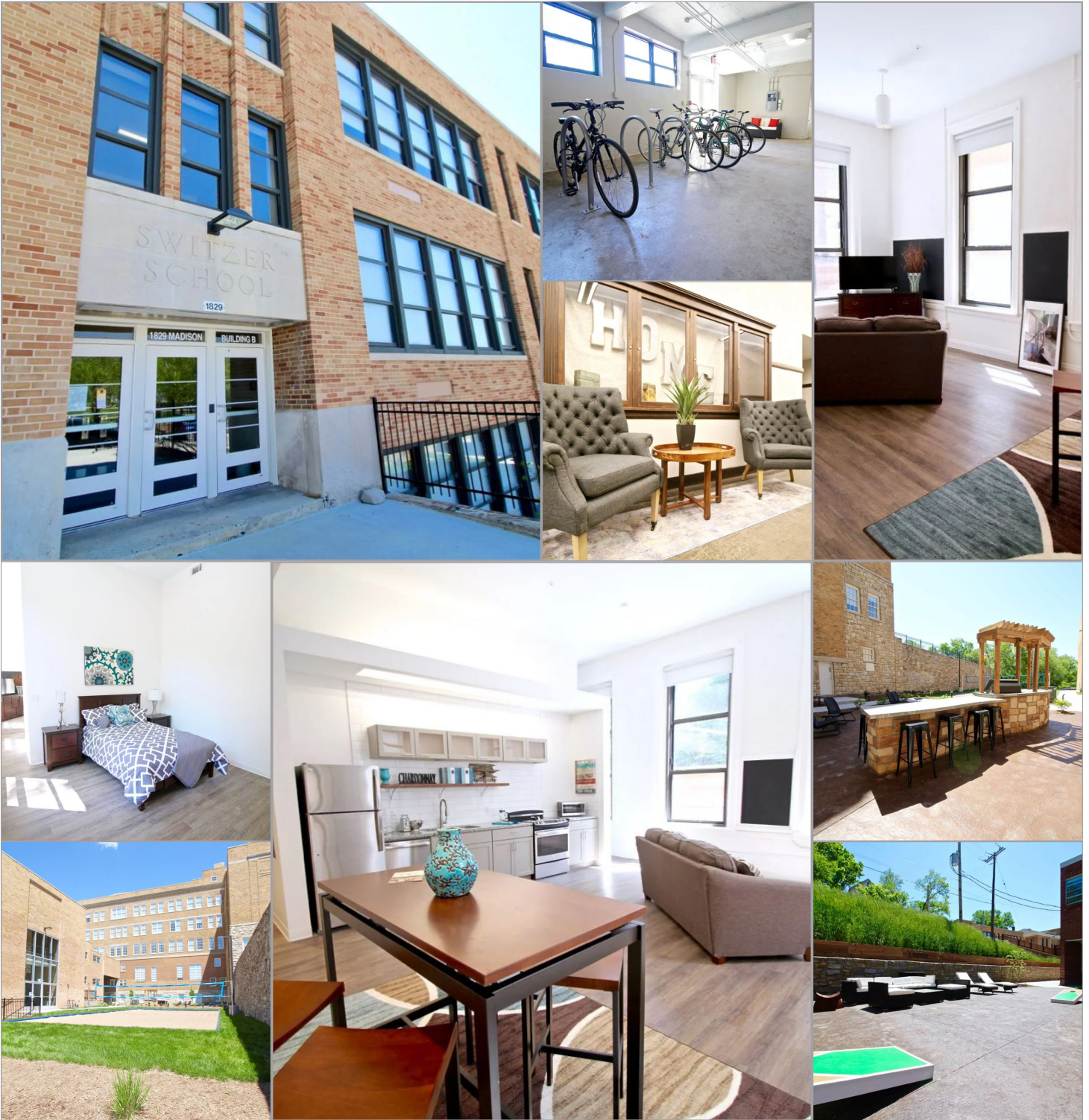
Neighborhood: Blue Valley

Number of Floors: 3

Special Features: Historical designation eligible, classrooms with individual access to outdoors, auditorium, gymnasium, cafeteria, and elevator.

For more information: Christel Highland | 816.410.9584 | [chighland@blockllc.com](mailto:chighland@blockllc.com) - Aaron M. Mesmer, CCIM | 816.412.5858 | [amesmer@blockllc.com](mailto:amesmer@blockllc.com)

Images are a courtesy of Switzer Lofts Apartments



For more information: Christel Highland | 816.410.9584 | [chighland@blockllc.com](mailto:chighland@blockllc.com) - Aaron M. Mesmer, CCIM | 816.412.5858 | [amesmer@blockllc.com](mailto:amesmer@blockllc.com)