

Adaptive Reuse Opportunity



Adaptive Reuse Opportunity

1. Askew Elementary School - Closed 2010
2. 58,190 SF Building on a large 3.86 acre site.
3. Minutes to I-70, I-435, and 71 Highways.
4. Proximate to several green spaces, Arrowhead Stadium, and more.
5. Less than two miles from VA Medical Center.
6. Multiple adaptive reuse and infill opportunities.

For more information:

Christel Highland
816.410.9584
chighland@blockllc.com

Aaron M. Mesmer, CCIM
816.412.5858
amesmer@blockllc.com

The information contained in this marketing flyer is presented as general information only. Block Real Estate Services, LLC makes no representation as to its accuracy. This information is not intended as legal, financial or real estate advice and must not be relied upon as such. You should make your own inquiries, obtain independent inspections, and seek professional advice tailored to your specific circumstances before making any legal, financial or real estate decisions.

Building Specifications

Square Feet Available: 58,190 SF

Acreage: 3.86±

Property Type: Adaptive reuse, and infill opportunity.

Year Built: 1923, 1956, 1968

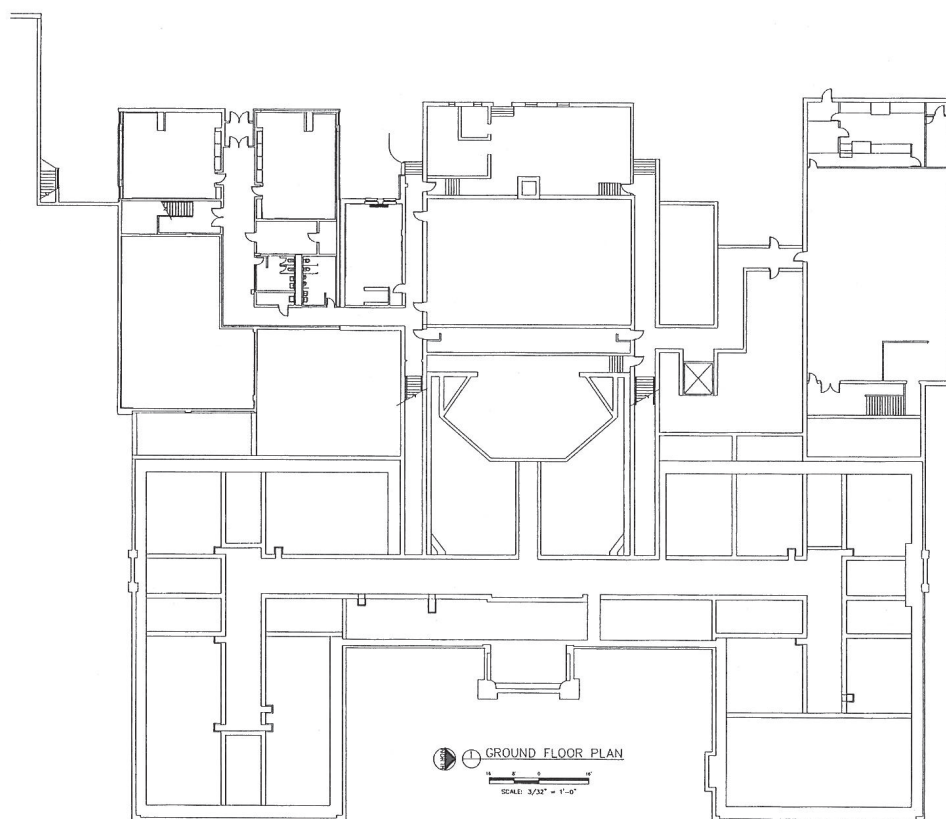
Year Closed: 2010

Zoning: R-2.5

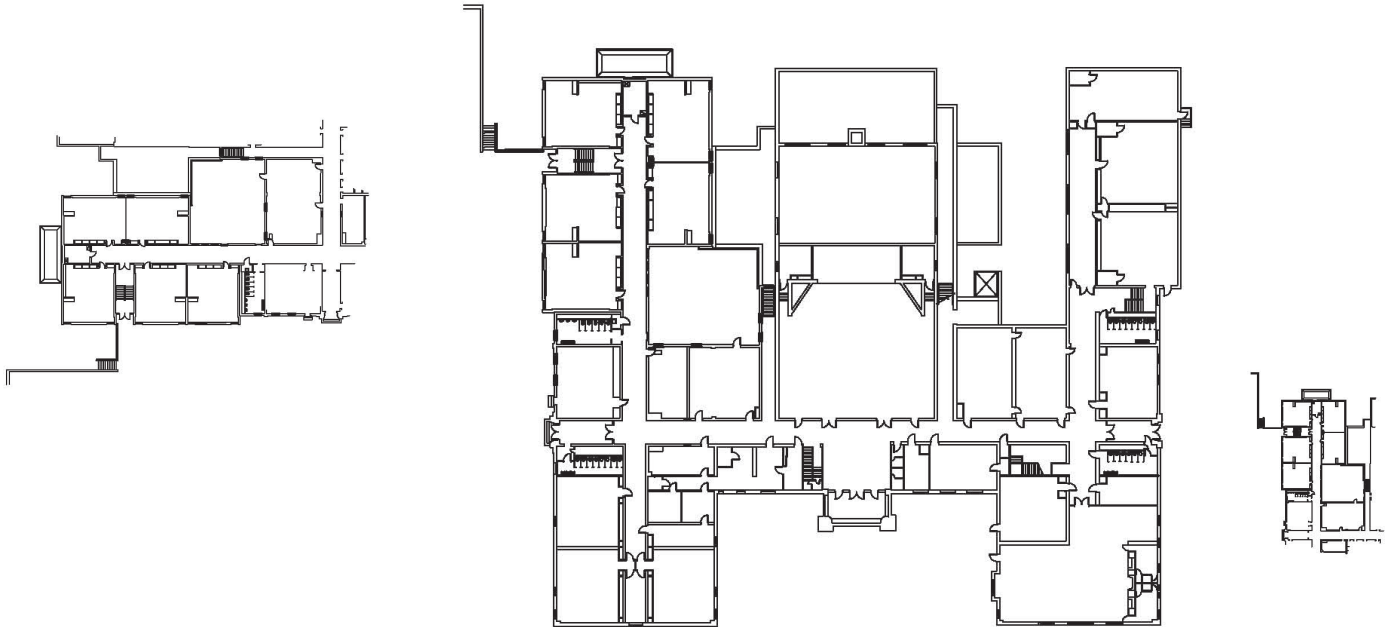
Neighborhood: Blue Valley

Number of Floors: 3

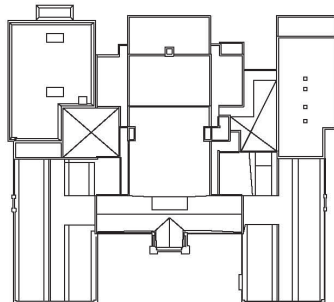
Special Features: Historical designation eligible, classrooms with individual access to outdoors, auditorium, gymnasium, cafeteria, and elevator.



1st & 2nd Floor Plan



1 FIRST FLOOR PLAN
SCALE: 3/32" = 1'-0"



2 SECOND FLOOR PLAN
SCALE: 1/8" = 1'-0"

Askew - Kansas City Public Schools

2630 Topping Avenue, Kansas City, Missouri 64127

For Sale

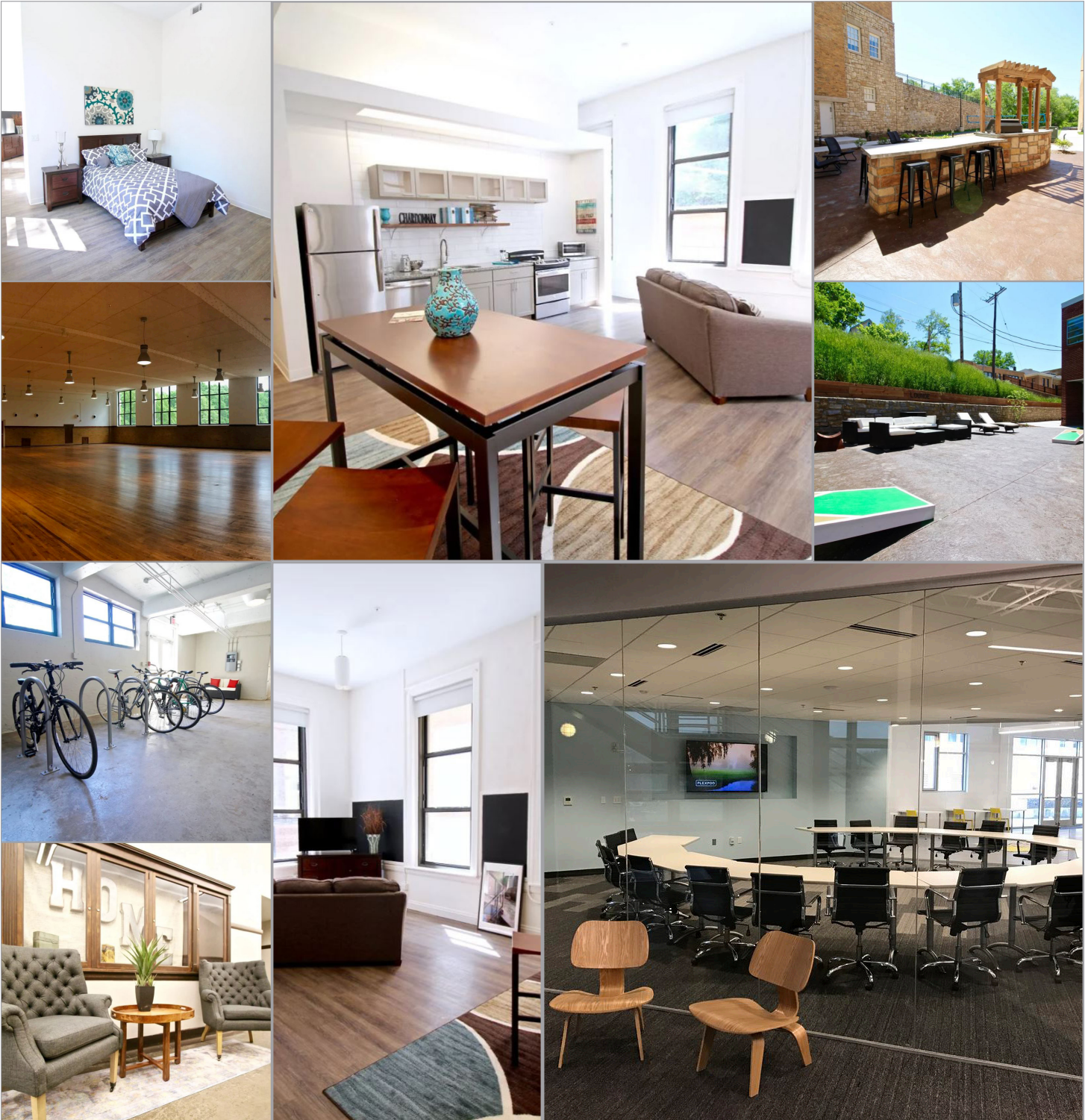


Askew - Kansas City Public Schools

2630 Topping Avenue, Kansas City, Missouri 64127

For Sale

Completed repurposing projects

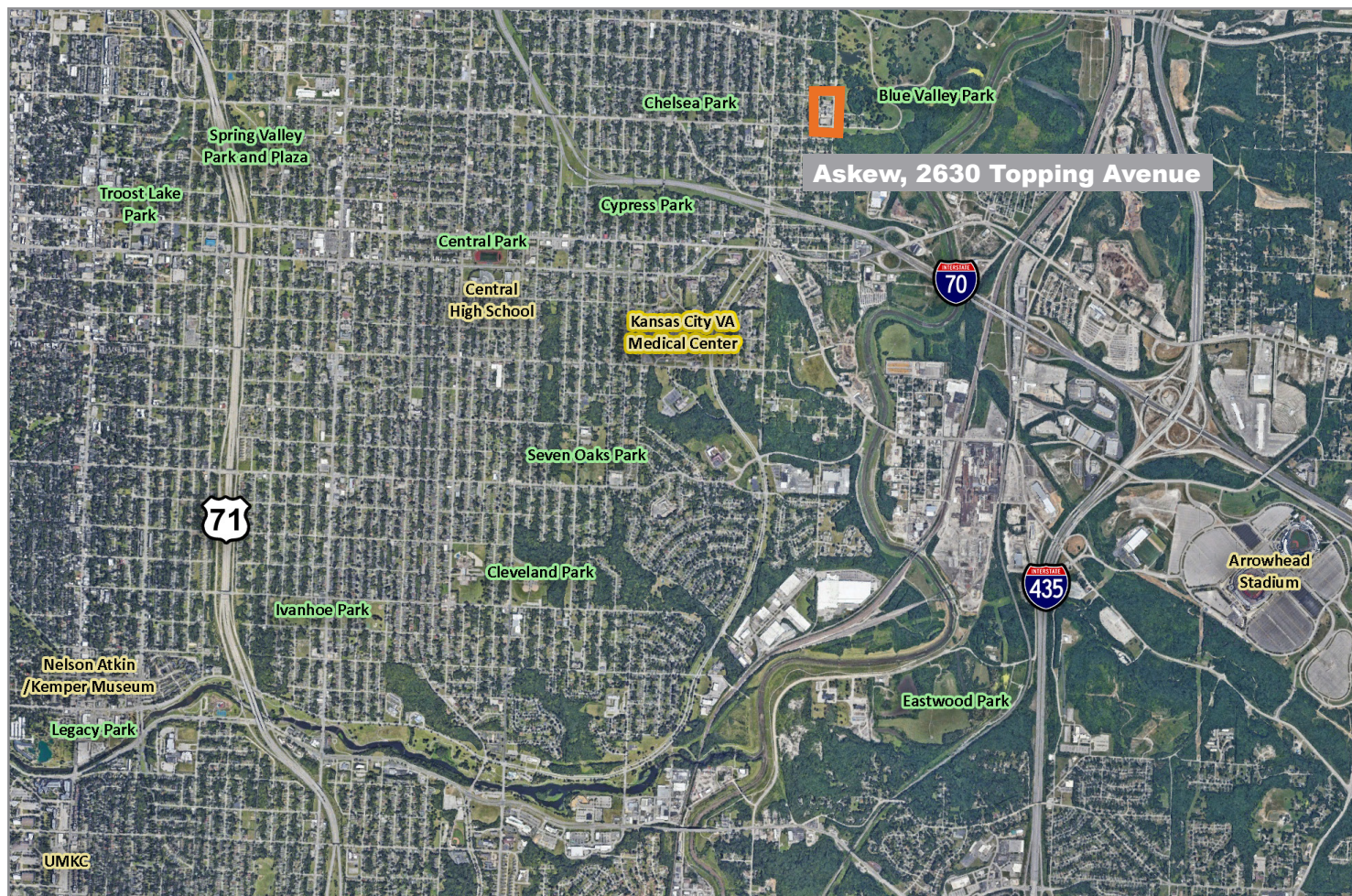


Images are a courtesy of Switzer Lofts Apartments, and Plexpod Westport

Askew - Kansas City Public Schools

2630 Topping Avenue, Kansas City, Missouri 64127

For Sale



For more information:

Christel Highland

816.410.9584

chighland@blockllc.com

Aaron M. Mesmer, CCIM

816.412.5858

amesmer@blockllc.com