

4,080 SF Available for Lease



Convenient East Lawrence Location

- \$10.00 PSF NNN
- 2 Dock Doors are available
- 1-story, multi-tenant industrial building
- Quick access to K-10 Highway

For more information:

Max Wasserstrom, CFA
816.412.8428
mwasserstrom@blockllc.com

Reid Kasic
816.878.6316
rkasic@blockllc.com

The information contained in this marketing flyer is presented as general information only. Block Real Estate Services, LLC makes no representation as to its accuracy. This information is not intended as legal, financial or real estate advice and must not be relied upon as such. You should make your own inquiries, obtain independent inspections, and seek professional advice tailored to your specific circumstances before making any legal, financial or real estate decisions.

Building Specifications

Square Feet Available:	4,080 SF
Type of Property:	1-Story, multi-tenant industrial building
Total Building Square Feet:	15,300 SF
Year Built:	2003
Ceiling Height:	16'
Loading Docks:	2 Dock Doors
Car Parking:	1.96/1000 SF
Rate:	\$10.00 PSF
Type of Lease:	NNN

For more information:

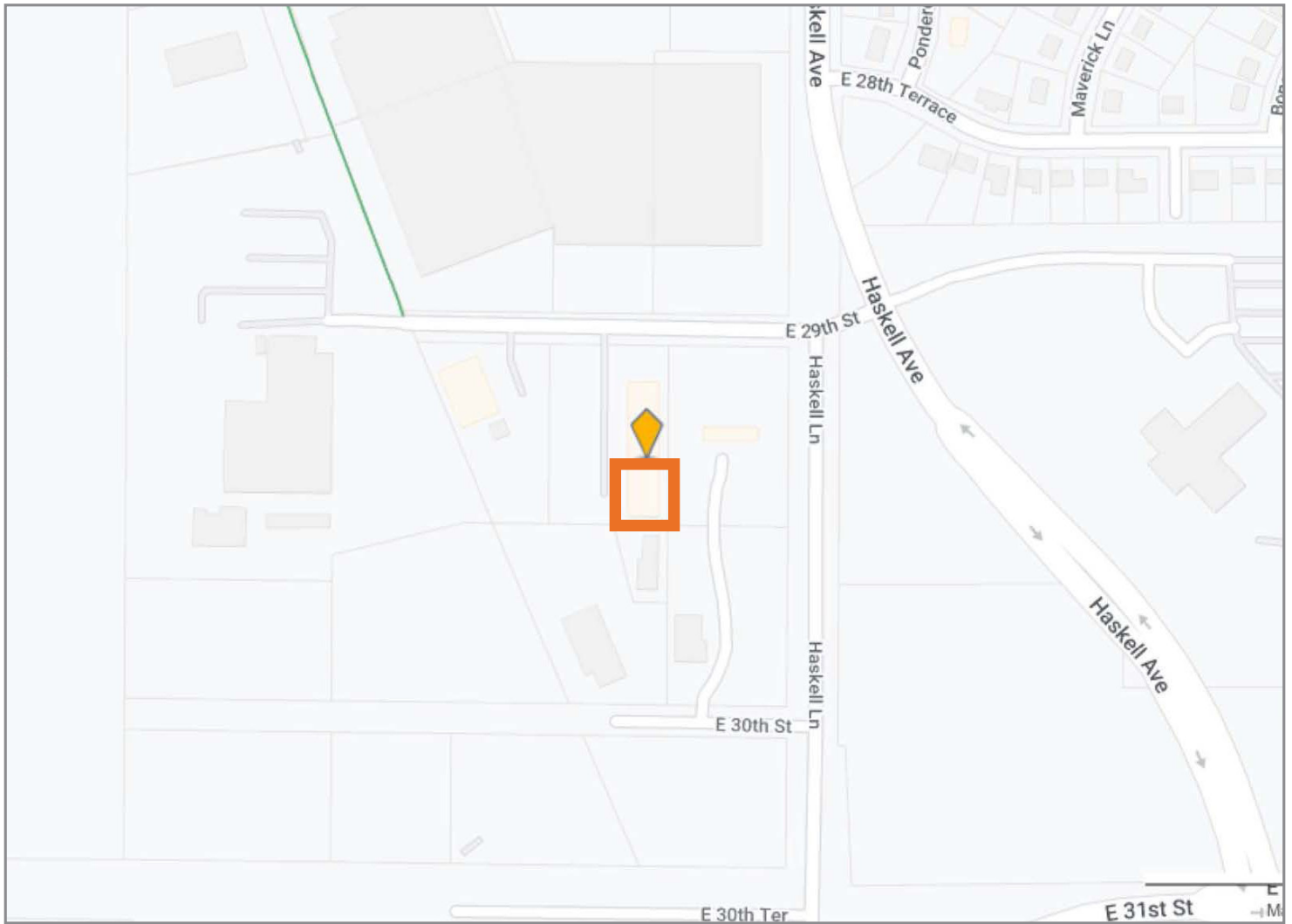
Max Wasserstrom, CFA
816.412.8428
mwasserstrom@blockllc.com

Reid Kotic
816.878.6316
rkotic@blockllc.com

Photos



Parcel Outline



For more information:

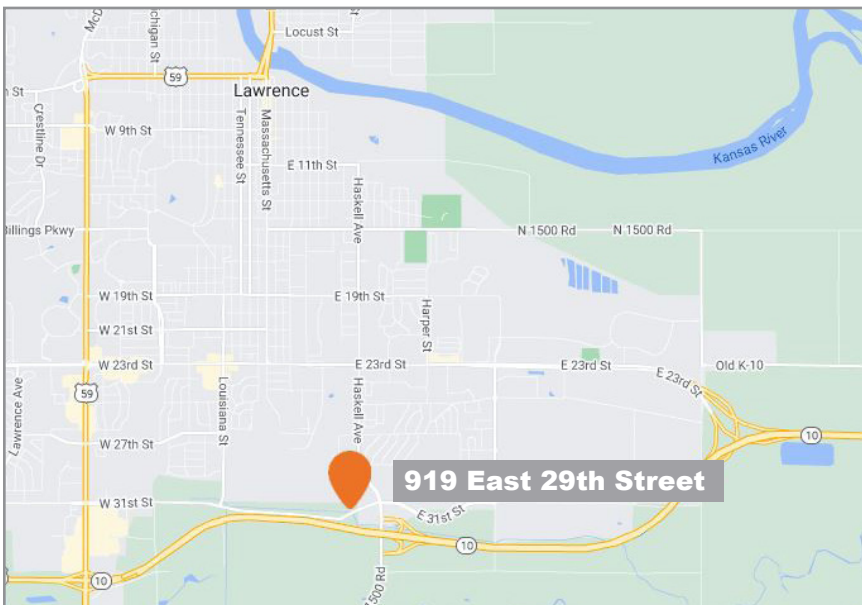
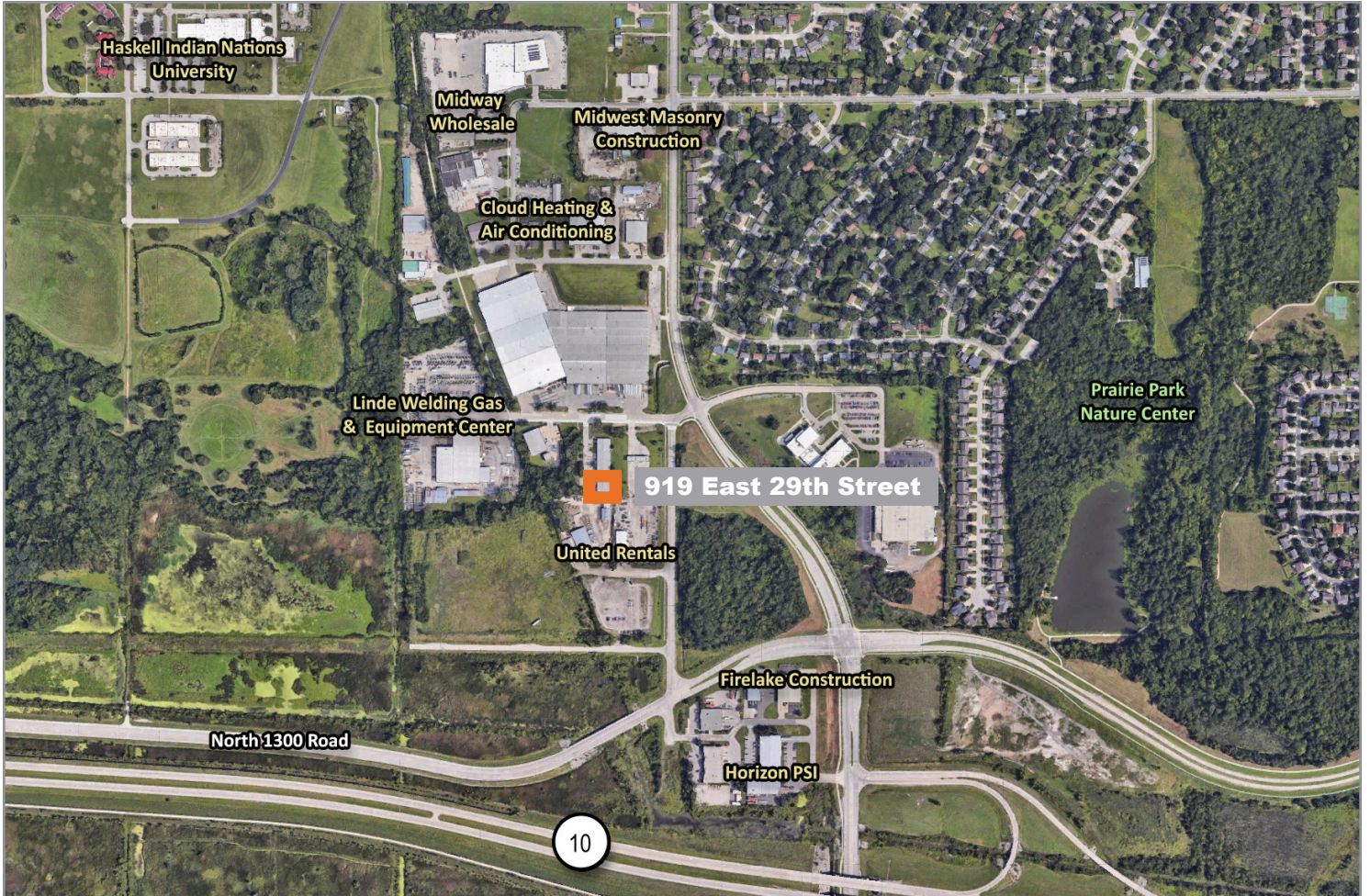
Max Wasserstrom, CFA
816.412.8428
mwasserstrom@blockllc.com

Reid Kotic
816.878.6316
rkotic@blockllc.com

Demographics

919 E 29th St Lawrence, KS 66046	1 mi radius	3 mi radius	5 mi radius	10 mi radius
Population				
2022 Estimated Population	4,145	46,657	83,663	112,552
2027 Projected Population	4,201	48,794	87,046	116,957
2020 Census Population	4,085	46,066	82,744	111,319
2010 Census Population	4,137	46,051	82,434	103,657
Projected Annual Growth 2022 to 2027	0.3%	0.9%	0.8%	0.8%
Historical Annual Growth 2010 to 2022	-	0.1%	0.1%	0.7%
2022 Median Age	29.9	27.3	30.5	32.5
Households				
2022 Estimated Households	1,440	18,425	35,004	46,607
2027 Projected Households	1,463	19,377	36,473	48,464
2020 Census Households	1,410	18,043	34,374	45,821
2010 Census Households	1,358	17,171	32,824	41,004
Projected Annual Growth 2022 to 2027	0.3%	1.0%	0.8%	0.8%
Historical Annual Growth 2010 to 2022	0.5%	0.6%	0.6%	1.1%
Race and Ethnicity				
2022 Estimated White	64.9%	64.7%	71.3%	74.7%
2022 Estimated Black or African American	7.7%	5.4%	5.3%	4.8%
2022 Estimated Asian or Pacific Islander	15.6%	19.5%	13.1%	10.8%
2022 Estimated American Indian or Native Alaskan	2.4%	1.7%	1.5%	1.3%
2022 Estimated Other Races	9.5%	8.7%	8.7%	8.4%
2022 Estimated Hispanic	7.6%	7.7%	7.2%	6.7%
Income				
2022 Estimated Average Household Income	\$91,932	\$65,981	\$78,349	\$84,651
2022 Estimated Median Household Income	\$75,402	\$51,639	\$61,533	\$68,970
2022 Estimated Per Capita Income	\$32,983	\$26,900	\$33,281	\$35,442
Education (Age 25+)				
2022 Estimated Elementary (Grade Level 0 to 8)	2.3%	1.8%	1.3%	1.5%
2022 Estimated Some High School (Grade Level 9 to 11)	2.8%	2.9%	3.0%	2.7%
2022 Estimated High School Graduate	19.1%	18.4%	17.5%	17.8%
2022 Estimated Some College	20.6%	18.8%	17.6%	17.4%
2022 Estimated Associates Degree Only	7.3%	7.2%	6.9%	6.8%
2022 Estimated Bachelors Degree Only	34.0%	29.6%	30.1%	28.9%
2022 Estimated Graduate Degree	14.0%	21.3%	23.6%	24.9%
Business				
2022 Estimated Total Businesses	115	1,762	3,159	3,703
2022 Estimated Total Employees	1,645	19,292	38,258	43,552
2022 Estimated Employee Population per Business	14.3	11.0	12.1	11.8
2022 Estimated Residential Population per Business	36.0	26.5	26.5	30.4

©2023, Sites USA, Chandler, Arizona, 480-491-1112 Demographic Source: Applied Geographic Solutions 11/2022, TIGER Geography - RS1



For more information:

Max Wasserstrom, CFA
816.412.8428
mwasserstrom@blockllc.com

Reid Koscic
816.878.6316
rkoscic@blockllc.com