

## Exclusive Property For Sale/Lease



### Excellent Location

- \$550,000 asking price
- 1.88 Acres
- 2,400 SF building for lease at \$1.88 PSF
- Zoned AG - Ability to rezone for multiple uses
- Surrounded by M-1 zoning
- Developer ready
- Prime location near the intersection of I-35 and 119th Street

### For more information:

Aaron M. Mesmer, CCIM  
816.412.5858  
amesmer@blockllc.com

John Mullen  
816.412.8461  
jmullen@blockllc.com

Jim Coyle  
913.269.1001  
jim@coyleproperties.com

The information contained in this marketing flyer is presented as general information only. Block Real Estate Services, LLC makes no representation as to its accuracy. This information is not intended as legal, financial or real estate advice and must not be relied upon as such. You should make your own inquiries, obtain independent inspections, and seek professional advice tailored to your specific circumstances before making any legal, financial or real estate decisions.



## Building Specifications

Land Size: 1.88 acres

Year Built: 1929

Property Taxes: \$3,342.39

Zoning: AG

For Lease: 2,400 SF

Lease Rate: \$4,500/mo



For more information:

Aaron M. Mesmer, CCIM  
816.412.5858  
amesmer@blockllc.com

John Mullen  
816.412.8461  
jmullen@blockllc.com

Jim Coyle  
913.269.1001  
jim@coyleproperties.com



11515 South Black Bob Road

Olathe, Kansas 66162

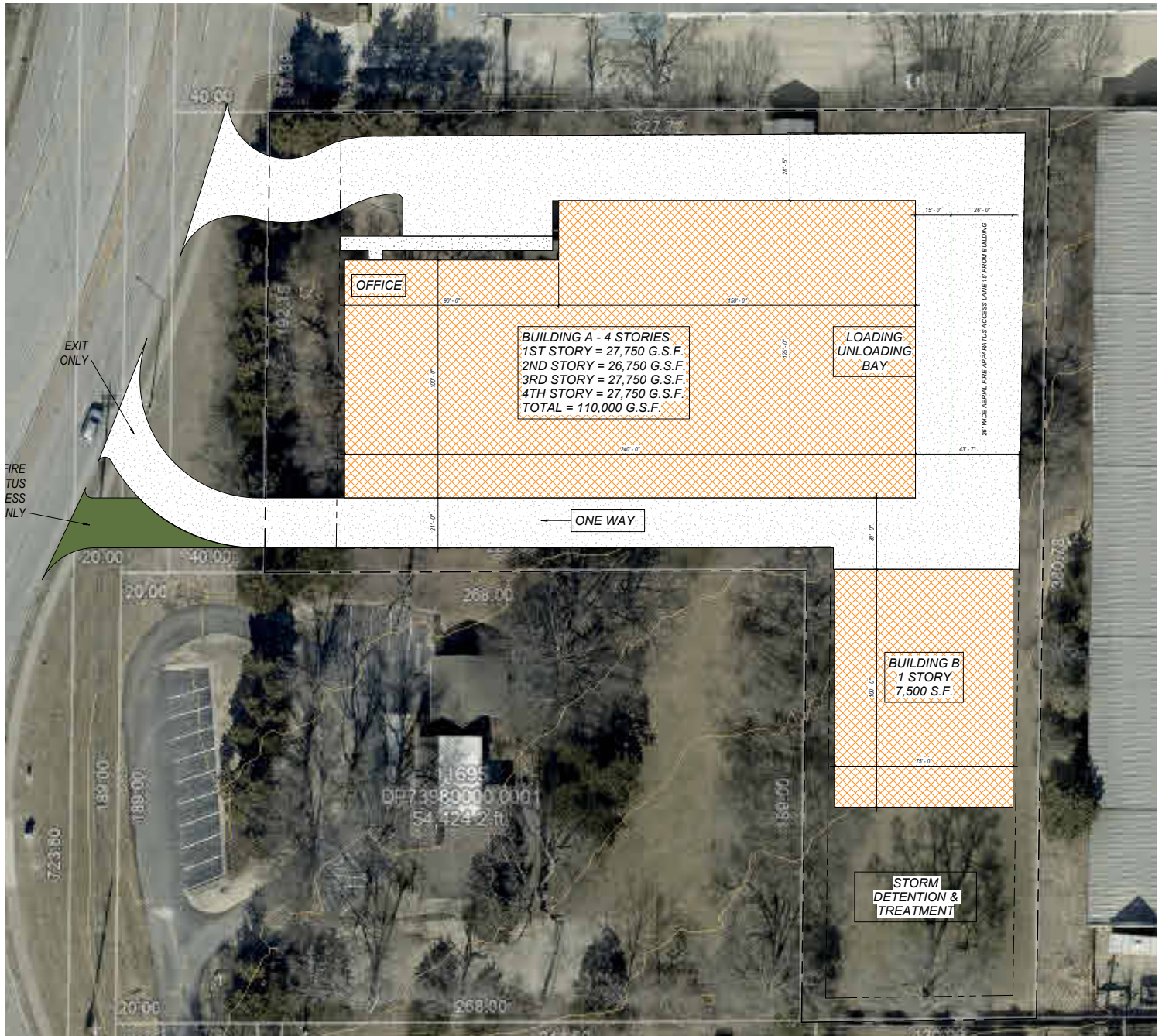
For Sale/Lease

Building Photos





## Potential Self-Storage Facility Plan



For more information:

Aaron M. Mesmer, CCIM  
816.412.5858  
amesmer@blockllc.com

John Mullen  
816.412.8461  
jmullen@blockllc.com

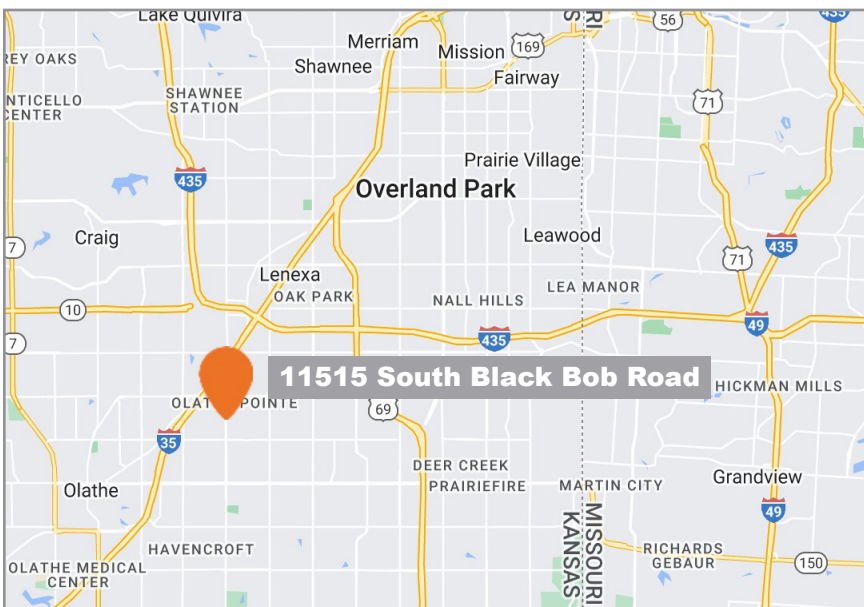
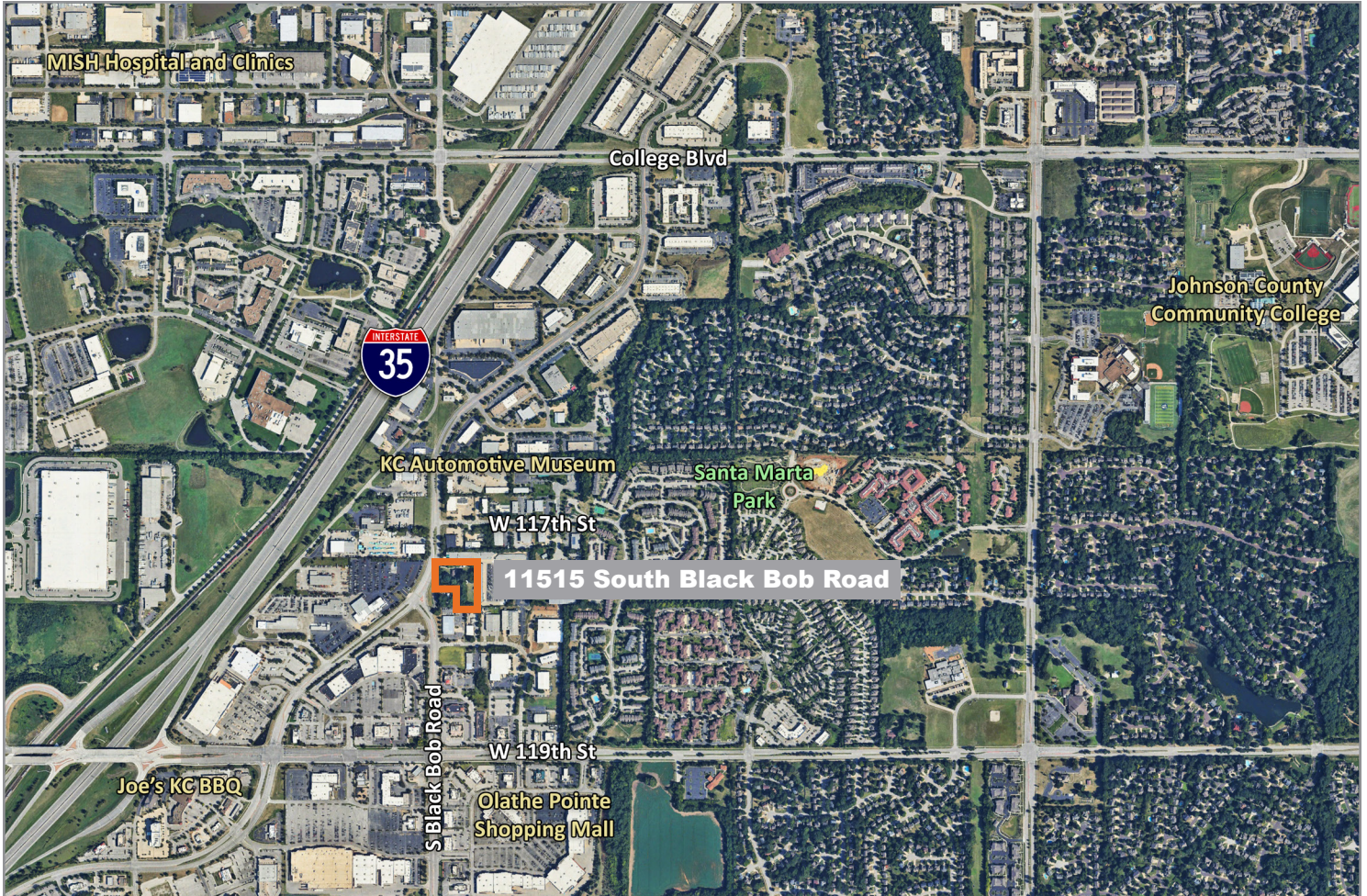
Jim Coyle  
913.269.1001  
jim@coyleproperties.com



# 11515 South Black Bob Road

Olathe, Kansas 66162

# For Sale/Lease



For more information:

Aaron M. Mesmer, CCIM  
816.412.5858  
amesmer@blockllc.com

John Mullen  
816.412.8461  
jmulen@blockllc.com

Jim Coyle  
913.269.1001  
jim@coyleproperties.com

4622 Pennsylvania Ave., Suite 700  
Kansas City, MO 64112  
816.756.1400 | www.BLOCKLLC.com

