



Adjacent to LPKC Southport Future Expansion!

- 38.26± acres zoned RUR (Planned Industrial)
- Includes 15,000± SF warehouse, 3,500± SF barn, 1,500± SF garage and 3,500± SF living quarters
- Large concrete area for outside storage/parking
- [Link to Additional Property Photos](#)

For more information:

Scott Cordes
816.932.5594
scordes@blockllc.com

Christian Wead
816.412.8472
cwead@blockllc.com

The information contained in this marketing flyer is presented as general information only. Block Real Estate Services, LLC makes no representation as to its accuracy. This information is not intended as legal, financial or real estate advice and must not be relied upon as such. You should make your own inquiries, obtain independent inspections, and seek professional advice tailored to your specific circumstances before making any legal, financial or real estate decisions.

Building Specifications

Building Size:	• Warehouse:	15,000±
	• Lean-To:	3,125±
	• Bonus Mezzanine:	5,000±
	• Bonus Basement:	2,500±
	• Barn:	3,500±
	• Garage:	1,500±
	• Living Quarters:	3,500±
• Total:	23,500± SF	

Lot Size: 38.26± acres

Zoning: RUR, Planned Industrial

Loading:

- Warehouse: (1) 50' x 16' Drive-In, (1) 16' x 8' Drive-In
- Barn: 4 Drive-Ins, 1 dock
- Garage: 1 Drive-In

Warehouse Clear Height: 13'-22'

Property Taxes (2023 Estimated): \$13,725.84

Parcel Numbers:

- 0462061302002001000
- 0462061302002002000

For more information:

Scott Cordes
816.932.5594
scordes@blockllc.com

Christian Wead
816.412.8472
cwead@blockllc.com

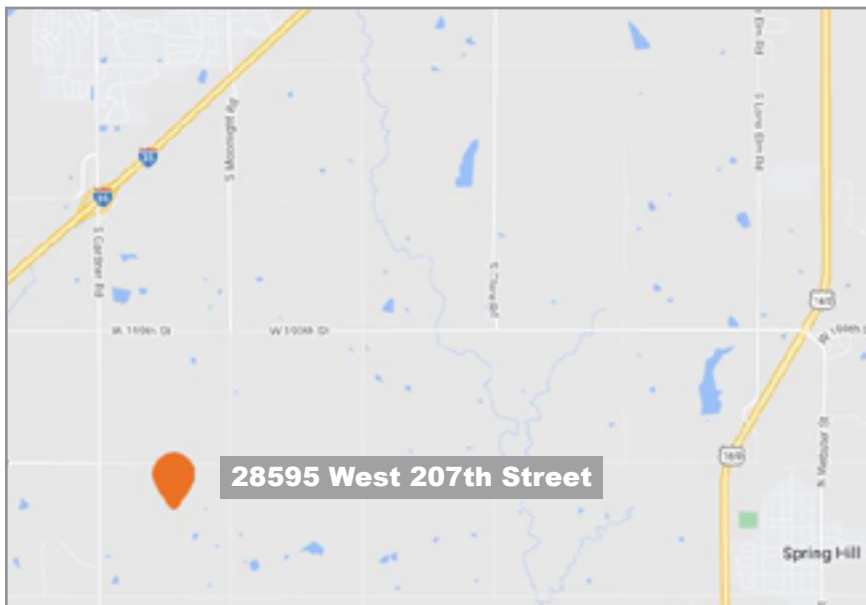
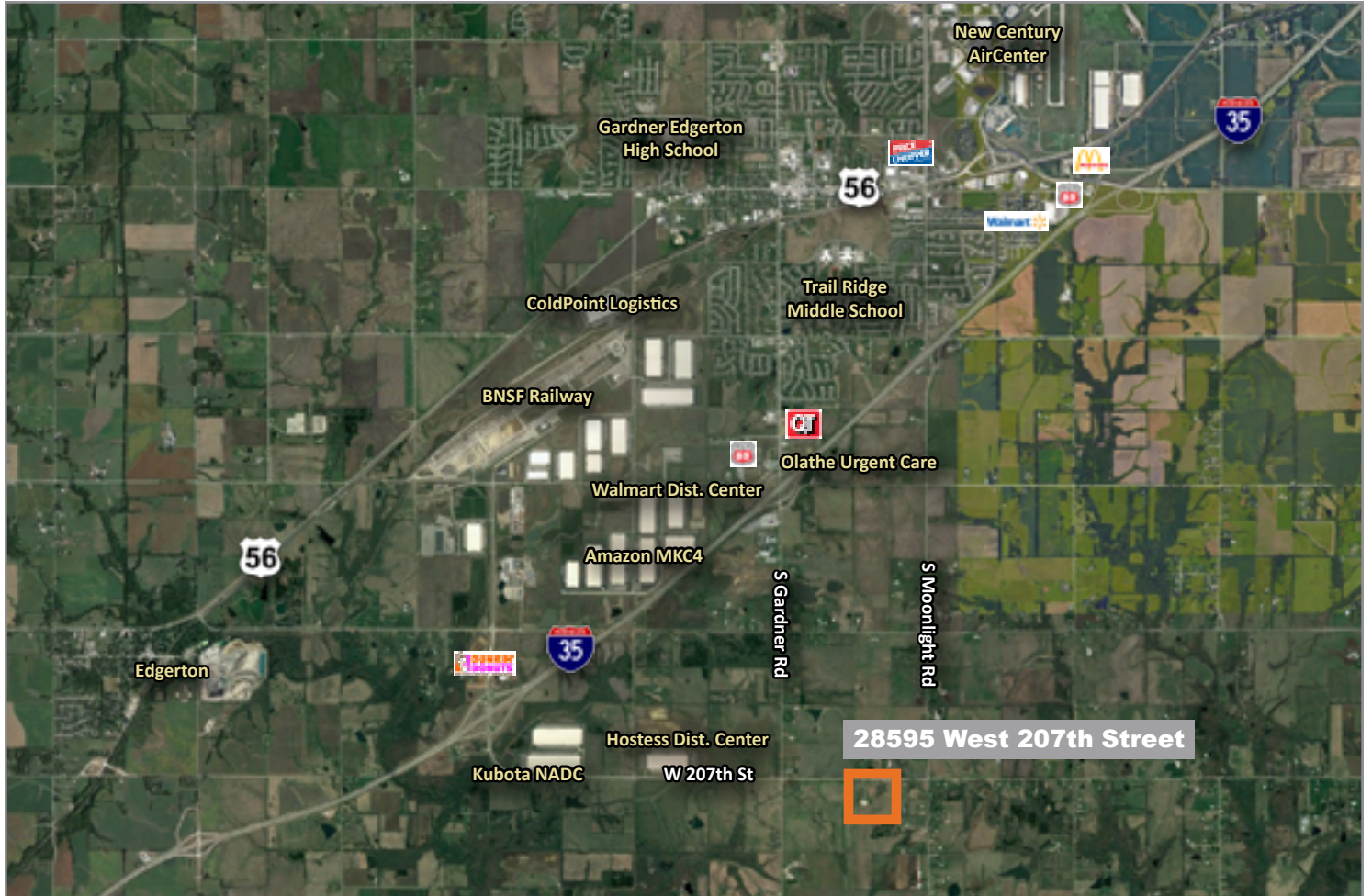
Interior Photos



28595 West 207th Street

Gardner, Kansas 66030

For Sale



For more information:

Scott Cordes
816.932.5594
scordes@blockllc.com

Christian Wead
816.412.8472
cwead@blockllc.com