

Newly Renovated Office Space For Lease



Shawnee West Office Park

- 1,362 square feet
- 3 offices + conference area
- Side Entry
- 36 Parking Spaces
- All offices on windows
- Immediate Occupancy
- Located at Shawnee Mission Parkway and Monticello Road
- Signage available

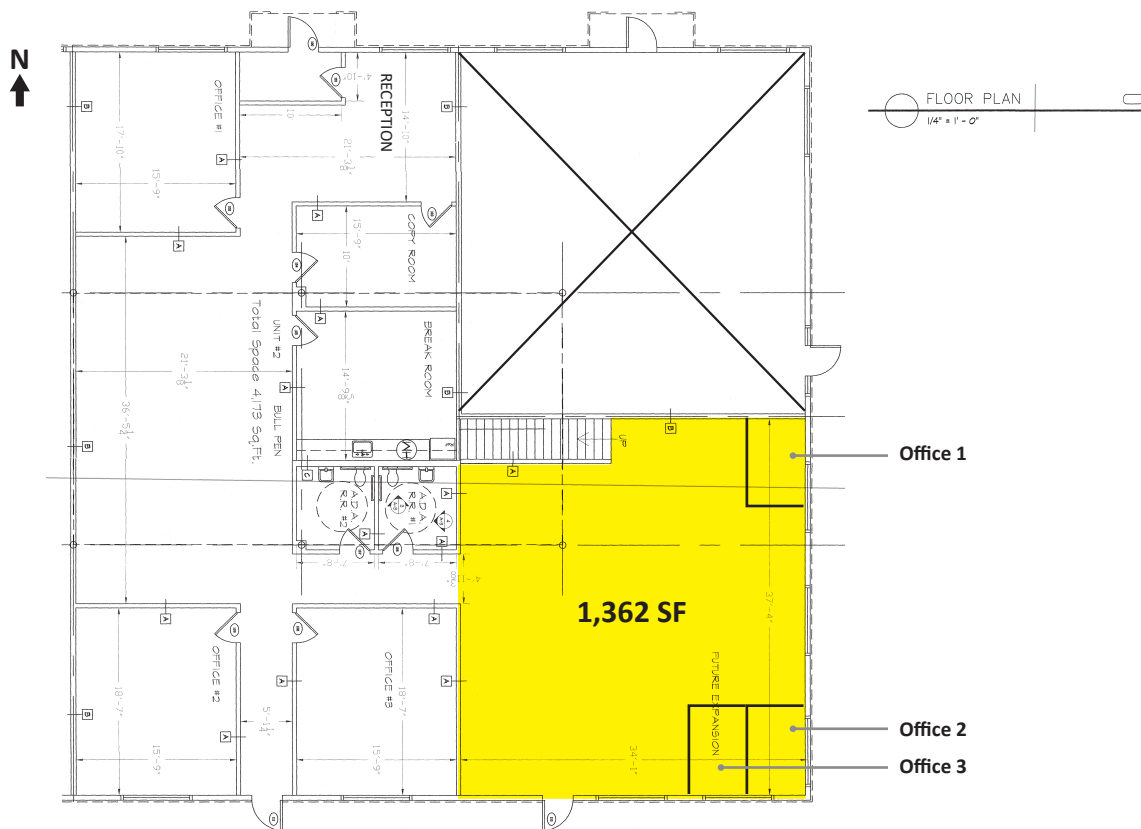
For more information:

Don Gessen, CCIM
816.932.5574
dgessen@blockllc.com

The information contained in this marketing flyer is presented as general information only. Block Real Estate Services, LLC makes no representation as to its accuracy. This information is not intended as legal, financial or real estate advice and must not be relied upon as such. You should make your own inquiries, obtain independent inspections, and seek professional advice tailored to your specific circumstances before making any legal, financial or real estate decisions.

Specifications

Lease Price:	\$22.00 PSF Full Service (less janitorial)
Size:	1,362 Square Feet
Parking:	36 Cars
Year Built:	2004, Renovated 2023
Construction Type:	Wood Frame
Amenities:	Conference room
Note:	Ready For Occupancy including some office furniture



For more information: Don Gessen, CCIM | 816.932.5574 | dgessen@blockllc.com

Demographics

Lat/Lon: 39.0075/-94.8361

21636 Midland Dr Shawnee, KS 66218	1 mi radius	3 mi radius	5 mi radius
Population			
2022 Estimated Population	5,724	31,256	82,683
2027 Projected Population	5,970	33,317	86,375
2020 Census Population	5,577	30,806	81,811
2010 Census Population	4,330	25,952	68,257
Projected Annual Growth 2022 to 2027	0.9%	1.3%	0.9%
Historical Annual Growth 2010 to 2022	2.7%	1.7%	1.8%
Households			
2022 Estimated Households	1,947	10,619	30,972
2027 Projected Households	2,086	11,637	32,994
2020 Census Households	1,882	10,414	30,502
2010 Census Households	1,452	8,681	24,862
Projected Annual Growth 2022 to 2027	1.4%	1.9%	1.3%
Historical Annual Growth 2010 to 2022	2.8%	1.9%	2.0%
Age			
2022 Est. Population Under 10 Years	17.0%	16.7%	14.1%
2022 Est. Population 10 to 19 Years	14.5%	14.8%	14.1%
2022 Est. Population 20 to 29 Years	9.1%	8.5%	11.0%
2022 Est. Population 30 to 44 Years	29.1%	27.2%	23.2%
2022 Est. Population 45 to 59 Years	17.2%	17.6%	19.6%
2022 Est. Population 60 to 74 Years	11.3%	12.5%	14.6%
2022 Est. Population 75 Years or Over	1.8%	2.8%	3.4%
2022 Est. Median Age	34.5	35.9	37.1
Marital Status & Gender			
2022 Est. Male Population	50.2%	50.3%	49.8%
2022 Est. Female Population	49.8%	49.7%	50.2%
2022 Est. Never Married	19.8%	20.2%	24.3%
2022 Est. Now Married	74.2%	71.1%	64.2%
2022 Est. Separated or Divorced	5.7%	7.0%	8.6%
2022 Est. Widowed	0.4%	1.7%	2.9%
Income			
2022 Est. HH Income \$200,000 or More	28.1%	24.3%	19.5%
2022 Est. HH Income \$150,000 to \$199,999	14.9%	14.4%	11.7%
2022 Est. HH Income \$100,000 to \$149,999	23.0%	23.5%	22.3%
2022 Est. HH Income \$75,000 to \$99,999	11.8%	14.0%	14.3%
2022 Est. HH Income \$50,000 to \$74,999	15.7%	12.7%	14.4%
2022 Est. HH Income \$35,000 to \$49,999	1.2%	5.3%	6.9%
2022 Est. HH Income \$25,000 to \$34,999	-	1.9%	3.9%
2022 Est. HH Income \$15,000 to \$24,999	1.8%	1.9%	3.4%
2022 Est. HH Income Under \$15,000	3.6%	2.0%	3.5%
2022 Est. Average Household Income	\$121,736	\$141,212	\$128,244
2022 Est. Median Household Income	\$145,332	\$133,200	\$115,259
2022 Est. Per Capita Income	\$41,411	\$47,978	\$48,071
2022 Est. Total Businesses	201	745	2,087
2022 Est. Total Employees	2,063	7,607	25,588

21636 A - Midland Drive

Shawnee, Kansas 66218

For Lease



For more information: Don Gessen, CCIM | 816.932.5574 | dgessen@blockllc.com

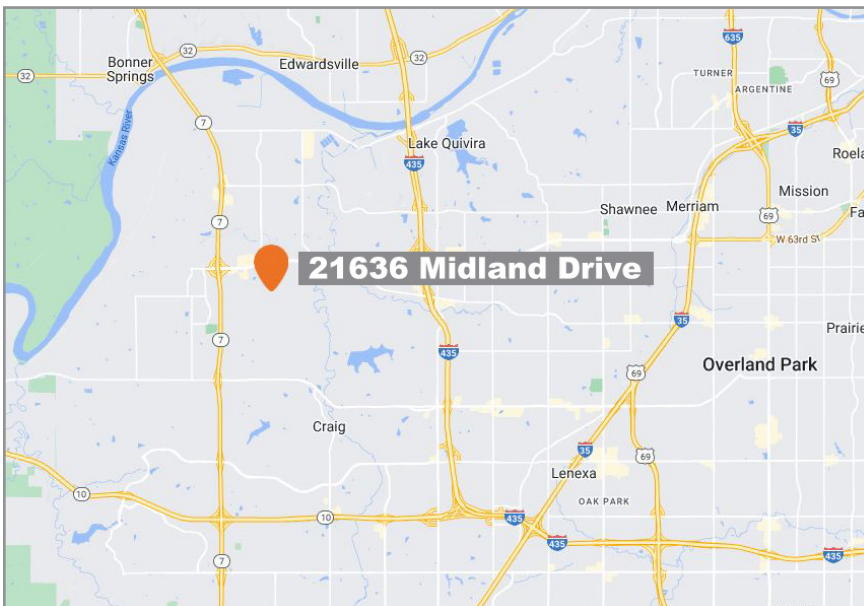
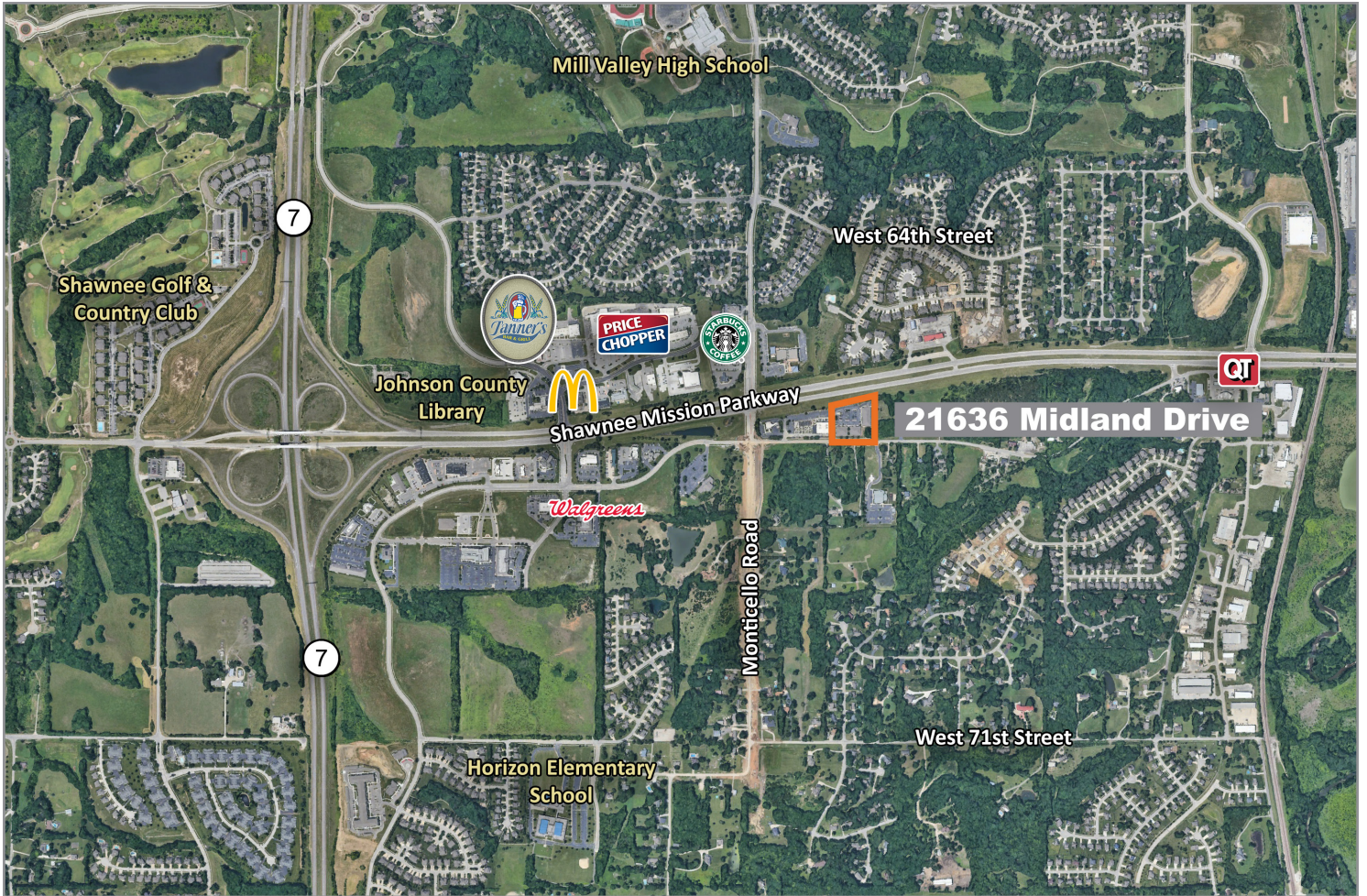
4622 Pennsylvania Ave., Suite 700
Kansas City, MO 64112
816.756.1400 | www.BLOCKLLC.com

BLOCK
REAL ESTATE SERVICES, LLC

21636 A - Midland Drive

Shawnee, Kansas 66218

For Lease



For more information:

Don Gessen, CCIM
816.932.5574
dgessen@blockllc.com