

Adaptive Reuse Opportunity



Adaptive Reuse & Infill Opportunity

- Scarritt Elementary School - Closed 2010.
- 59,840 SF Building on a large 2.25 acre site.
- Near highways 71, I-70, and Cliff Drive Scenic Parkway.
- Incredible adaptive reuse opportunity on a large parcel.
- Proximate to Kansas City Museum, Kessler Park, and Kansas City University.

For more information:

Christel Highland
816.410.9584
chighland@blockllc.com

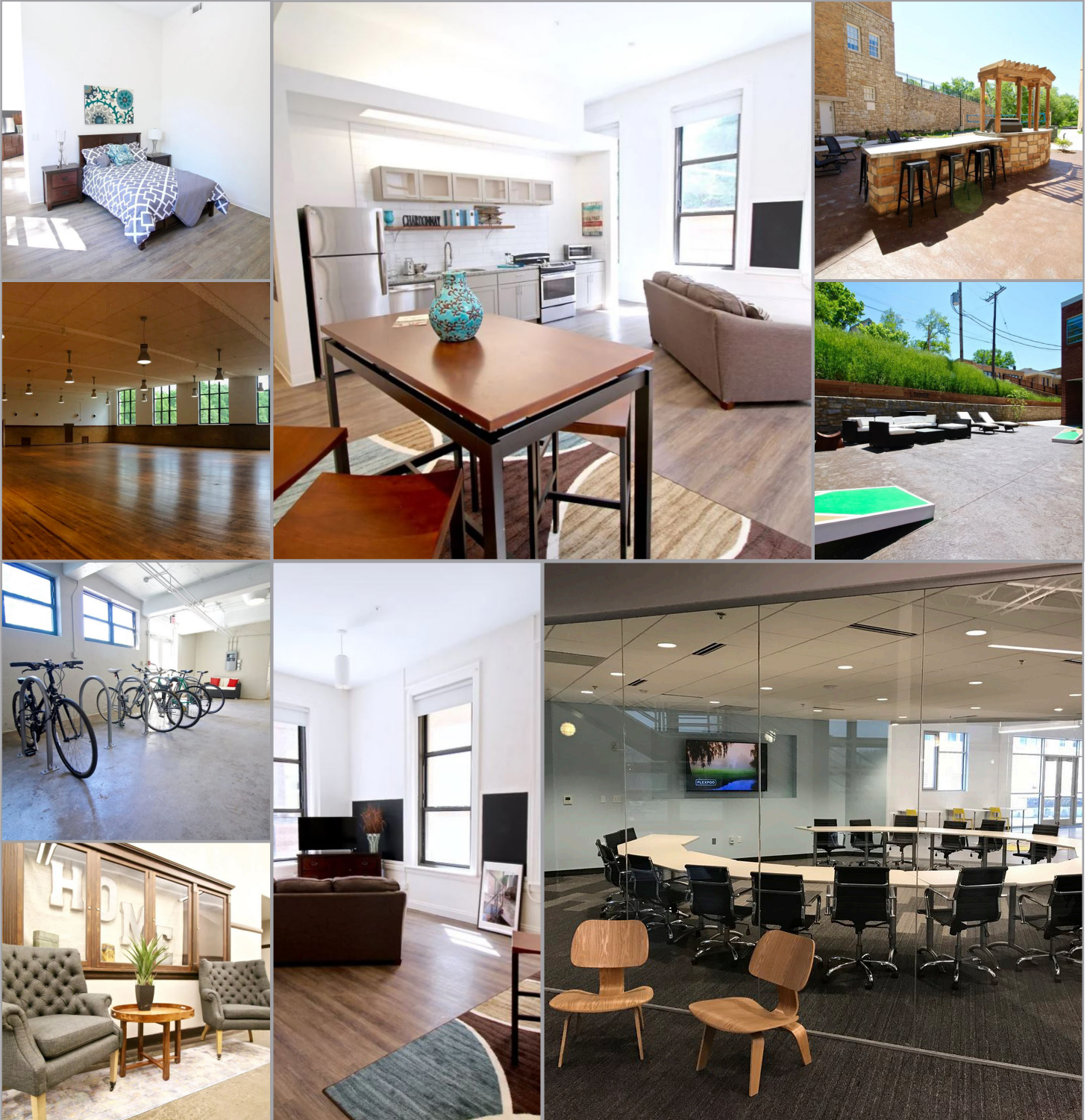
Aaron M. Mesmer, CCIM
816.412.5858
amesmer@blockllc.com

The information contained in this marketing flyer is presented as general information only. Block Real Estate Services, LLC makes no representation as to its accuracy. This information is not intended as legal, financial or real estate advice and must not be relied upon as such. You should make your own inquiries, obtain independent inspections, and seek professional advice tailored to your specific circumstances before making any legal, financial or real estate decisions.

Building Specifications

Square Feet Available:	59,840 SF
Acreage:	2.25±
Property Type:	Adaptive reuse, and infill opportunity
Year Built:	1926, 1962
Year Closed:	2010
Zoning:	R-2.5
Neighborhood:	Scarritt Renaissance
Number of Floors:	3
Special Features:	Opportunity zone qualified, gym, cafeteria, and elevator

Completed Repurposing Projects



Images are a courtesy of Switzer Lofts Apartments, and Plexpod Westport

Scarritt - Kansas City Public Schools

3509 Anderson Avenue, Kansas City, Missouri 64124

For Sale



For more information:

Christel Highland

816.410.9584

chighland@blockllc.com

Aaron M. Mesmer, CCIM

816.412.5858

amesmer@blockllc.com