

Tour November 19, 2024



Tour & Call For Offers

- Tour November 19th at 10 a.m.
- Scarritt Elementary School - Closed 2010.
- 59,840 SF Building on a large 2.25 acre site.
- Near highways 71, I-70, I-35, and Cliff Drive Scenic Parkway.
- Incredible adaptive reuse opportunity on a large parcel.
- Proximate to Kansas City Museum, Kessler Park, and Kansas City University.
- [Click Here To Register For Touring](#)

For more information:

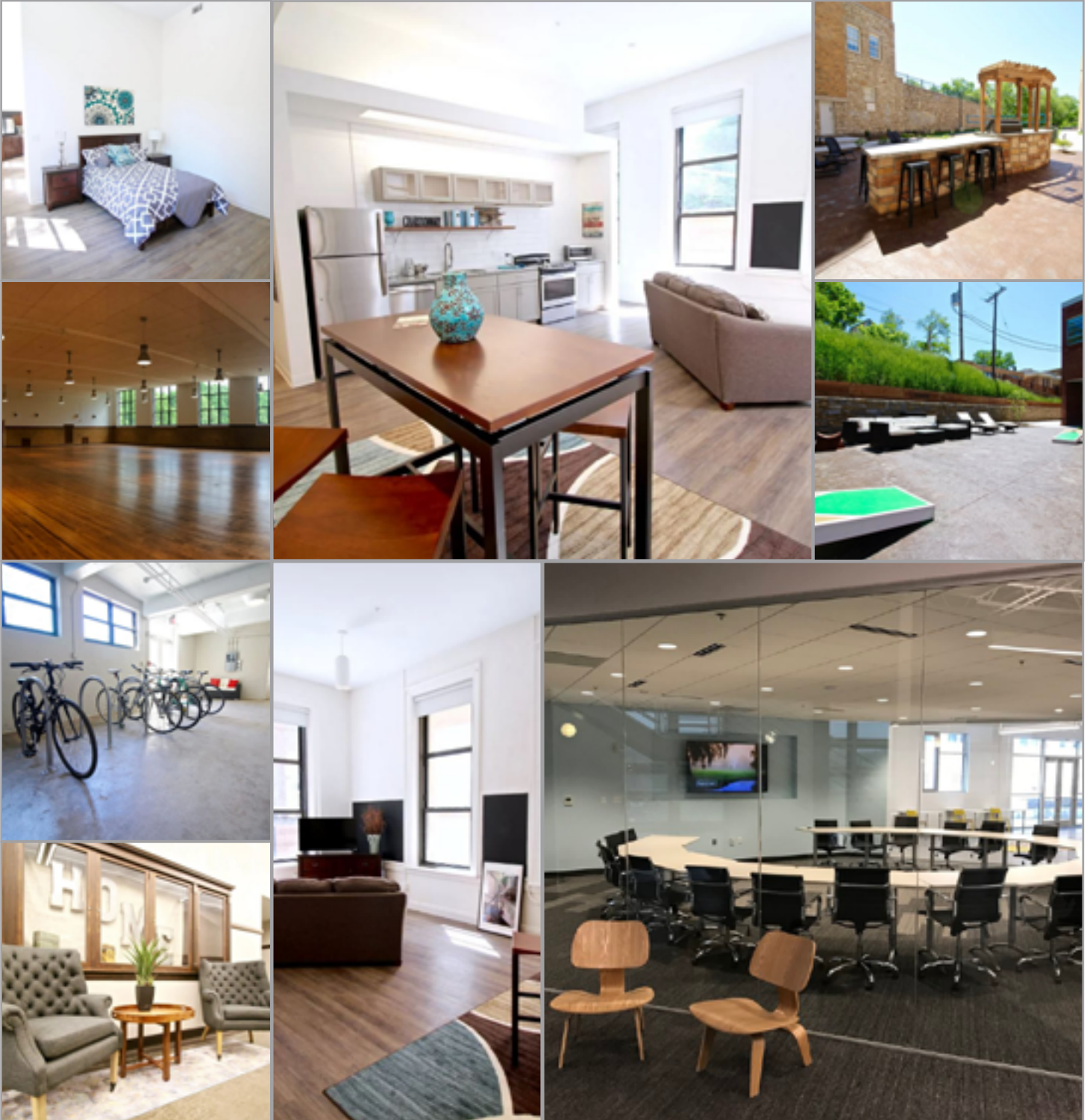
Christel Highland
816.410.9584
chighland@blockllc.com

Aaron M. Mesmer, CCIM
816.412.5858
amesmer@blockllc.com

Building Specifications

Square Feet Available:	59,840 SF
Acreage:	2.25±
Property Type:	Adaptive reuse, and infill opportunity
Year Built:	1926, 1962
Year Closed:	2010
Zoning:	R-2.5
Neighborhood:	Scarritt Renaissance
Number of Floors:	3
Special Features:	Opportunity zone qualified, gym, cafeteria, and elevator

Completed Repurposing Projects



Images are a courtesy of Switzer Lofts Apartments, and Plexpod Westport

Scarritt - Kansas City Public Schools

3509 Anderson Avenue, Kansas City, Missouri 64124

For Sale



For more information:

Christel Highland

816.410.9584

chighland@blockllc.com

Aaron M. Mesmer, CCIM

816.412.5858

amesmer@blockllc.com