

**Proposal Deadline: May 15th 2026**



## Tour & Call For Offers

- Tour: Thursday, April 16th at 10:00 AM
- Scarritt Elementary School - Closed 2010.
- 59,840 SF Building on a large 2.25 acre site.
- Near highways 71, I-70, I-35, and Cliff Drive Scenic Parkway.
- Incredible adaptive reuse opportunity on a large parcel.
- Proximate to Kansas City Museum, Kessler Park, and Kansas City University.

## For more information:

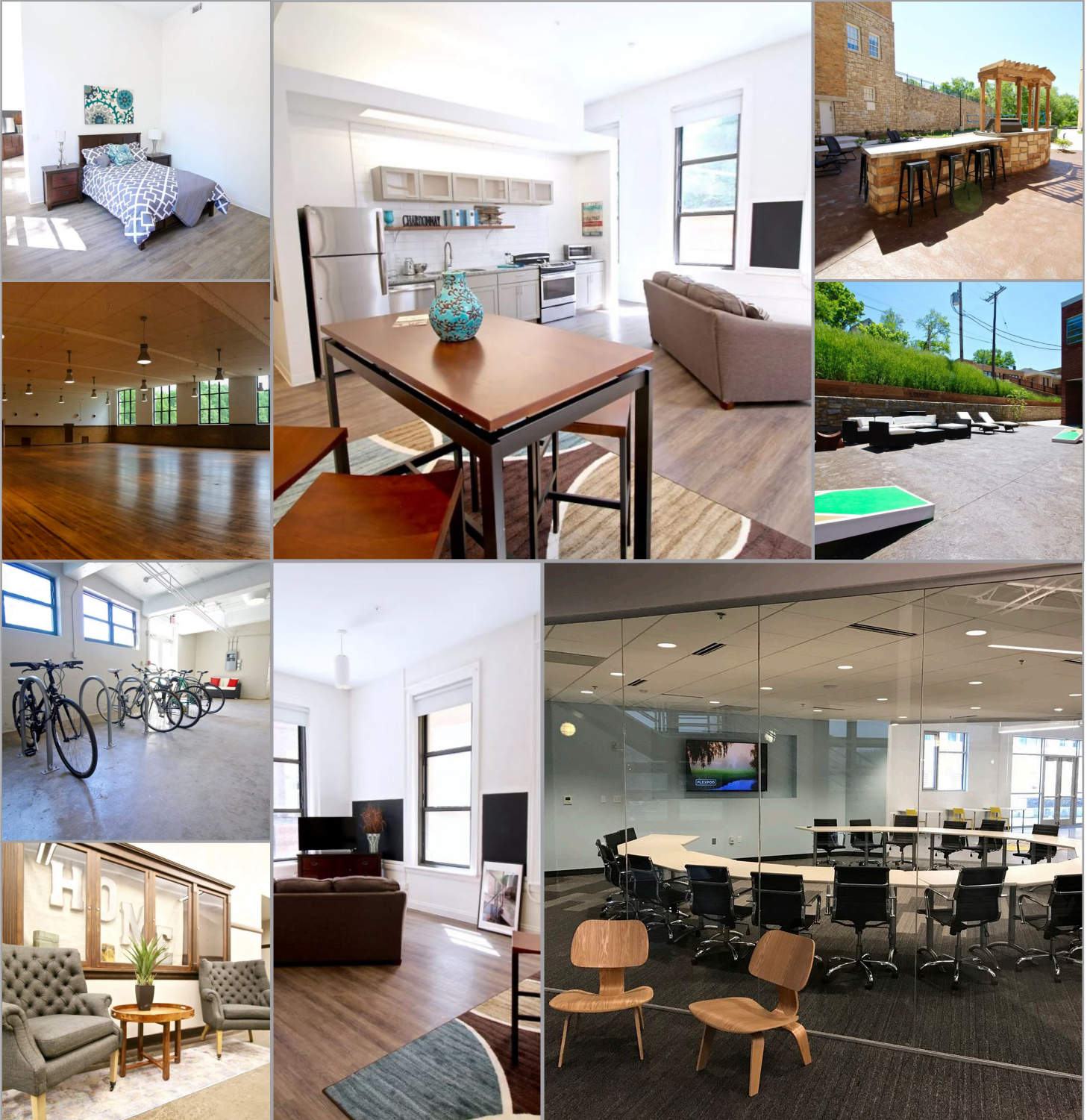
Christel Highland  
816.410.9584  
chighland@blockllc.com

Aaron M. Mesmer, CCIM  
816.412.5858  
amesmer@blockllc.com

## Building Specifications

Square Feet Available:	59,840 SF
Acreage:	2.25±
Property Type:	Adaptive reuse, and infill opportunity
Year Built:	1926, 1962
Year Closed:	2010
Zoning:	R-2.5
Neighborhood:	Scarritt Renaissance
Number of Floors:	3
Special Features:	Opportunity zone qualified, gym, cafeteria, and elevator

## Completed Repurposing Projects



Images are a courtesy of Switzer Lofts Apartments, and Plexpod Westport

# Scarritt - Kansas City Public Schools

3509 Anderson Avenue, Kansas City, Missouri 64124

# For Sale



For more information:

Christel Highland

816.410.9584

[chighland@blockllc.com](mailto:chighland@blockllc.com)

Aaron M. Mesmer, CCIM

816.412.5858

[amesmer@blockllc.com](mailto:amesmer@blockllc.com)