

Westview 63

8801 East 63rd Street, Raytown, Missouri 64133

For Lease



Affordable Office Space

- 910 and 950 square feet corner suites
- Quick highway access to the entire metro
- Flexible lease terms
- Newly renovated common areas
- Well maintained for professional image
- Superior Exposure
- No E-Tax

For more information:

Don Gessen, CCIM

816.932.5574

816.616.8895

dgessen@blockllc.com

The information contained in this marketing flyer is presented as general information only. Block Real Estate Services, LLC. makes no representation as to its accuracy.

This information is not intended as legal, financial or real estate advice and must not be relied upon as such. You should make your own inquiries, obtain independent inspections, and seek professional advice tailored to your specific circumstances before making any legal, financial or real estate decisions.

4622 Pennsylvania Avenue, Suite 700
Kansas City, MO 64112
816.756.1400 | www.BLOCKLLC.com

BLOCK
REAL ESTATE SERVICES, LLC

Building Specifications

Space Available: 910 SF and 950 SF

Building Size: 14,000 SF

Rent: Call for pricing

Available Suite: Suites 207 and 208

Parking: 52 spaces non-reserved
3.7/1,000 ratio
Recently resurfaced

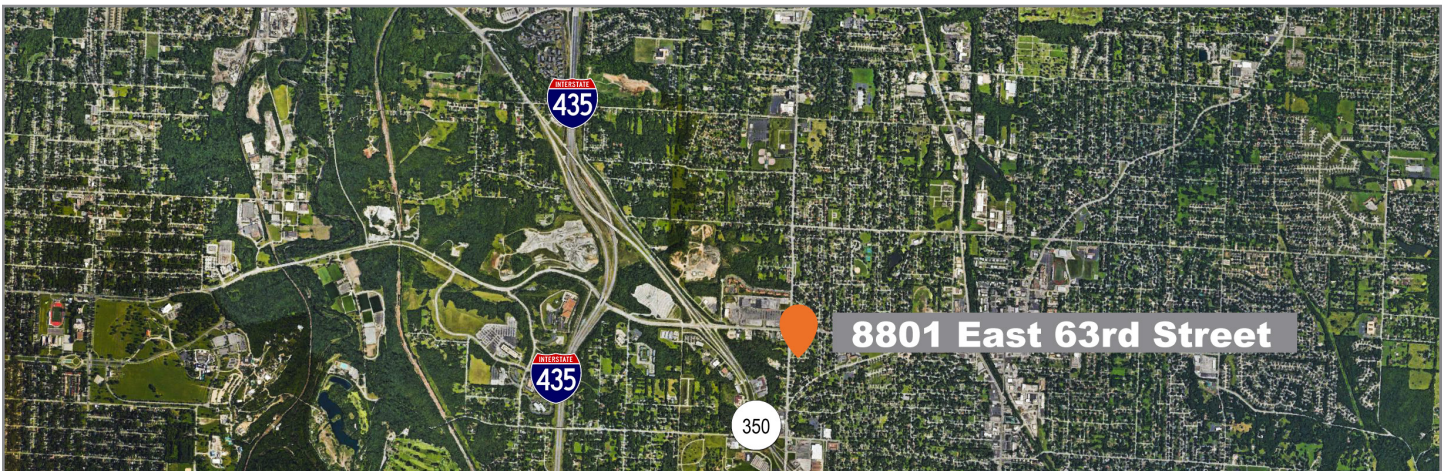
Year Built: 1984 (Renovated 2019)

Stories: 2

Land Area: 0.8 acres

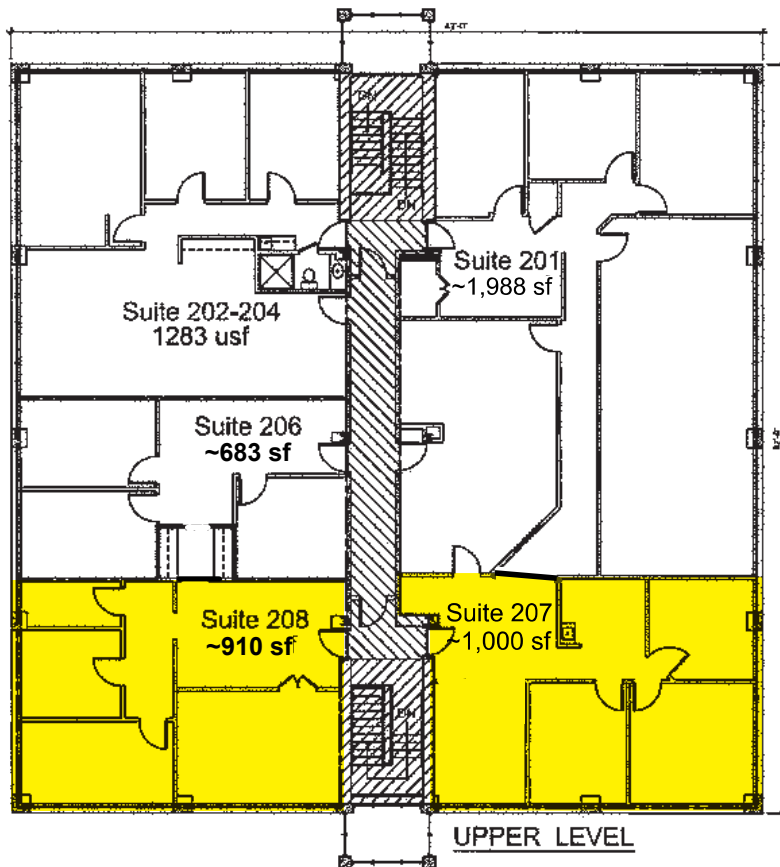
Construction: Masonry

Traffic Counts: 14,818 cars per day on Blue Ridge Cutoff
11,752 cars per day on East 63rd Street





For more information: Don Gessen, CCIM | 816.932.5574 | 816.616.8895 | dgessen@blockllc.com

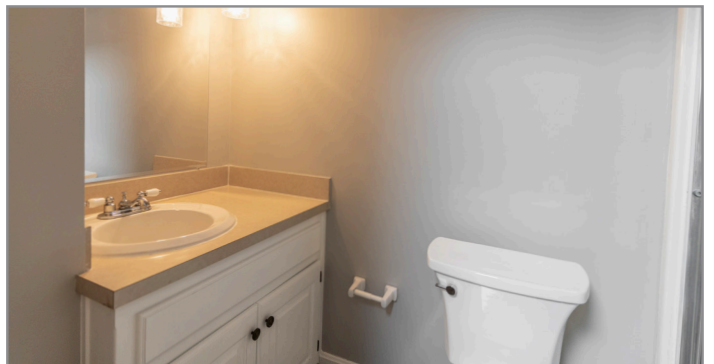
Second Floor Plan



UPPER LEVEL FLOOR

USUABLE AREA (ALL 5 TENANTS)	5,864 USF
 VERTICAL STAIR PENETRATIONS 163 + 170	333 SF
 COMMON AREA	311 SF
RENTABLE AREA = 5864 SF + 311 SF =	6175 RSF
FLOOR R/U RATIO = 6175 RSF / 5864 USF =	1.05 (1.053)

Suite 202-204 Photos



Suite 207 Photos



Westview 63

8801 East 63rd Street, Raytown, Missouri 64133

For Lease

Suite 208 Photos



Westview 63

8801 East 63rd Street, Raytown, Missouri 64133

For Lease

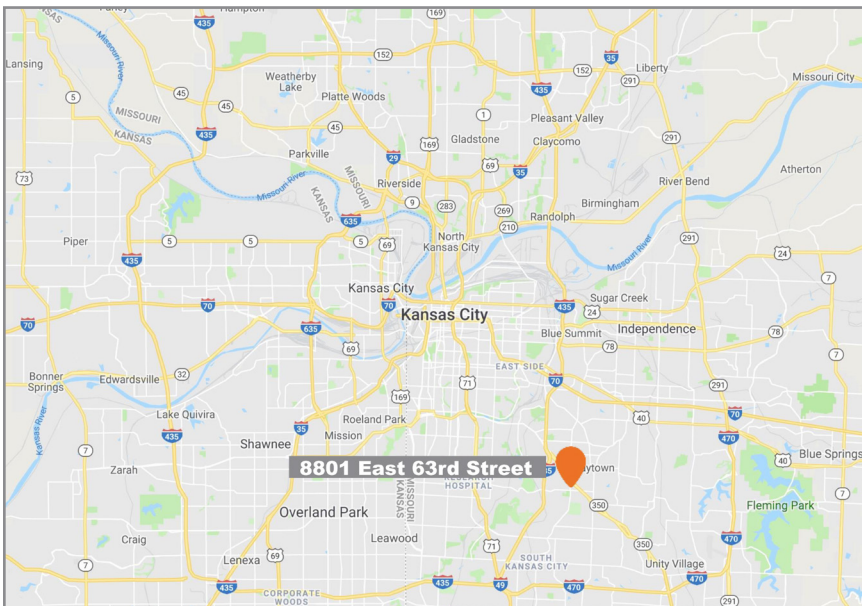
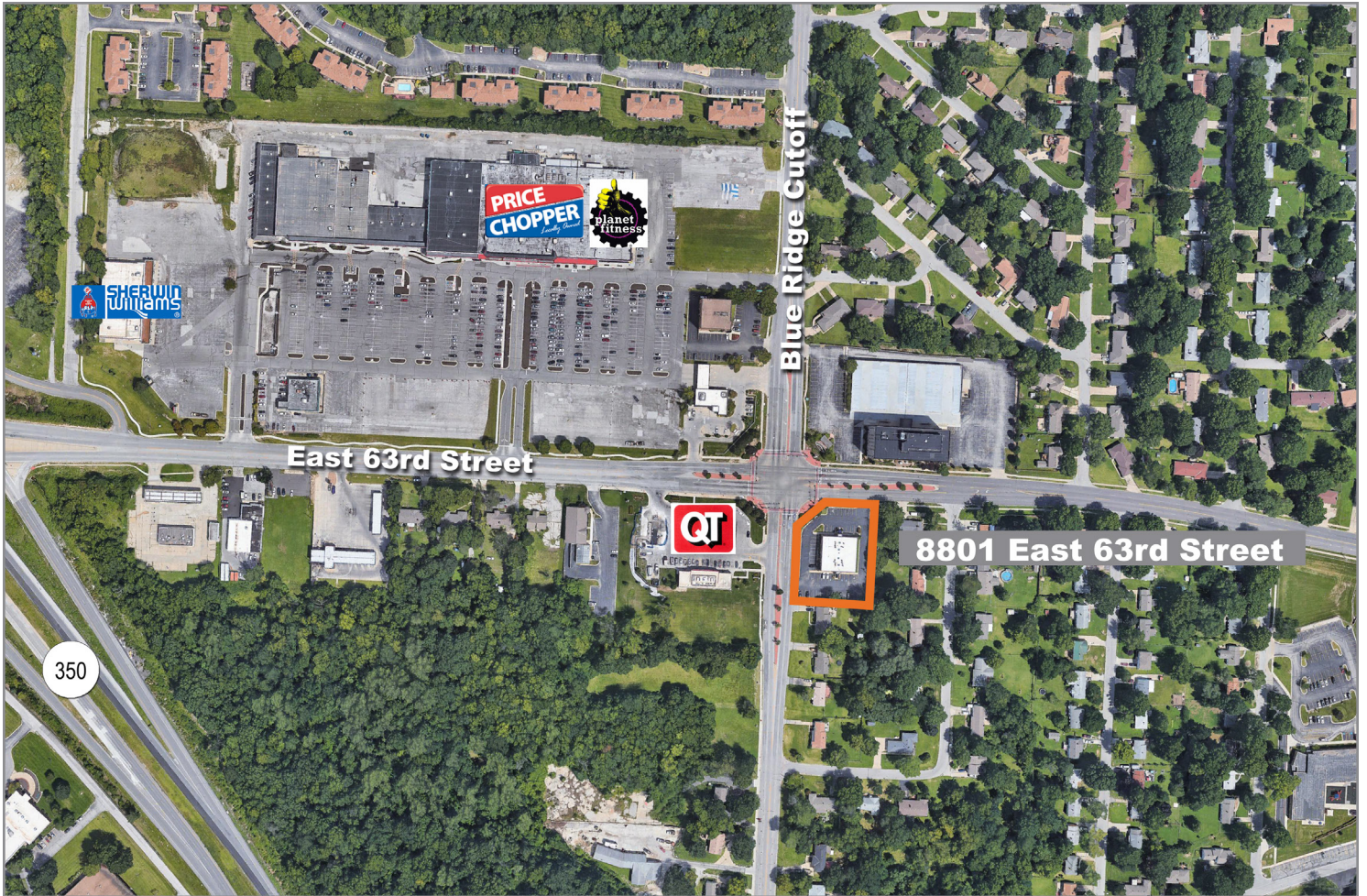
Exterior Photos



Westview 63

8801 East 63rd Street, Raytown, Missouri 64133

For Lease



For more information:

Don Gessen, CCIM

816.932.5574

816.616.8895

dgessen@blockllc.com

4622 Pennsylvania Avenue, Suite 700
Kansas City, MO 64112
816.756.1400 | www.BLOCKLLC.com

BLOCK
REAL ESTATE SERVICES, LLC