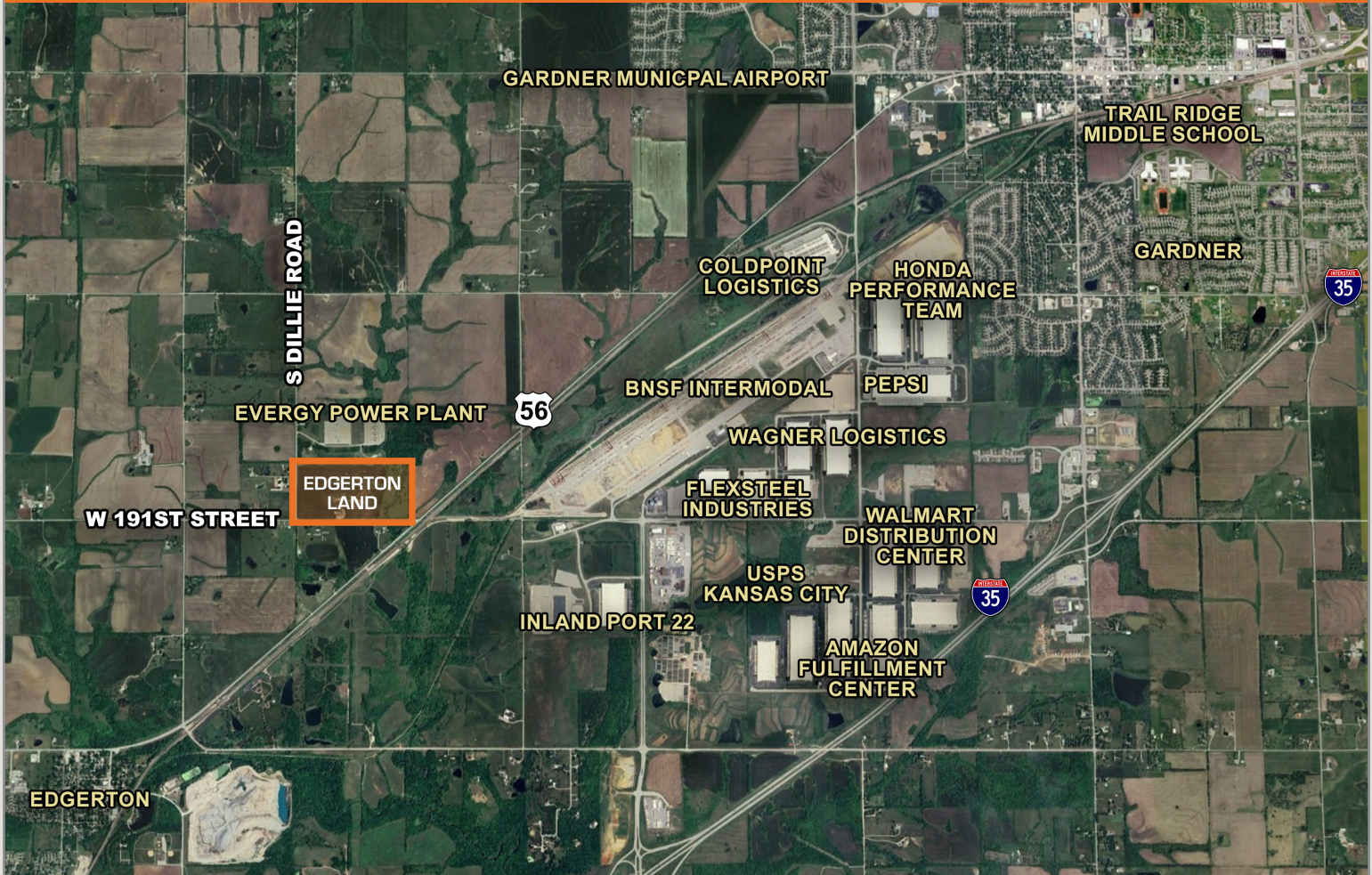


Opportunity for Low Single Family Development 78+ Acres



Residential Development Land for Sale - Will Divide

- 78+ Acres - \$1.50 PSF
- Edgerton comprehensive plan calls for low density residential
- Great location, located just north of Edgerton, Kansas and west of Gardner, Kansas, the fastest growing city in the Kansas City metro area
- Access to US-56 Highway via W 191st Street
- Access to great schools: Gardner-Edgerton school district

For More Information:

John Mullen

816.412.8461

jmullen@blockllc.com

Aaron M. Mesmer, CCIM

816.412.5858

amesmer@blockllc.com

The information contained in this marketing flyer is presented as general information only. Block Real Estate Services, LLC makes no representation as to its accuracy. This information is not intended as legal, financial or real estate advice and must not be relied upon as such. You should make your own inquiries, obtain independent inspections, and seek professional advice tailored to your specific circumstances before making any legal, financial or real estate decisions.

Land Specifications

Address: NEC 191st Street & Dillie Road

Total Size: 78.31± Acres

Tax Property ID: BF221432-4003

Entitlement: Agricultural

Access: The property has direct access to 191st Street and adjacent access to US-56 Highway.

Visibility: The Property is visible from its frontage on 191st Street

Sewer: City of Edgerton

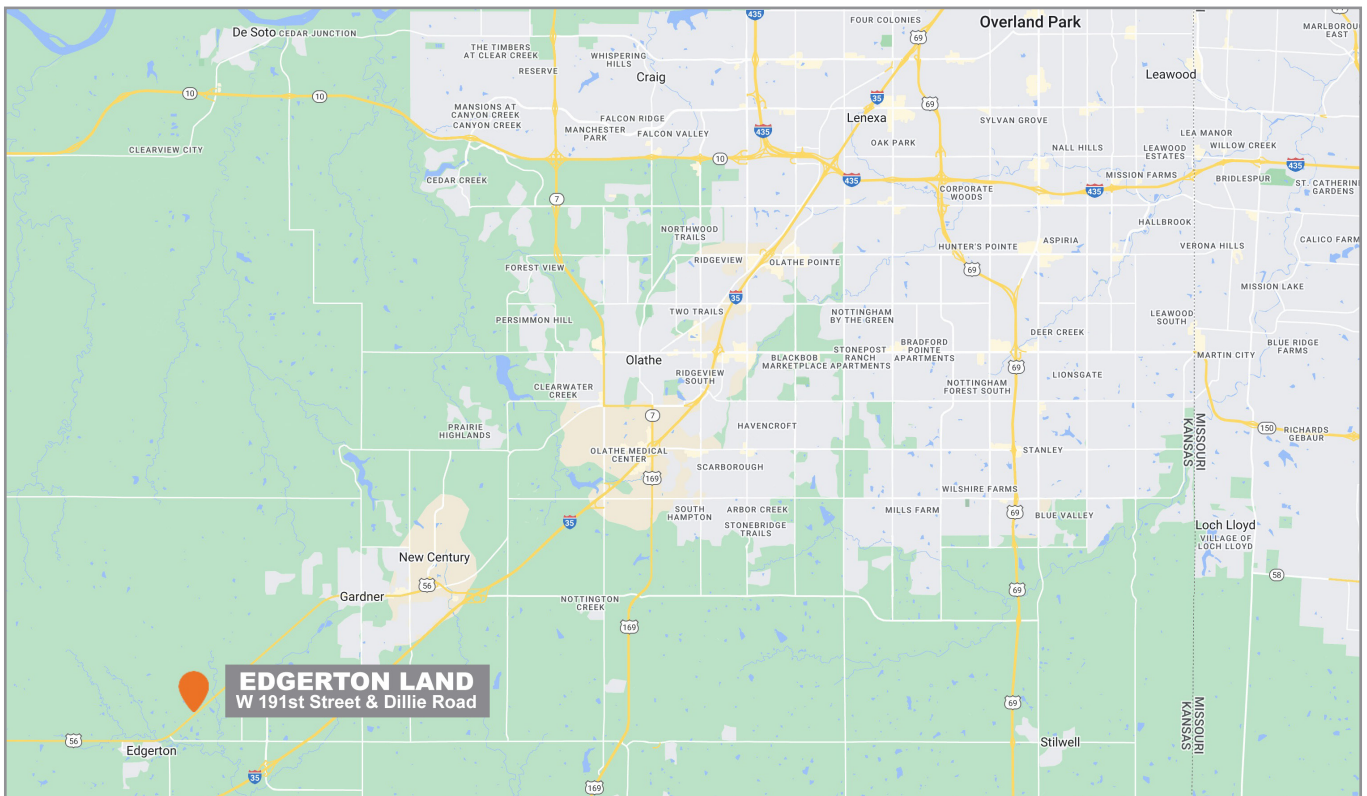
Water: Johnson Rural Water District

Natural Gas: Kansas Gas Service

Electric: Evergy

Cable & Internet: Brightspeed, Hughesnet, MCC Broadband, Starlink

Specifications



FOR MORE INFORMATION:

Aaron M. Mesmer, CCIM | 816.412.5858 | amesmer@blockllc.com | John Mullen | 816.412.8461 | jmullen@blockllc.com