

Office/Retail Redevelopment Building For Sale



Office/Retail Redevelopment Building For Sale

- Prime Re-Development location
- Numerous Retail and Businesses within walking distance
- Minutes from the Plaza
- Rear Parking available

For more information:

Reid Kosic
816.878.6316
rkosic@blockllc.com

Riley Rader
816.878.6316
rrader@blockllc.com

The information contained in this marketing flyer is presented as general information only. Block Real Estate Services, LLC. makes no representation as to its accuracy. This information is not intended as legal, financial or real estate advice and must not be relied upon as such. You should make your own inquiries, obtain independent inspections, and seek professional advice tailored to your specific circumstances before making any legal, financial or real estate decisions.

Building Specifications

Property Type: Office

Square Feet: 4017 SF

Offices: 10

Conference Rooms: 1

Break Rooms: 1

Bathrooms: 2

Storage Rooms: 2

Renovated: 2008

ADA Accessible: Yes

Rear Parking: 7 Spots

For more information:

Reid Kasic | 816.878.6316 | rkasic@blockllc.com | Riley Rader | 816.878.6316 | rrader@blockllc.com

Interior Photos



800 Westport Road

Kansas City, Missouri 64111

For Sale

Exterior Photos



For more information:

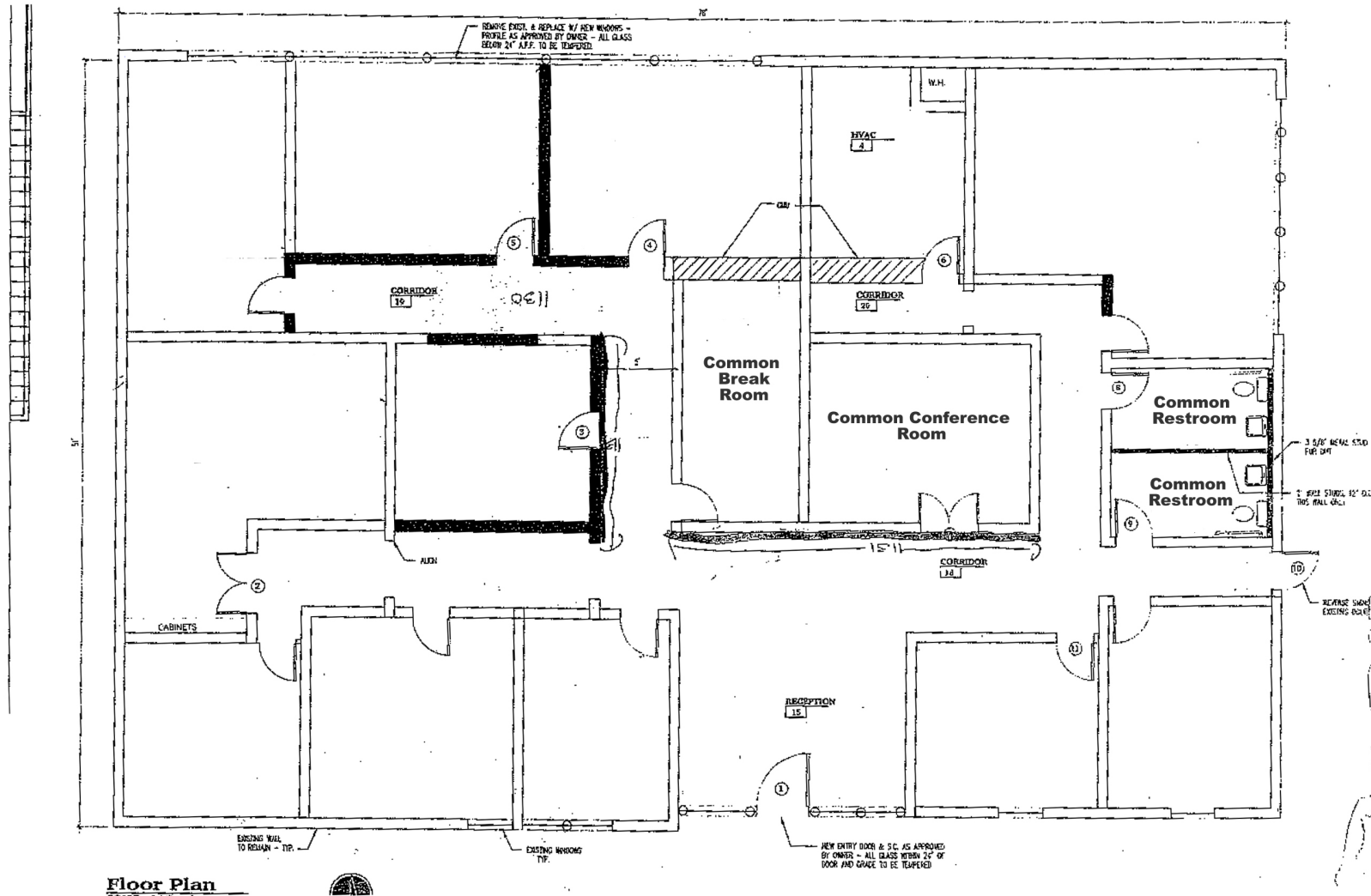
Reid Kasic | 816.878.6316 | rkasic@blockllc.com | Riley Rader | 816.878.6316 | rrader@blockllc.com

Demographics

800 Westport Rd KCMO, MO 64111	1 mi radius	3 mi radius	5 mi radius	10 mi radius
Population				
2024 Estimated Population	23,980	114,790	277,769	769,857
2029 Projected Population	24,275	115,600	278,369	774,604
2020 Census Population	22,960	112,833	273,593	753,215
2010 Census Population	21,692	106,177	258,226	721,788
Projected Annual Growth 2024 to 2029	0.2%	0.1%	-	0.1%
Historical Annual Growth 2010 to 2024	0.8%	0.6%	0.5%	0.5%
Households				
2024 Estimated Households	14,690	56,710	127,880	337,039
2029 Projected Households	14,858	57,263	128,762	341,076
2020 Census Households	13,645	53,034	121,589	322,661
2010 Census Households	13,014	49,500	112,481	304,666
Projected Annual Growth 2024 to 2029	0.2%	0.2%	0.1%	0.2%
Historical Annual Growth 2010 to 2024	0.9%	1.0%	1.0%	0.8%
Age				
2024 Est. Population Under 10 Years	5.3%	10.1%	11.6%	12.2%
2024 Est. Population 10 to 19 Years	4.1%	9.8%	11.0%	11.8%
2024 Est. Population 20 to 29 Years	28.4%	20.3%	17.8%	15.3%
2024 Est. Population 30 to 44 Years	26.9%	23.4%	23.3%	21.9%
2024 Est. Population 45 to 59 Years	14.3%	15.7%	16.5%	16.7%
2024 Est. Population 60 to 74 Years	15.2%	15.3%	14.5%	15.7%
2024 Est. Population 75 Years or Over	5.9%	5.5%	5.3%	6.4%
2024 Est. Median Age	34.9	35.2	35.0	36.5
Marital Status & Gender				
2024 Est. Male Population	53.4%	51.2%	50.8%	49.8%
2024 Est. Female Population	46.6%	48.8%	49.2%	50.2%
2024 Est. Never Married	58.2%	48.3%	45.5%	39.0%
2024 Est. Now Married	26.9%	33.7%	34.2%	40.0%
2024 Est. Separated or Divorced	12.3%	14.0%	15.9%	16.2%
2024 Est. Widowed	2.6%	4.0%	4.4%	4.9%
Income				
2024 Est. HH Income \$200,000 or More	11.6%	12.3%	10.0%	8.5%
2024 Est. HH Income \$150,000 to \$199,999	6.1%	7.2%	6.9%	7.4%
2024 Est. HH Income \$100,000 to \$149,999	15.8%	14.4%	14.7%	15.9%
2024 Est. HH Income \$75,000 to \$99,999	12.2%	11.5%	11.9%	12.7%
2024 Est. HH Income \$50,000 to \$74,999	16.3%	14.9%	15.7%	17.0%
2024 Est. HH Income \$35,000 to \$49,999	9.1%	9.7%	10.4%	11.3%
2024 Est. HH Income \$25,000 to \$34,999	7.1%	7.6%	8.3%	8.5%
2024 Est. HH Income \$15,000 to \$24,999	7.6%	7.7%	8.2%	7.5%
2024 Est. HH Income Under \$15,000	14.2%	14.7%	14.0%	11.0%
2024 Est. Average Household Income	\$103,055	\$113,036	\$102,013	\$98,389
2024 Est. Median Household Income	\$73,161	\$79,684	\$74,814	\$74,972
2024 Est. Per Capita Income	\$63,446	\$56,047	\$47,148	\$43,198
2024 Est. Total Businesses	2,687	7,719	15,852	35,980
2024 Est. Total Employees	31,599	98,742	199,126	483,536

©2024, Sites USA, Chandler, Arizona, 480-491-1112 Demographic Source: Applied Geographic Solutions 5/2024, TIGER Geography - RF1

Floor Plan



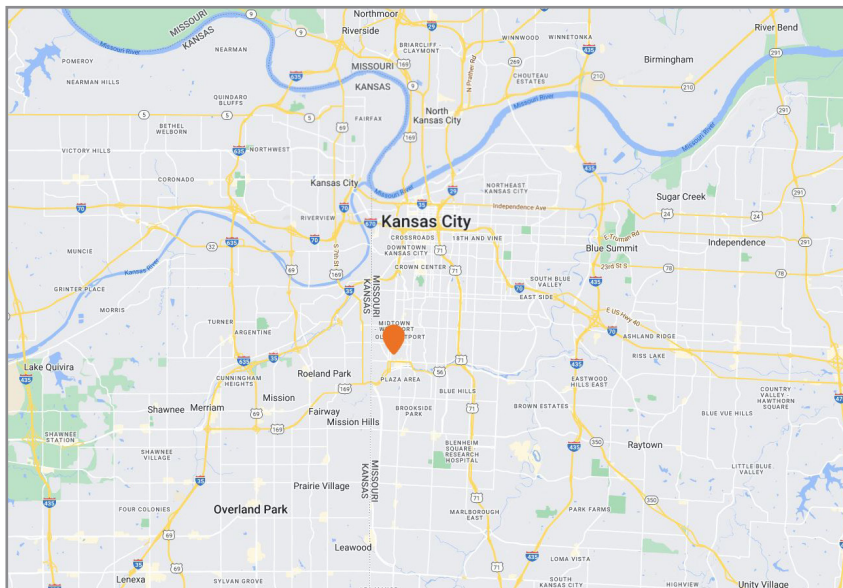
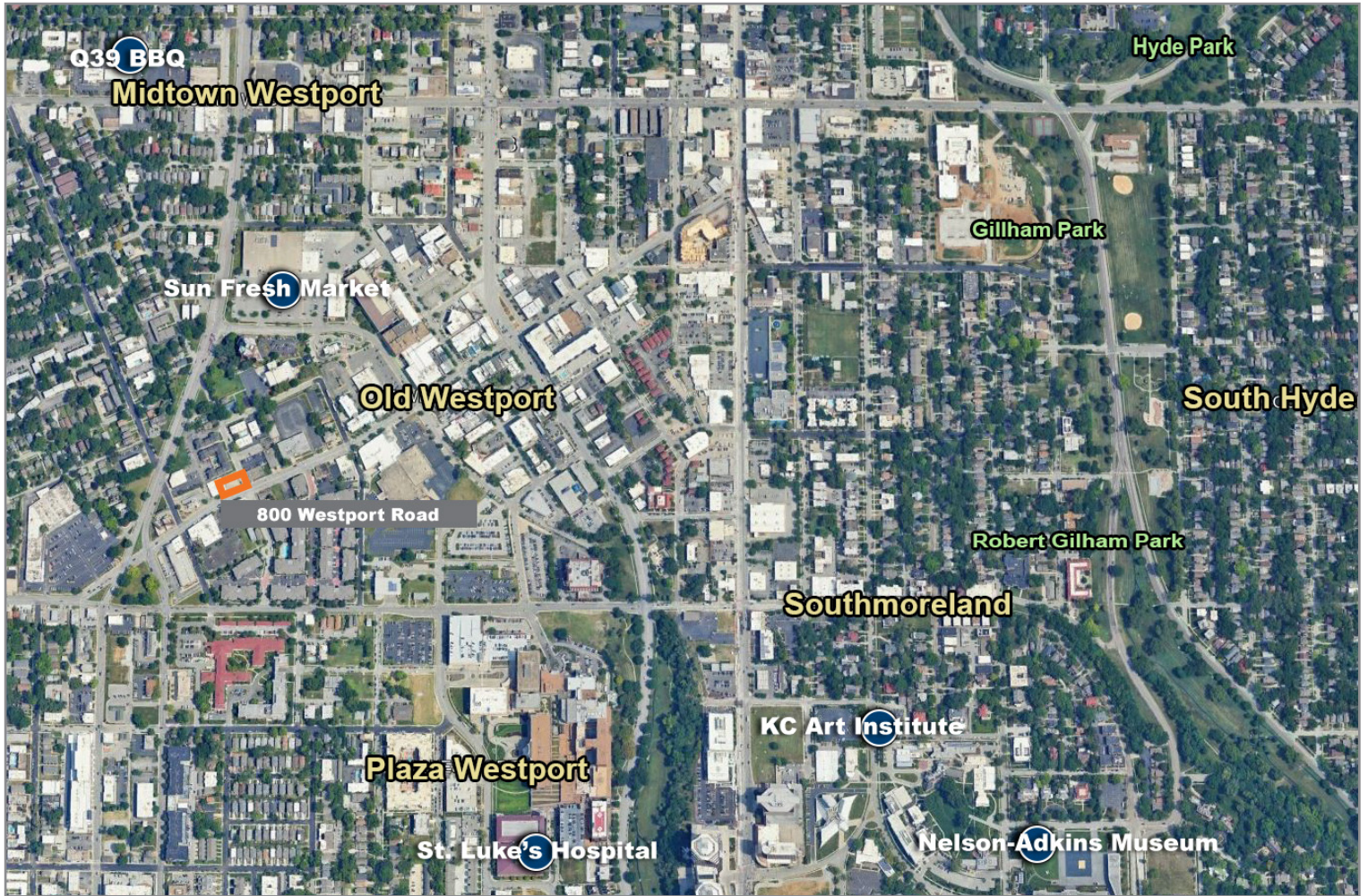
Floor Plan



800 Westport Road

Kansas City, Missouri 64111

For Sale



For more information:

Reid Koscic
816.878.6316
rkoscic@blockllc.com

Riley Rader
816.878.6316
rrader@blockllc.com

4622 Pennsylvania Ave. Suite 700
Kansas City, MO 64112
816.756.1400 | www.BLOCKLLC.com

BLOCK
REAL ESTATE SERVICES, LLC