

1200 N 41st St.

Bethany, MO 64424

For Sale



Excellent Location with Convenient Highway Access

- 51,360+/- SF Building on a 10.10+/- Acre Lot
- Drive-In Loading
- High Traffic Area with I-35 Access
- Highway Signage Opportunity
- Call For Updated Pricing

For more information:

Christian Wead

816.412.8472

cwead@blockllc.com

Michael R. Block, CPM

816.932.5549

mblock@blockllc.com

The information contained in this marketing flyer is presented as general information only. Block Real Estate Services, LLC. makes no representation as to its accuracy.

This information is not intended as legal, financial or real estate advice and must not be relied upon as such. You should make your own inquiries, obtain independent inspections, and seek professional advice tailored to your specific circumstances before making any legal, financial or real estate decisions.

1200 N 41st St.

Bethany, MO 64424

For Sale

Building Specifications

Building Size: 51,360± SF

Lot Size: 10.10± Acres

Year Built: 1967

Loading: 13 Drive-Ins

Clear Height: 15 ft.

Column Spacing: 40' x 24'

Building Count: 2

Bathroom Count: 2

Parcel ID: 1910111-01-01

Use Description: Commerical

Legal Description: PT NE NE LYNG N TAYLR ST&E OF 41ST ST/PT NE NE LYNG E I-35 R/W,S 69 SPR R/W&W OF 41ST

Address County: Harrison

Real Estate Taxes
(2023): \$4,981.38 (\$0.10/PSF)

1200 N 41st St.

Bethany, MO 64424

For Sale

Exterior Photos

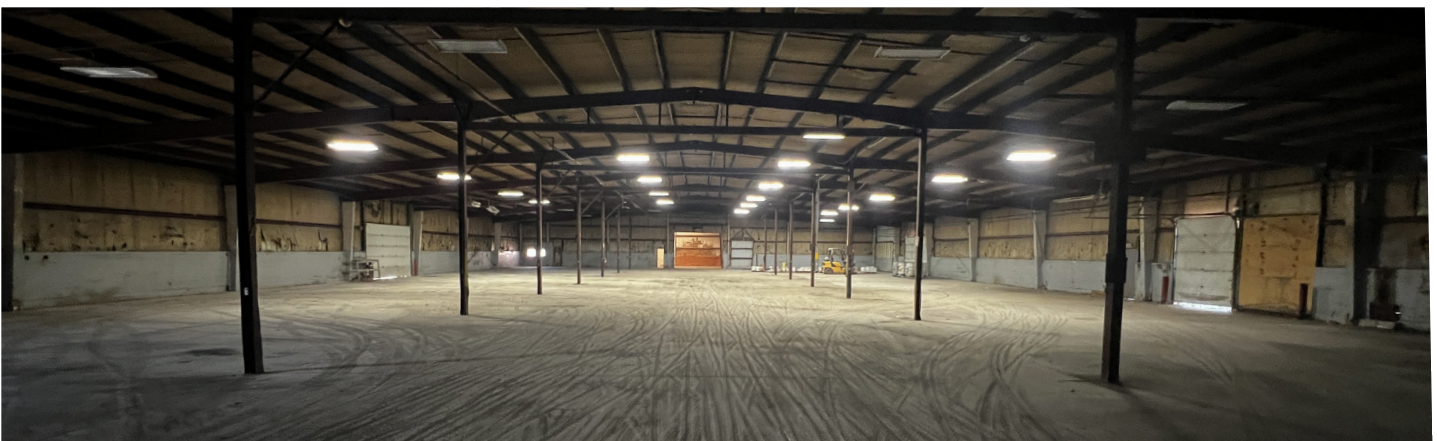


1200 N 41st St.

Bethany, MO 64424

For Sale

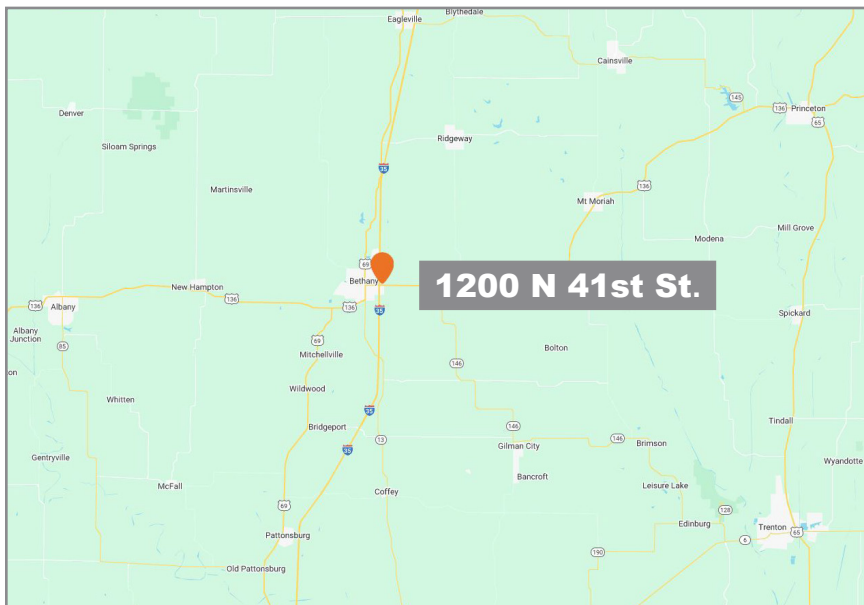
Interior Photos



1200 N 41st St.

Bethany, MO 64424

For Sale



For more information:

Christian Wead
816.412.8472
cwead@blockllc.com

Michael R. Block, CPM
816.932.5549
mblock@blockllc.com