

Tavern For Lease



Tavern For Lease

- Located on 39th and Bell KCMO
- 2,800 total SF available
- 1,400 SF +/-, plus 1,400 SF +/- basement
- Available July 1st

For more information:

Don Maddux
816.412.8440
dmaddux@blockllc.com

The information contained in this marketing flyer is presented as general information only. Block Real Estate Services, LLC makes no representation as to its accuracy. This information is not intended as legal, financial or real estate advice and must not be relied upon as such. You should make your own inquiries, obtain independent inspections, and seek professional advice tailored to your specific circumstances before making any legal, financial or real estate decisions.

Building Specifications

Description: Located on the popular West 39th Street in the historic Volker neighborhood, our property sits right next to KU Med and borders the Westport and West Plaza areas. The building is surrounded with large windows and has a classic brick facade. Attracting young professionals from KU Med as well as residents of the surrounding neighborhoods, our property boasts high foot traffic as well as the parking lot space to support it. With the near completion of multiple luxury developments, that foot traffic will only increase. The space includes a 1400sf basement perfect for storage as well as a wide adjacent sidewalk ideal for patio seating. Commonly called the heart of 39th Street by local business owners, we hope you consider expanding or starting your business here at our property.

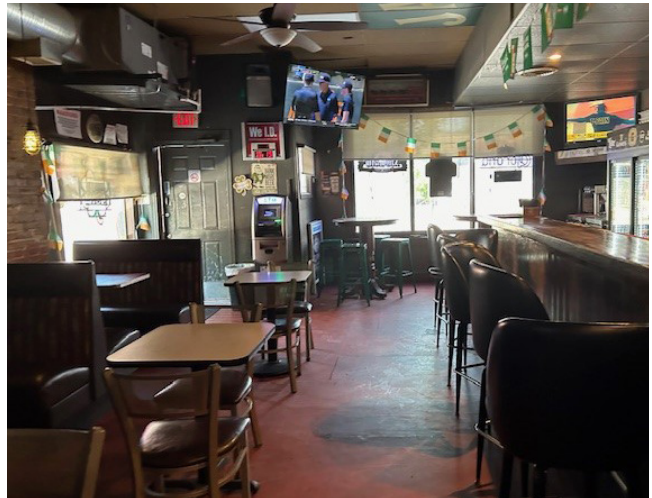
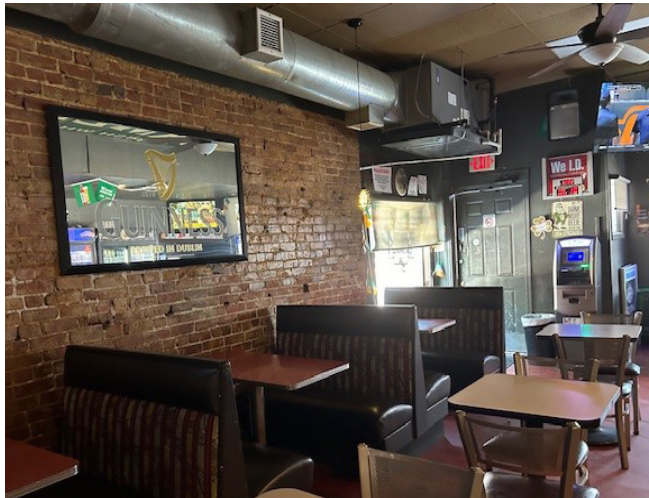
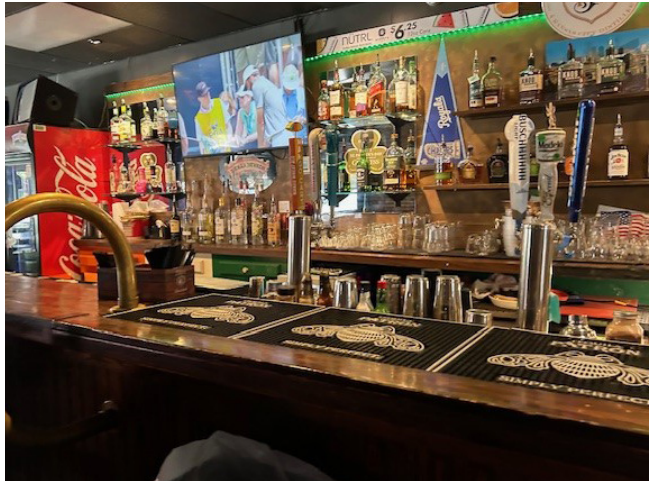
Square Feet Available: 2,800 SF

Total Building Square Feet: 2,800 SF

Type of Lease: NNN

Offering Rate: \$4,550 per month

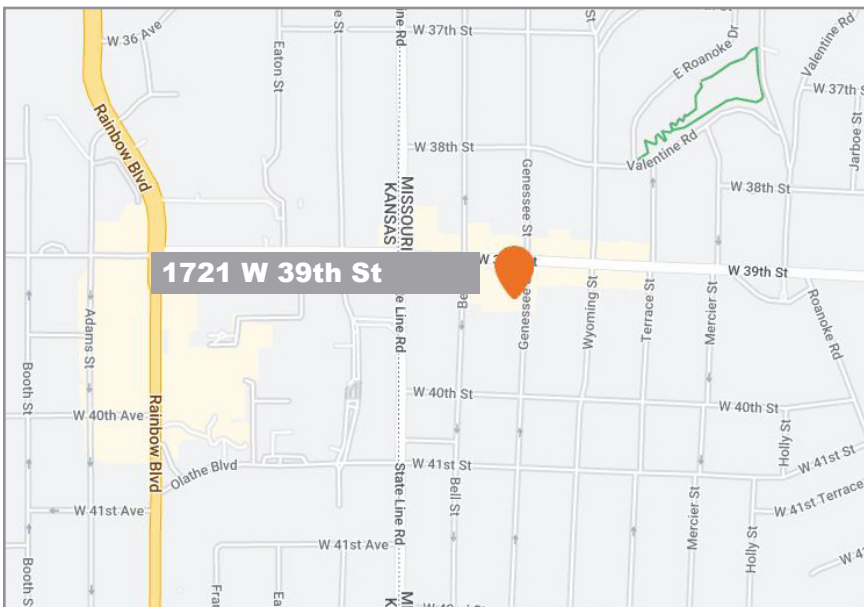
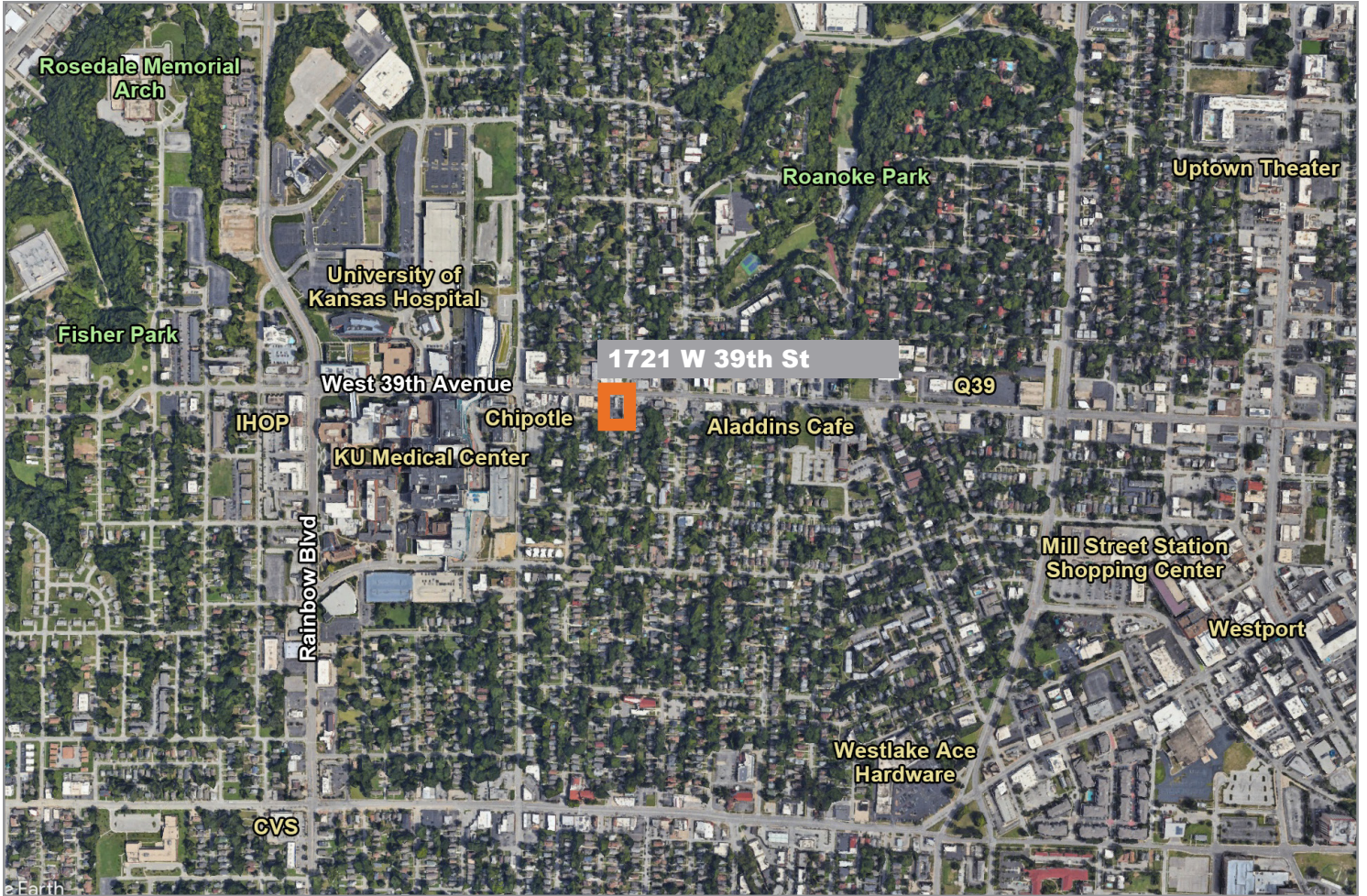
Property Photos



1721 West 39th Street

Kansas City, Missouri

For Lease



For more information:

Don Maddux

816.412.8440

dmaddux@blockllc.com