



## High Visibility Industrial/Flex Building

- 9,000± SF on a 0.55± Acre Lot
- 4 Seperate Bays
- 14'-17' Clear Height
- 4 Drive-In Doors
- Frontage on N Scott Ave
- Excellent Owner-User/Investment Opportunity

## For more information:

Christian Wead  
816.412.8472  
cwead@blockllc.com

Blaise Gunnerson  
816.878.6314  
bgunnerson@blockllc.com

The information contained in this marketing flyer is presented as general information only. Block Real Estate Services, LLC makes no representation as to its accuracy. This information is not intended as legal, financial or real estate advice and must not be relied upon as such. You should make your own inquiries, obtain independent inspections, and seek professional advice tailored to your specific circumstances before making any legal, financial or real estate decisions.

## Building Specifications

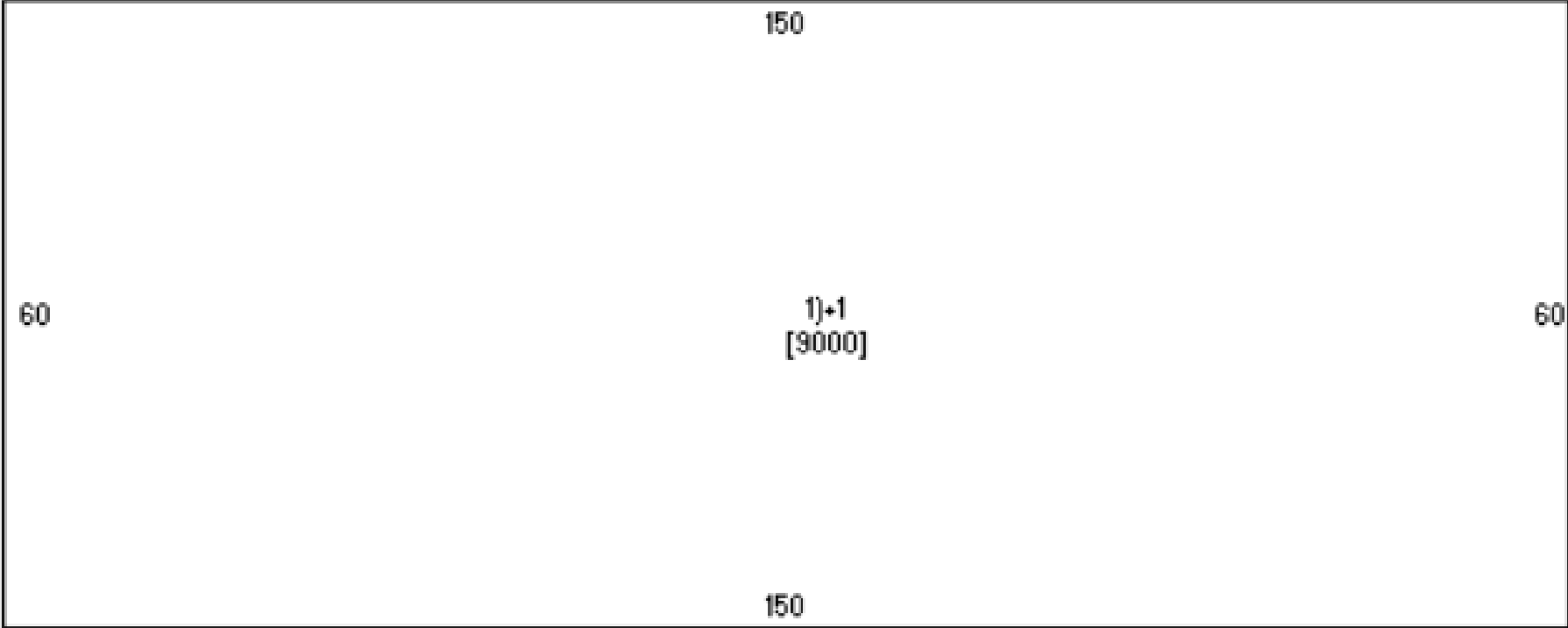
Building Size:	9,000±
Lot Size:	0.55±
Year Built:	1983
Loading:	4 Drive-Ins (12'X14'±)
Clear Height:	14'-17'
Construction Type:	Steel
Parking:	1.42/1,000 SF (12 Spaces)
Zoning:	C-2
Frontage:	196' on N Scott Ave
Existing Users:	Auto Repair Shop, Automotive Part Distributor
Neighboring Users:	Belton Plaza, Roadside Bar & Grill, and More!
Real Estate Taxes (2024):	\$7,033.49 (\$0.78 PSF)
Parcel ID:	05-01-11-100-003-021.001
Legal Description:	KINGSLAND LOT 7 TRACT 1

604 North Scott Avenue

Belton, MO 64012

For Sale

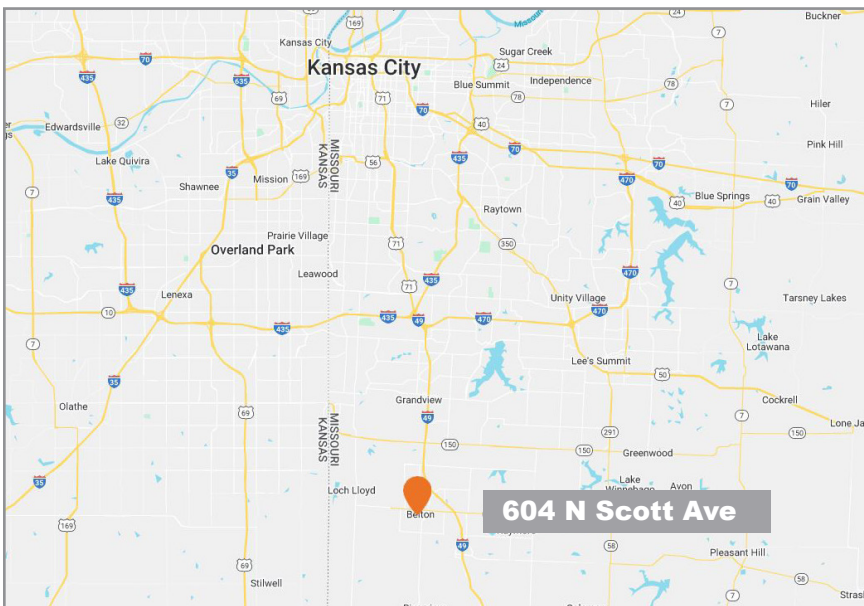
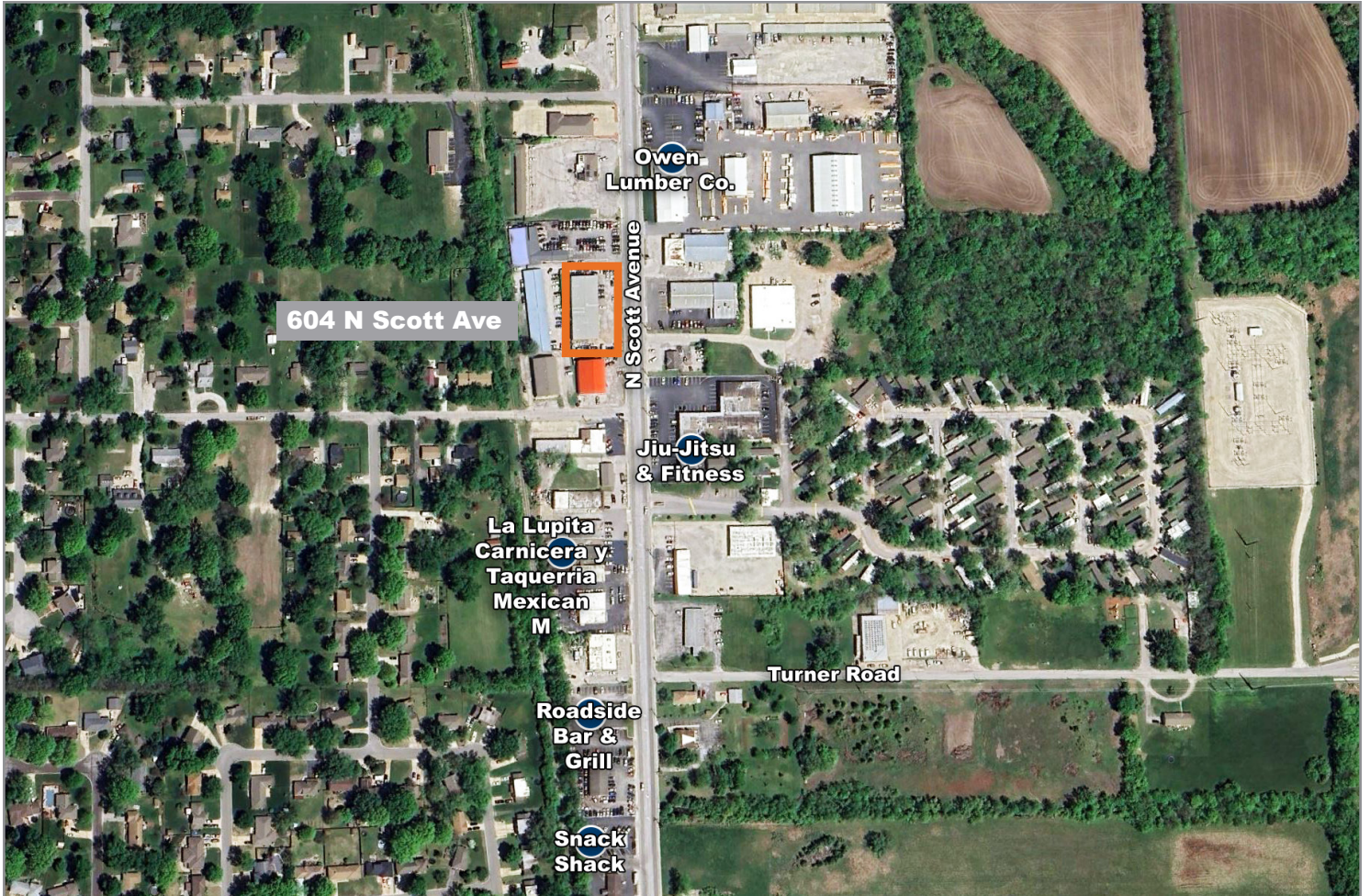
Floor Plan



# 604 North Scott Avenue

Belton, MO 64012

# For Sale



For more information:

Christian Wead

816.412.8472

[cwead@blockllc.com](mailto:cwead@blockllc.com)

Blaise Gunnerson

816.878.6314

[bgunnerson@blockllc.com](mailto:bgunnerson@blockllc.com)