

9230 Pflumm Road

Lenexa, KS 66215

For Sale

## Retail Property For Sale



### Retail Property For Sale

- Excellent Live/Work Opportunity
- Completely Remodeled with High-End Designer Finishes
- Located in Old Town Lenexa
- Zoning is HBD (Historic Business District)
- Excellent Signage Opportunity on Building
- Out Building for Additional Storage

For more information:

Don Maddux  
816 217-7290  
[dmaddux@blockllc.com](mailto:dmaddux@blockllc.com)

The information contained in this marketing flyer is presented as general information only. Block Real Estate Services, LLC makes no representation as to its accuracy. This information is not intended as legal, financial or real estate advice and must not be relied upon as such. You should make your own inquiries, obtain independent inspections, and seek professional advice tailored to your specific circumstances before making any legal, financial or real estate decisions.

## Building Specifications

Square Feet Available: 2,744 SF

Lot Size: 0.17 AC

Sale Price: \$750,000.00

Year Built/Renovated: 1920/2016

Building Height: 2 Stories

Zoning: HBD

Parking: 3 Spaces (1.25 Spaces per 1,000 SF Leased)

Frontage: 47' on Pflumm Rd

Building Class: C

Tenancy: Single

For more information:

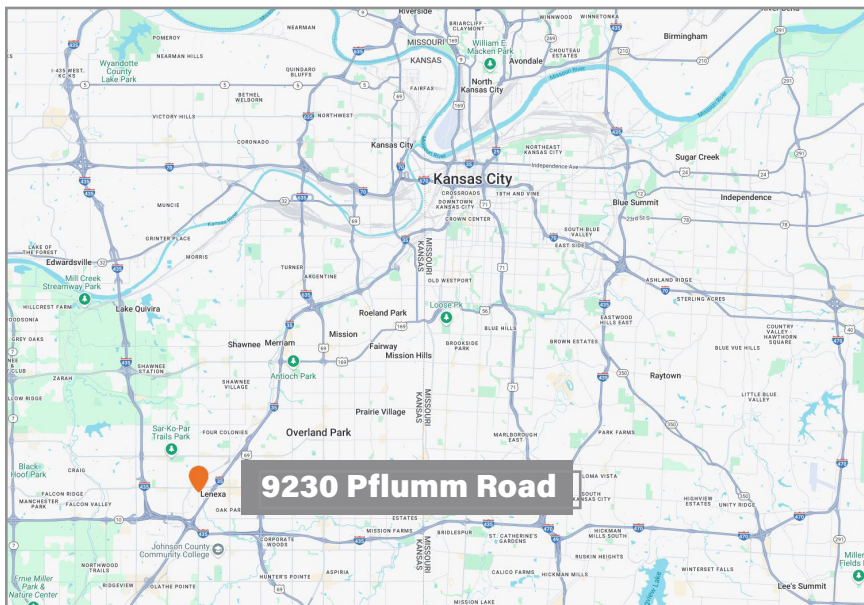
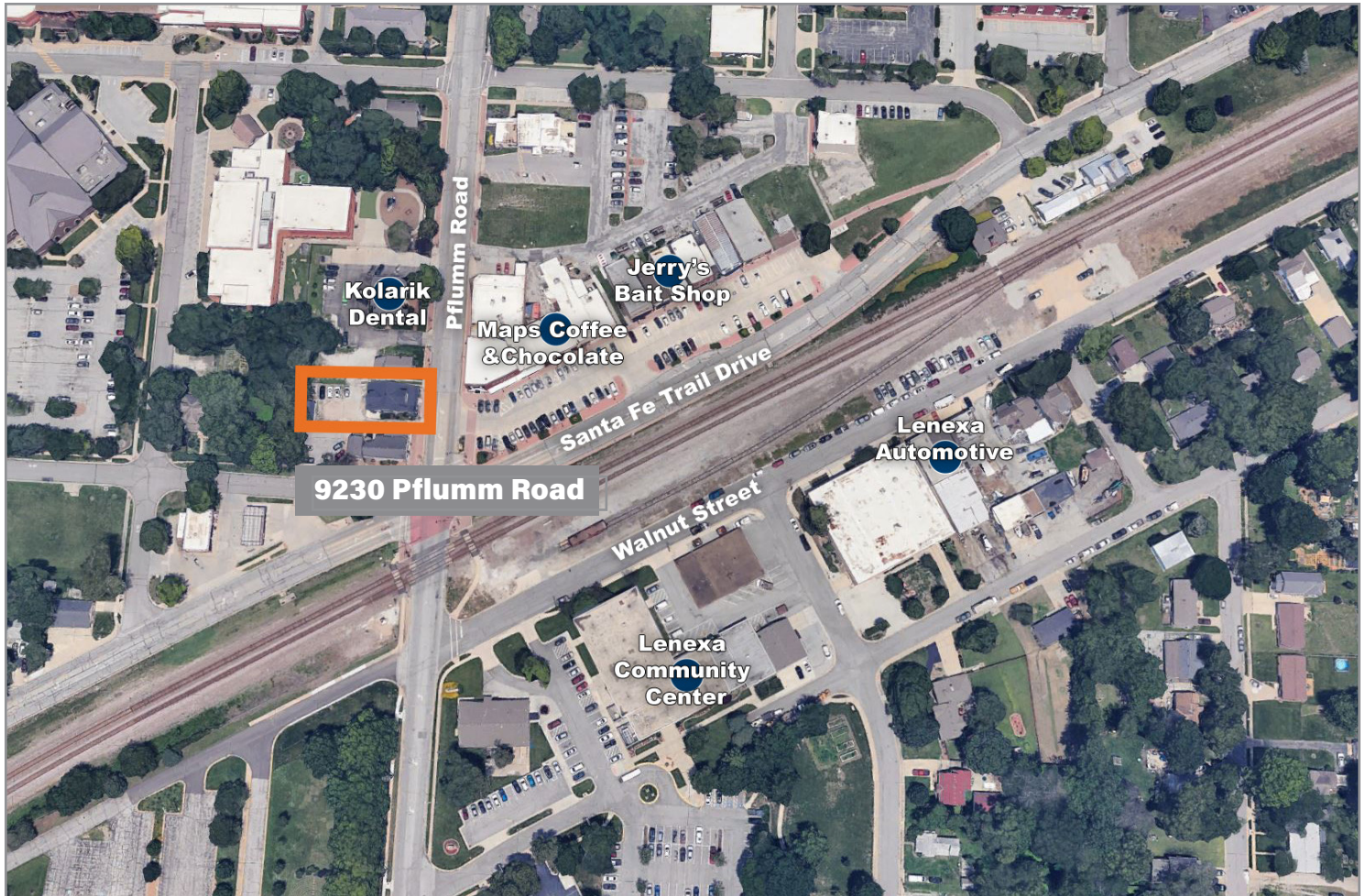
Don Maddux  
816 217-7290  
dmaddux@blockllc.com



# 9230 Pflumm Road

Lenexa, KS 66215

# For Sale



For more information:

Don Maddux  
816 217-7290  
[dmaddux@blockllc.com](mailto:dmaddux@blockllc.com)

4622 Pennsylvania Ave., Suite 700  
Kansas City, MO 64112  
816.756.1400 | [www.BLOCKLLC.com](http://www.BLOCKLLC.com)

**BLOCK**  
REAL ESTATE SERVICES, LLC