

20323 South State Route D

Belton, Missouri 64012

For Sale



Convenient Highway Access

- ±3.8 Acres of Residential Land
- ±7 Miles From Central Belton, MO
- High Visibility along Holmes Rd & E 203rd St
- Prime Signage Opportunity

For more information:

Christian Wead
816.412.8472
cwead@blockllc.com

Blaise Gunnerson
816.878.6314
bgunnerson@blockllc.com

The information contained in this marketing flyer is presented as general information only. Block Real Estate Services, LLC makes no representation as to its accuracy. This information is not intended as legal, financial or real estate advice and must not be relied upon as such. You should make your own inquiries, obtain independent inspections, and seek professional advice tailored to your specific circumstances before making any legal, financial or real estate decisions.

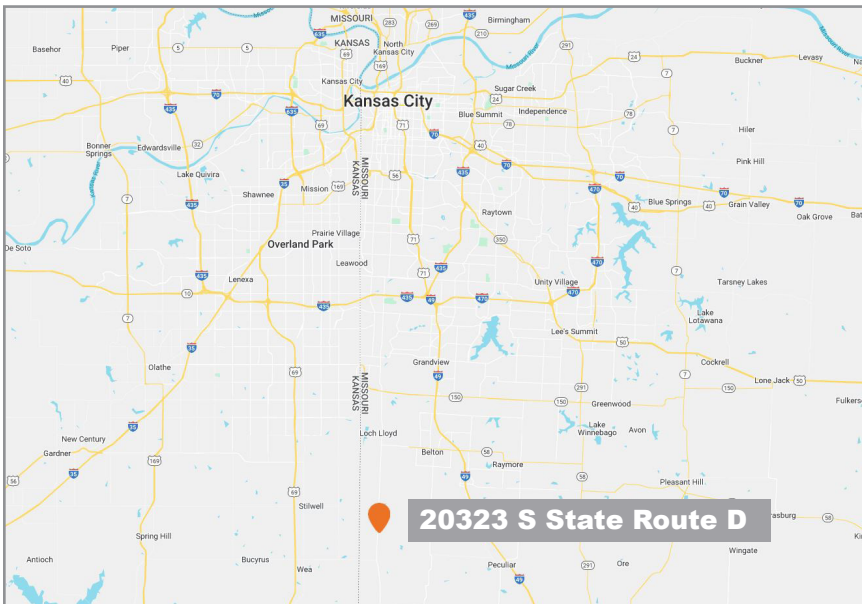
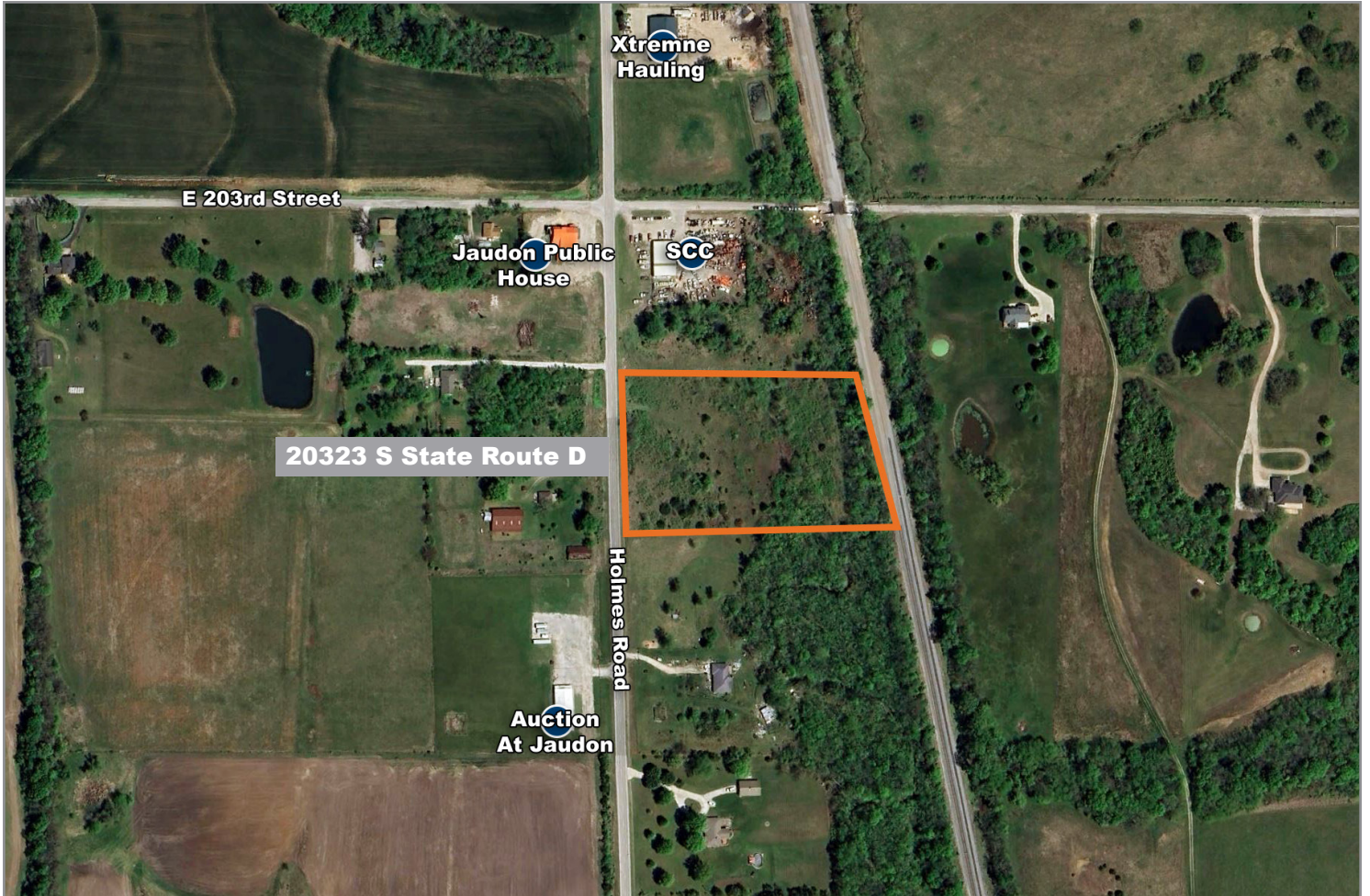
Parcel Specifications

Acreage:	±3.80
Use Description:	Residential
Parcel Sub Type:	Agricultural
Subdivision:	Applewood Estates
School District:	Belton
Neighboring Users:	Jaudon Public House and More!
Real Estate Taxes (2024):	\$286.54
Parcel ID:	06-02-04-000-000-002.008
Legal Description:	APPLEWOOD EST LOT 2 2071/95

20323 South State Route D

Belton, Missouri 64012

For Sale



For more information:

Christian Wead

816.412.8472

cwead@blockllc.com

Blaise Gunnerson

816.878.6314

bgunnerson@blockllc.com