

6320 Nieman Road

Shawnee, Kansas 66203

For Lease



Auto Repair Shop

- Positioned in one of Johnson County's most accessible corridors, 6320 Nieman Road offers an exceptional leasing opportunity for an automotive business seeking a well located property with with a professional presence.
- Generous on-site parking supports high traffic business operations.
- Fully Equipped: All on-site equipment is included. Rare turnkey opportunity!

For more information:

Reid Kosic
816.878.6316
rkosic@blockllc.com

Riley Rader
816.412.8482
rrader@blockllc.com

The information contained in this marketing flyer is presented as general information only. Block Real Estate Services, LLC makes no representation as to its accuracy. This information is not intended as legal, financial or real estate advice and must not be relied upon as such. You should make your own inquiries, obtain independent inspections, and seek professional advice tailored to your specific circumstances before making any legal, financial or real estate decisions.

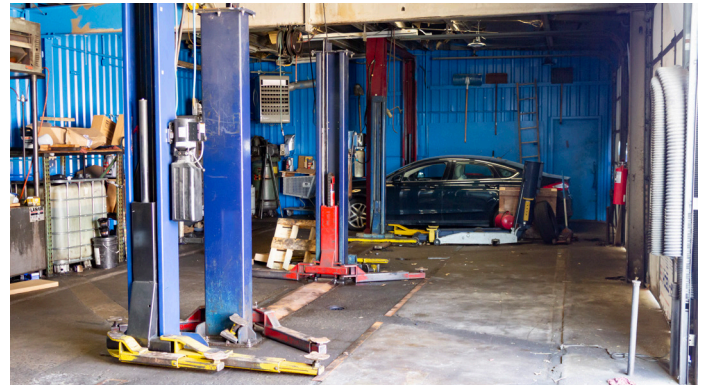
6320 Nieman Road

Shawnee, Kansas 66203

For Lease

Building Specifications

Square Feet Available:	2,617 SF
Office Space:	1 Office
Loading:	4 Bays
Type of Lease:	NNN
Offering Rate:	\$20.00 PSF



For more information:

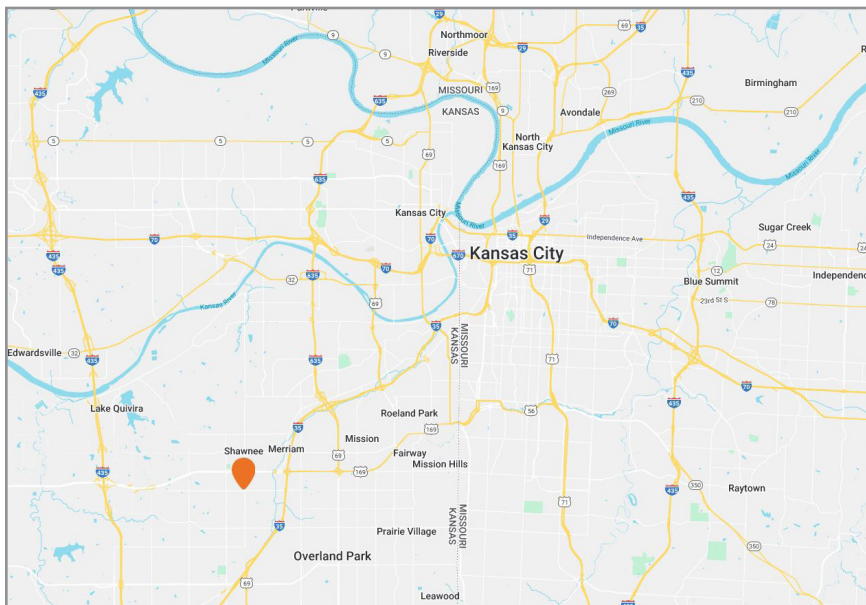
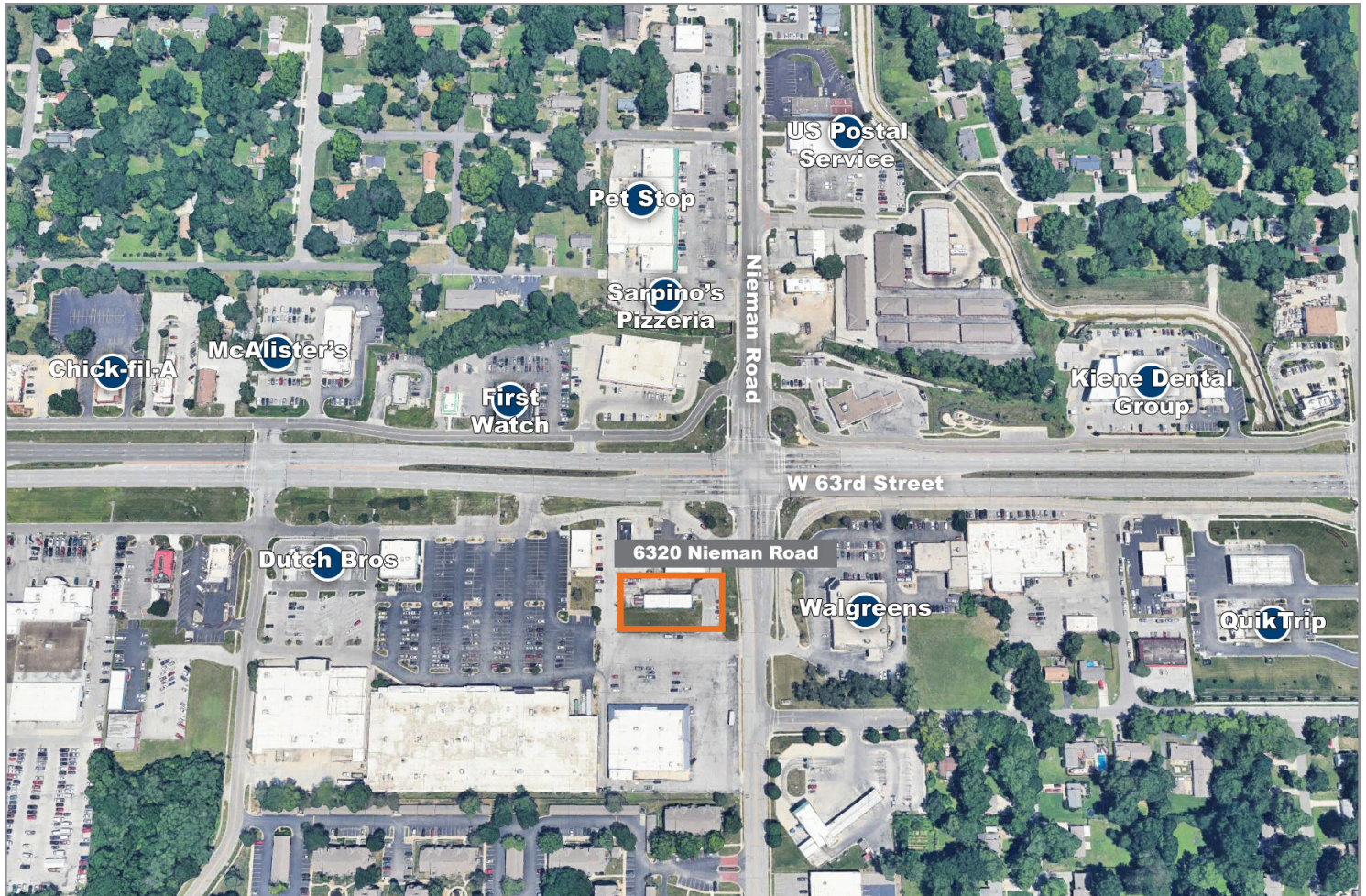
Reid Kasic
816.878.6316
rkasic@blockllc.com

Riley Rader
816.412.8482
rrader@blockllc.com

6320 Nieman Road

Shawnee, Kansas 66203

For Lease



For more information:

Reid Kosic
816.878.6316
rkosic@blockllc.com

Riley Rader
816.412.8482
rrader@blockllc.com