

FOR LEASE



Prestigious Mixed-Use Business Park

- Excellent access and location in the highly-desirable Johnson County submarket
- 15 minutes from downtown Kansas City and less than 30 minutes from the Kansas City International Airport
- Ample parking which is designed with spaces close to building entrances
- 1,909 SF - 17,410 SF Available
- Fully Furnished Floor Available

For more information:

Kenneth G. Block, SIOR, CCIM
816.932.5551
kblock@blockllc.com

Andrew T. Block
816.412.5873
ablock@blockllc.com

Hagen Vogel
816.878.6338
hvogel@blockllc.com

The information contained in this marketing flyer is presented as general information only. Block Real Estate Services, LLC. makes no representation as to its accuracy. This information is not intended as legal, financial or real estate advice and must not be relied upon as such. You should make your own inquiries, obtain independent inspections, and seek professional advice tailored to your specific circumstances before making any legal, financial or real estate decisions.



General Building Information

Location:	8325 Lenexa Drive, Lenexa, Kansas
Building Size:	Four-story building; 68,917 total rentable square feet
Parking Ratio:	4.1 cars per 1,000 square feet
Year Constructed:	1986
Building Construction:	Precast concrete panels and glass
Zoning:	Office (BP-1)
Ceiling Height:	9'
Design Features:	This multi-tenant facility is designed to accommodate those users seeking approximately up to 6,018 square feet and up.
Base Rent:	\$22.25 per rentable square foot per year with 2.5% annual increases
Lease Type:	Full-service basis with a 2024 base year for operating expenses
Common Area Factor:	13.8%
Utilities (Lessor):	Electricity - Kansas City Power & Light Gas - KPL Gas Services Water - Water District #1 of Johnson County

First Floor

Location:	8325 Lenexa Drive, Lenexa, Kansas Lenexa, Kansas
SF Available:	Suite 150: 6,018 SF Suite 125: 1,909 SF Suite 100: 7,514 SF
Base Rent:	\$22.25 per rentable square foot per year on a full service basis lease
Zoning:	BP-1

For more information:

Kenneth G. Block, SIOR, CCIM
816.932.5551
kblock@blockllc.com

Hagen Vogel
816.878.6338
hvogel@blockllc.com

Andrew T. Block
816.412.5873
ablock@blockllc.com

Second Floor

Location:	8325 Lenexa Drive, Lenexa, Kansas Lenexa, Kansas
SF Available:	Suite 250: 4,067 SF
Base Rent:	\$22.25 per rentable square foot per year on a full service basis lease
Zoning:	BP-1

For more information:

Kenneth G. Block, SIOR, CCIM
816.932.5551
kblock@blockllc.com

Hagen Vogel
816.878.6338
hvogel@blockllc.com

Andrew T. Block
816.412.5873
ablock@blockllc.com

Third Floor

Location:	8325 Lenexa Drive, Lenexa, Kansas Lenexa, Kansas
SF Available:	Suite 300: 17,410 SF (Can be demised)
Base Rent:	\$22.25 per rentable square foot per year on a full service basis lease
Zoning:	BP-1

For more information:

Kenneth G. Block, SIOR, CCIM
816.932.5551
kblock@blockllc.com

Hagen Vogel
816.878.6338
hvogel@blockllc.com

Andrew T. Block
816.412.5873
ablock@blockllc.com



Amenities

When you select Pine Ridge Business Park for your new business home, you also have access to a host of amenities designed to make your life more productive and enjoyable. These amenities including multiple ponds with water features, walking and running trails, and a nature reserve. Pine Ridge has something for everyone including immediate access to over 1,000 hotel and motel rooms, numerous restaurants, office supplies, dry cleaners, as well as a regional shopping mall.

Some of the amenities offered within and nearby Pine Ridge include:

On Site Staff

Pine Ridge Business Park is staffed with seasoned professionals who are assigned specific buildings to watch over virtually every aspect of Park life, including:

- Exterior landscaping maintenance
- Heating/air conditioning service
- Snow removal
- Window washing
- Exterior building repairs
- And a host of other functions

Post Office: Available in both East and West Parks is a post office that includes:

- Mail pickup and delivery Monday thru Saturday.
- Overnight air express services including, Federal Express, Airborne and Express Mail.
- Large parcel pickup and delivery.
- 24-hour Keyed access to facilities.
- Individual lock boxes.

Fiber Optics Telecommunication Systems: Fiber Optics are installed throughout Pine Ridge Business Park and are available to all park occupants. Pine Ridge Business Park is supplied by: AT & T, SureWest, Qwest, Espire, Sprint, Brooks Fiber, Time Warner, MCI, CTC Wireless.

Nature Trails: A nature reserve section is set right outside your office with rolling berms, walking and running trails, and multiple ponds with water fountains, is located in the 54 acre expansion, currently under development in Pine Ridge West.



Amenities

Landscape Design: By preserving the natural terrain with prairie grasses, green belts, rolling berms, magnificent pine trees, and numerous landscaped flower beds, Pine Ridge harmoniously blends together office, high-technology, light industrial, distribution, and research-minded companies in a master planned business park with in a close metropolitan location.

- Pine Ridge Business Park has won many local and national landscaping and plantings beautification awards.
- Over 6,500 bulbs are planted each fall for spring tulips.
- Semi-annual flower plantings and annual landscaping upgrade program were put in place to insure that the landscaped areas continue to be of the highest quality.
- Park Covenants specifically require landscaping to be in excess of those requirements of the City of Lenexa.
- All green areas have underground sprinkler systems.
- Three ponds, waterfalls, fountains, and flowerbeds enhance the beauty and tranquility of the 54 acre expansion area, currently under development in Pine Ridge West.

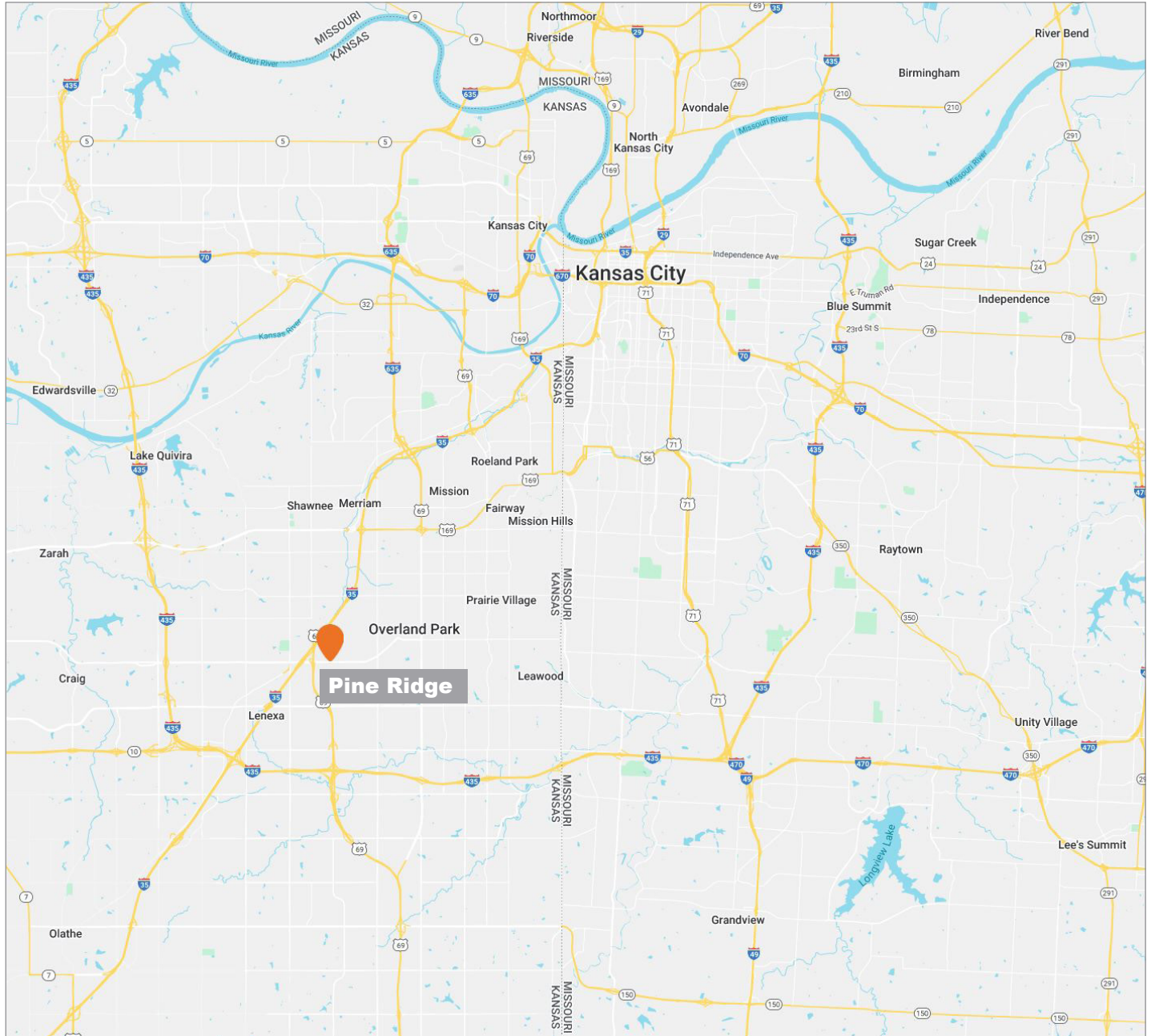
Security: All Parking lots are lit from dusk until dawn.

Other Nearby Amenities:

In addition to the many tenant services available in the Park, the abundance of nearby retail, services and recreational options make Pine Ridge the ideal location for your business.

- Over 1,000 hotel and motel rooms nearby.
- A large number of fast-food, casual and fine dining restaurants serve the immediate area.
- Office supplies, quick print facilities, and a variety of business services.
- Multiple child day care centers are located with-in one mile of Pine Ridge.
- Several recreational parks are located within walking distance from Pine Ridge, including Maple Hills Park with its running track, softball fields, benches and large open areas maintained in first class condition.
- Some of the best shopping in the metro, including Oak Park Mall.

Map

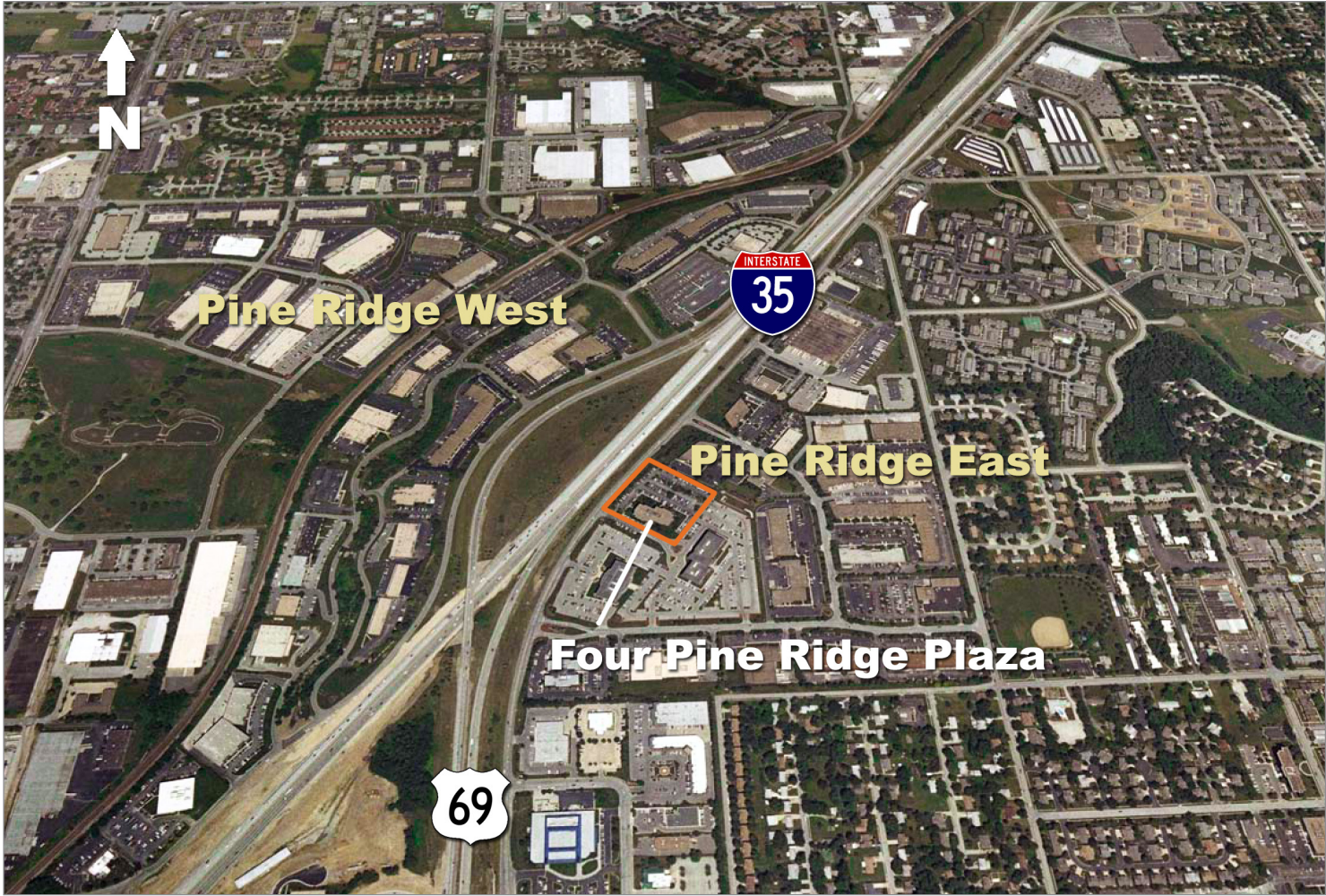


Four Pine Ridge Plaza

8325 Lenexa Drive, Lenexa, Kansas



Aerial



First Floor Plan

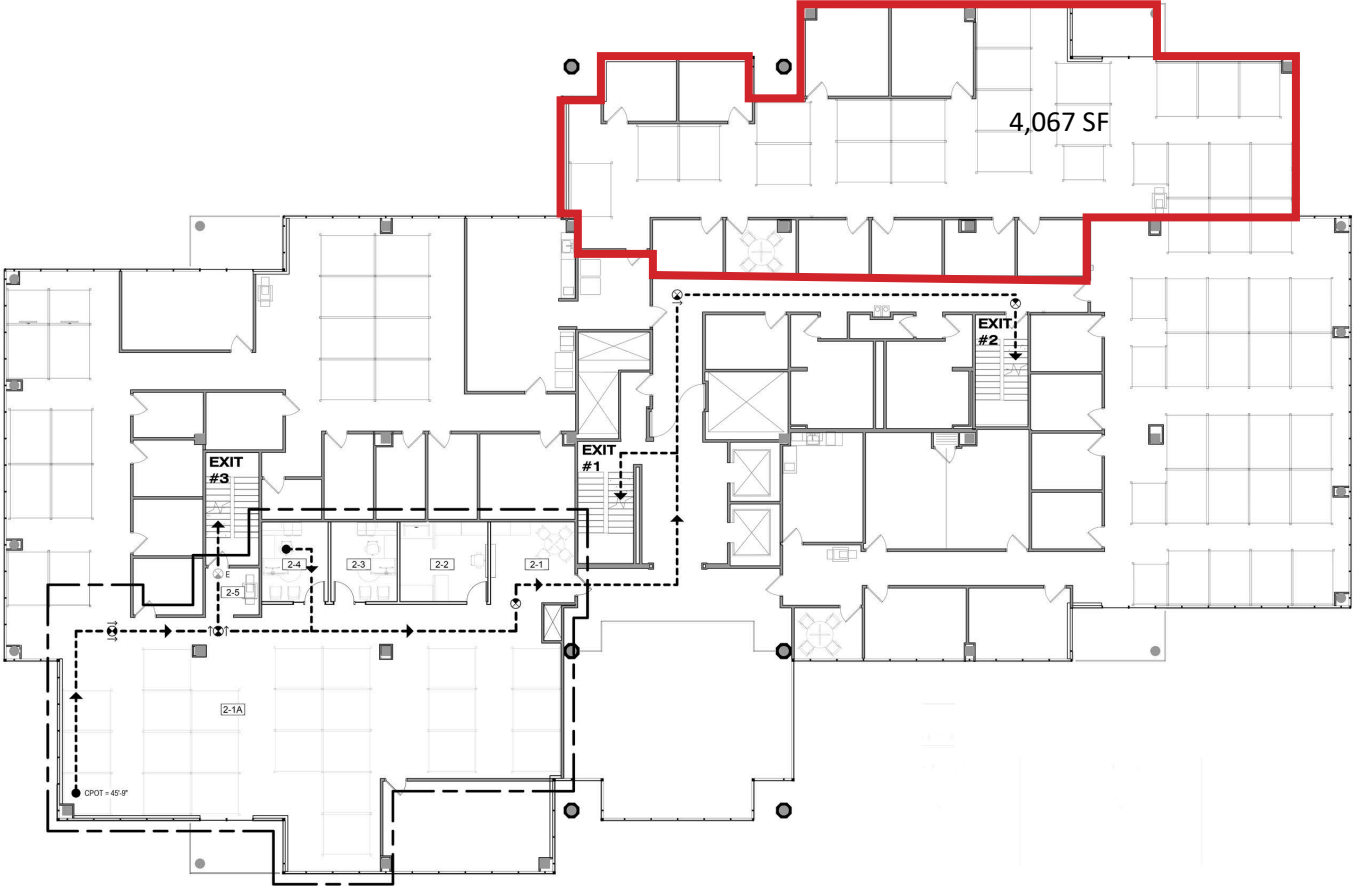


Four Pine Ridge Plaza

8325 Lenexa Drive, Lenexa, Kansas



Second Floor Plan



Third Floor Plan

