



Space Ready for Occupancy in a Medical Office

- Suite E: 1,400 SF
- Clean, professional presence suitable for client-facing businesses
- Highly accessible location with convenient connectivity to major thoroughfares throughout St. Joe
- Ample on-site parking
- Tenant Improvement allowance available
- Negotiable lease terms - Call for lease rate

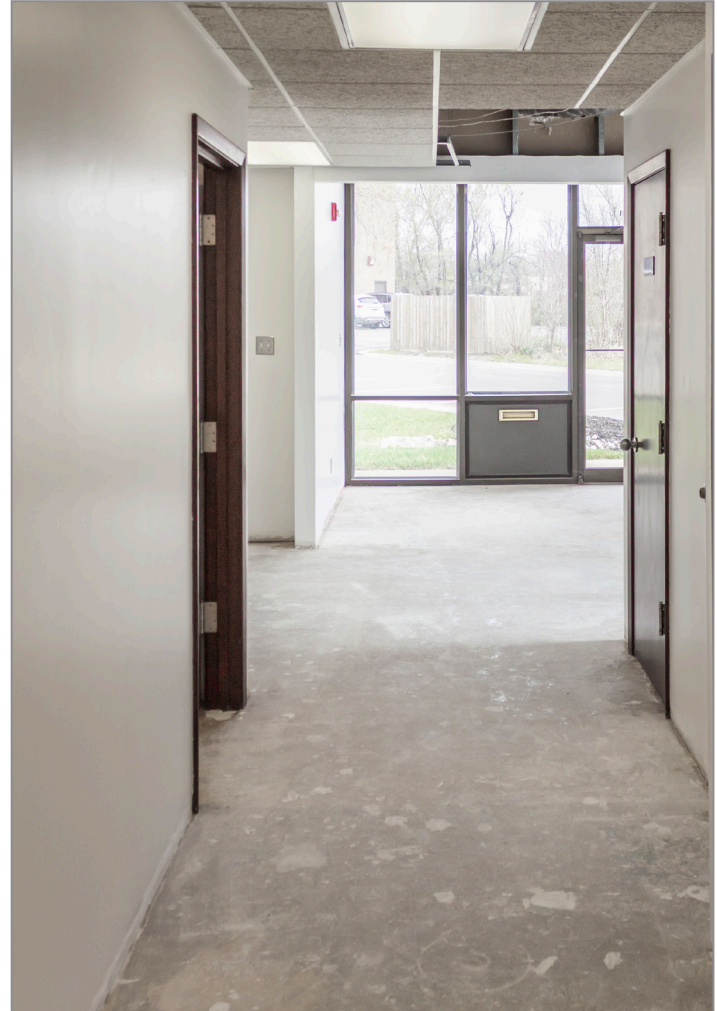
For more information:

Reid Koscic
816.878.6316
rkoscic@blockllc.com

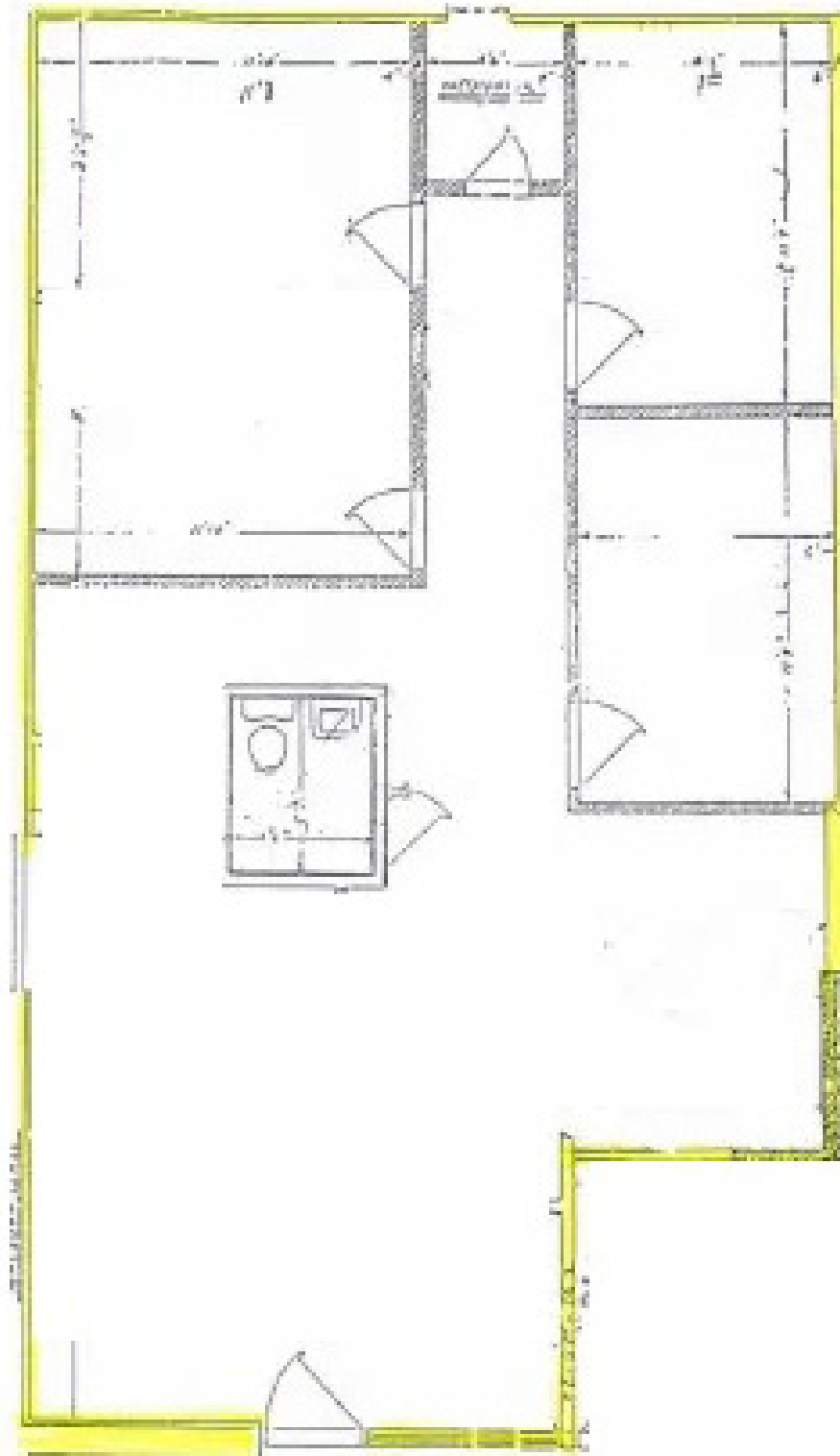
Riley Rader
816.412.8482
rrader@blockllc.com

The information contained in this marketing flyer is presented as general information only. Block Real Estate Services, LLC makes no representation as to its accuracy. This information is not intended as legal, financial or real estate advice and must not be relied upon as such. You should make your own inquiries, obtain independent inspections, and seek professional advice tailored to your specific circumstances before making any legal, financial or real estate decisions.

Property Photos



Floor Plan



3201 Ashland Avenue

St. Joseph, Missouri 64506

For Lease



For more information:

Reid Koscic
816.878.6316
rkoscic@blockllc.com

Riley Rader
816.412.8482
rrader@blockllc.com