

Executive Park Distribution Center

1250-1260 N. Corrington Avenue, Kansas City, MO

For Lease



Excellent Site with Great Access

- Two Tenant Building
- 18' Clear Height
- Dock-high and grade-level drive-in access
- Excellent I-435 Access
- Business Park Location

For more information:

Zach Hubbard
816.932.5504
zhubbard@blockllc.com

Blaise Gunnerson
816.878.6314
bgunnerson@blockllc.com

The information contained in this marketing flyer is presented as general information only. Block Real Estate Services, LLC makes no representation as to its accuracy. This information is not intended as legal, financial or real estate advice and must not be relied upon as such. You should make your own inquiries, obtain independent inspections, and seek professional advice tailored to your specific circumstances before making any legal, financial or real estate decisions.

Executive Park Distribution Center

1250-1260 N. Corrington Avenue, Kansas City, MO

For Lease

Building Specifications

Total Building SF:	41,258+/- SF Suite 1250 at 21,509+/- SF Suite 1260 at 19,749+/- SF
Office Space:	Suite 1260 has 2,349± SF; Suite 1250 has 2,632± SF (offices are under the low roof section of the building)
Year Built:	1988
Ceiling Height:	'18
Loading:	Suite 1250: One 12' x 14' grade level drive-in, one dock well; Suite 1260: Three dock doors, one 12' x 8' drive-in door
Parking:	45 Cars
Electric Service:	
Column Spacing:	
Floor Type:	Poured Concrete
Sprinkler:	Wet System
Type of Lease:	NNN
Net Charges: (2025 Est./PSF)	RE Taxes: \$0.97 Insurance: \$0.41 CAM: \$0.74 Total: \$2.12

For more information:

Zach Hubbard
816.932.5504
zhubbard@blockllc.com

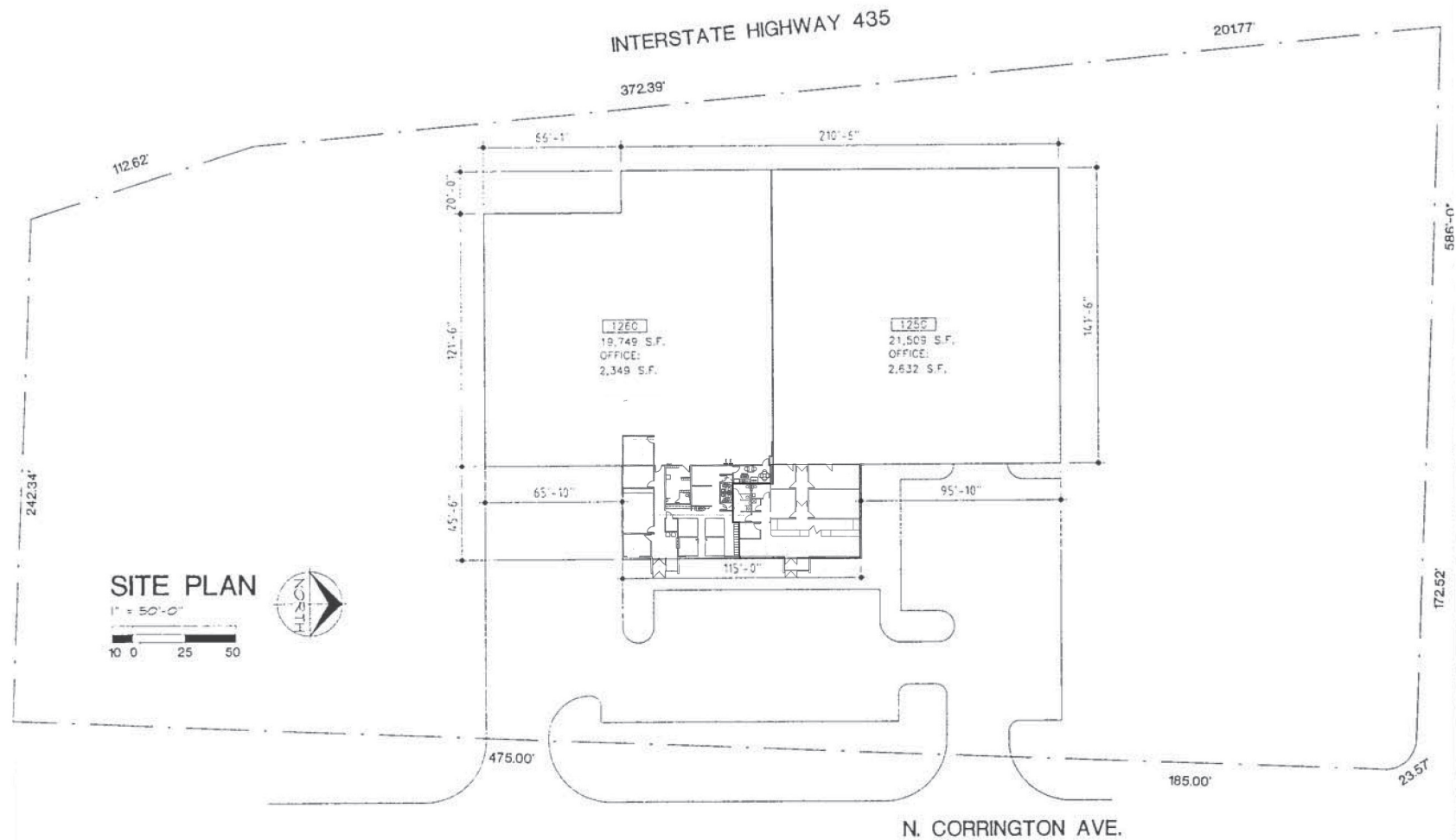
Blaise Gunnerson
816.878.6314
bgunnerson@blockllc.com

Executive Park Distribution Center

1250-1260 N. Corrington Avenue, Kansas City, MO

For Lease

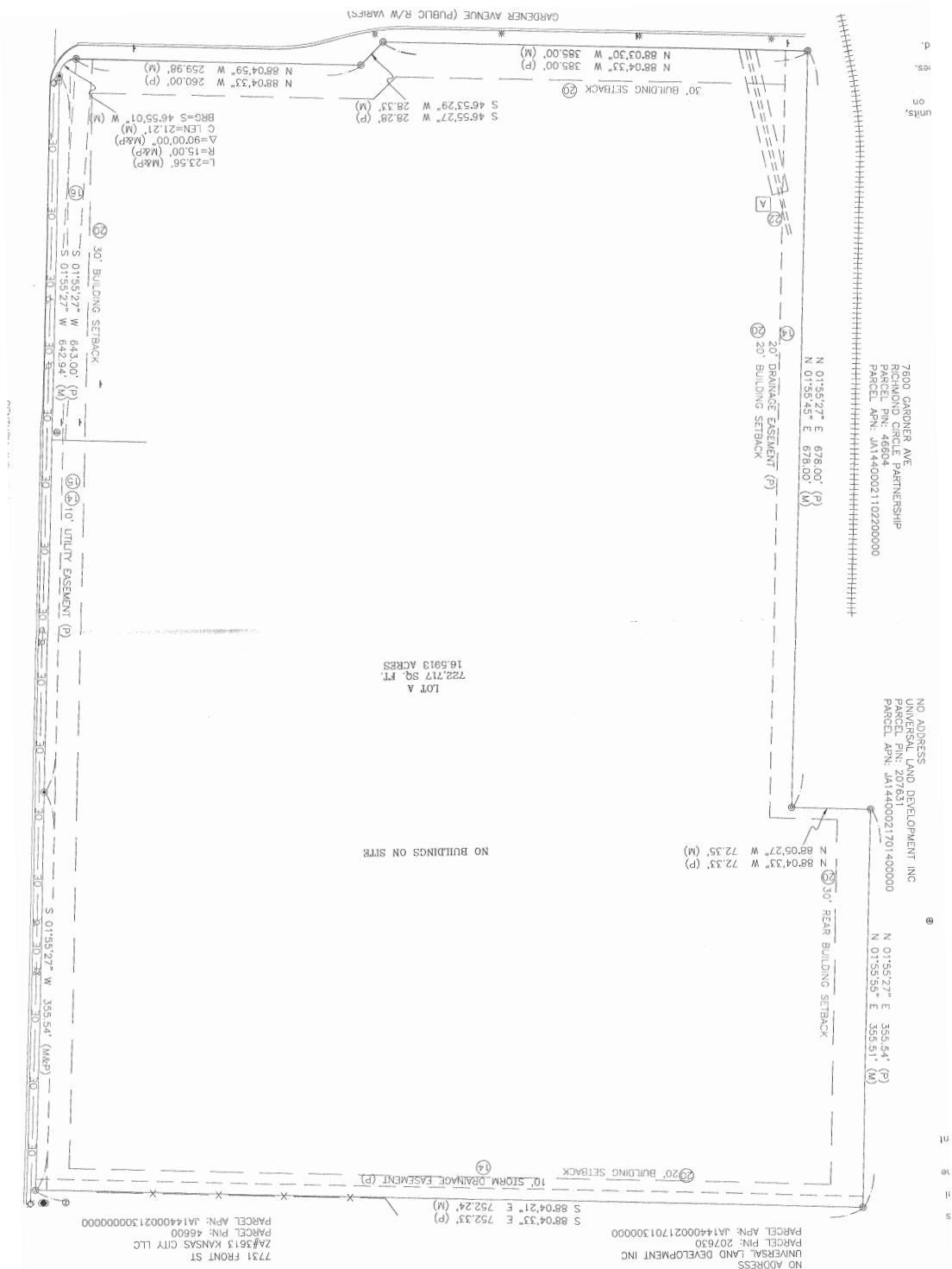
Building Floor Plan



1250-1260 N. Corrington Avenue, Kansas City, MO

For Lease

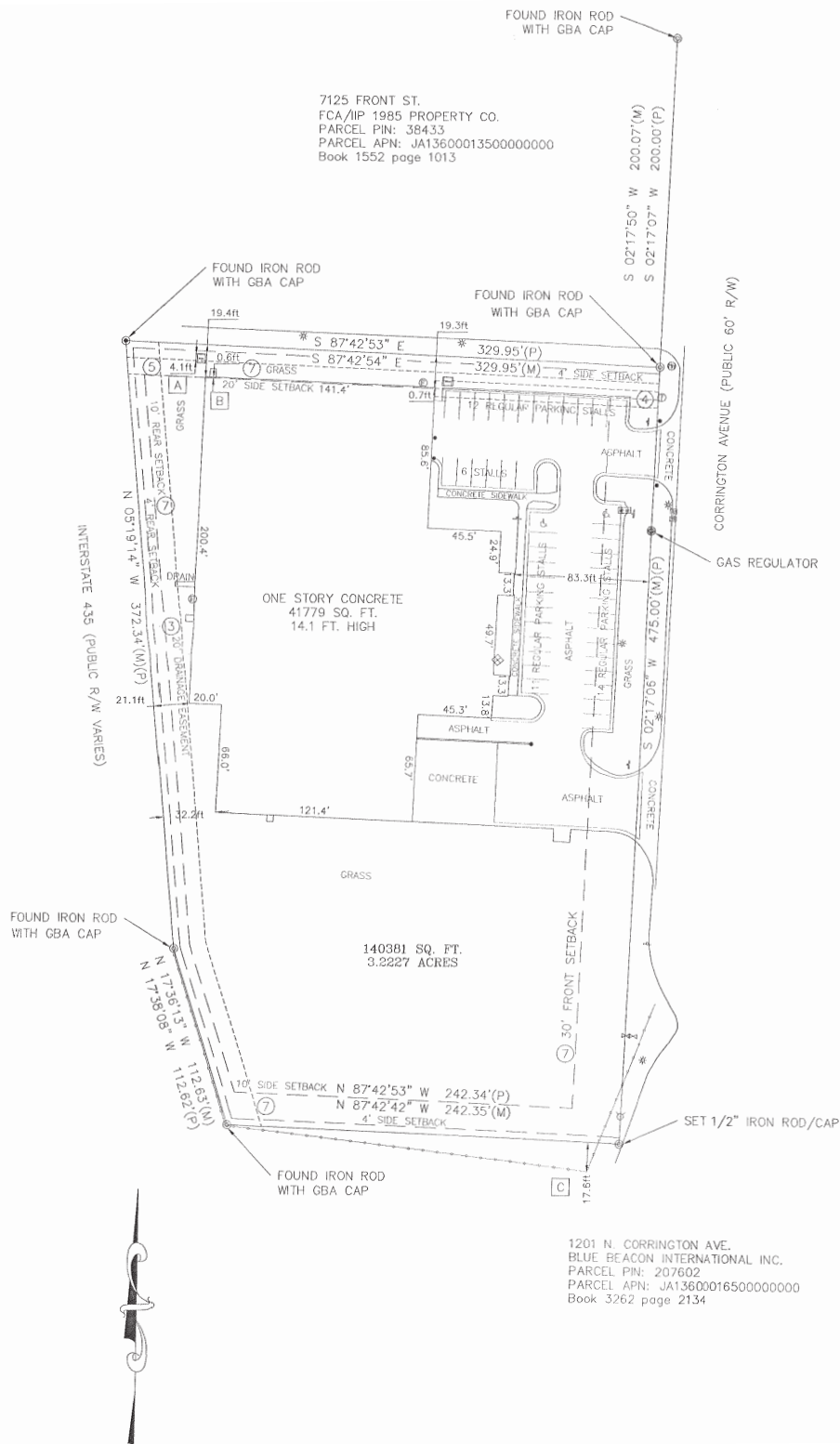
Land Survey



1250-1260 N. Corrington Avenue, Kansas City, MO

For Lease

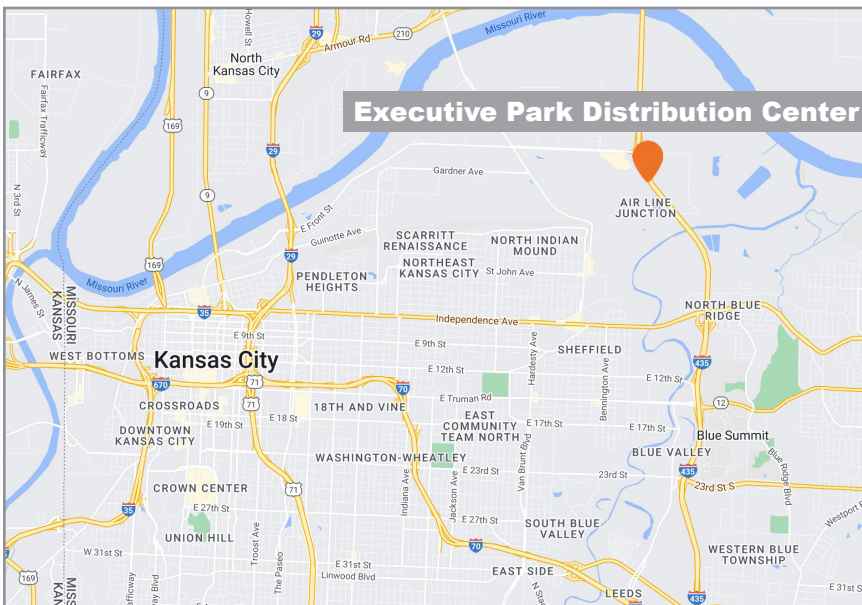
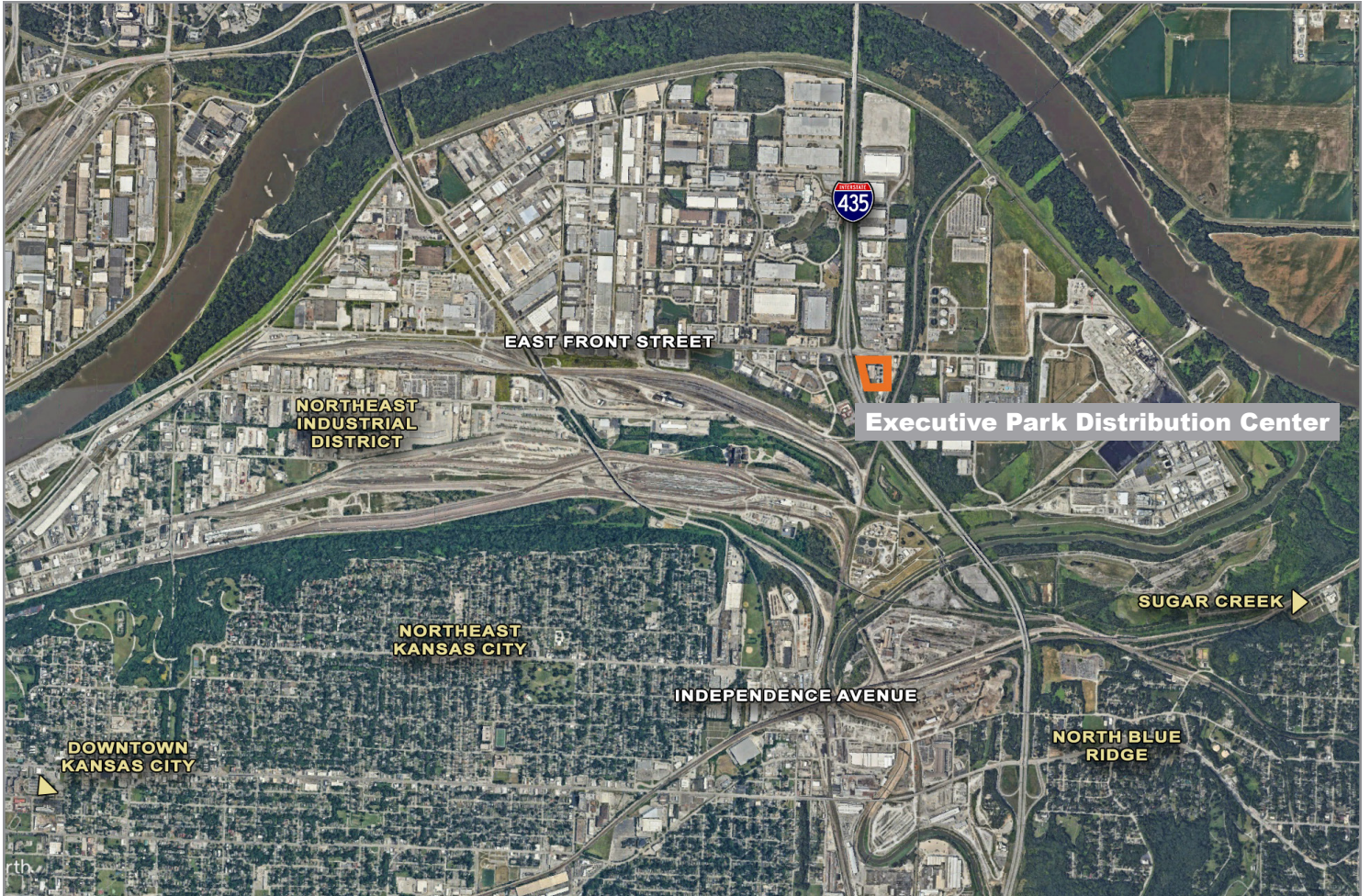
Land Survey



Executive Park Distribution Center

1250-1260 N. Corrington Avenue, Kansas City, MO

For Lease



For more information:

Zach Hubbard

816.932.5504

zhubbard@blockllc.com

Blaise Gunnerson

816.878.6314

bgunnerson@blockllc.com