

Center of Kansas City - Manufacturing / Distribution Warehouse



North Building



South Building

Heart of the City between I-70 and I-35

- 99,027 SF - South Building
- 76,838 SF - North Building
- Heavy electrical power for manufacturing
- Located in the center of Kansas City between I-70 and I-35
- Building and monument signage available
- Dock-high and drive-in ramps
- 22' clear height in warehouse (North has clerestory windows and South has sky lights)
- Fenced loading areas and additional fenced storage between buildings

For more information:

Christian Wead
816.412.8472
cwead@blockllc.com

Michael R. Block, CPM
816.932.5549
mblock@blockllc.com

The information contained in this marketing flyer is presented as general information only. Block Real Estate Services, LLC. makes no representation as to its accuracy. This information is not intended as legal, financial or real estate advice and must not be relied upon as such. You should make your own inquiries, obtain independent inspections, and seek professional advice tailored to your specific circumstances before making any legal, financial or real estate decisions.

Building Specifications

Total Square Feet:	North Building: 76,838 SF South Building: 99,027 SF
Dimensions:	North Building: 150 to 175' deep (varies - see plan) South Building: 210' deep by 442' wide East/West
Column Spacing:	North Building: 40' x 50' and 32' x 50' South Building: 40' x 52' + speed & rail bays 41' x 52' + east/west bays are 53' (see plan)
Structure:	Brick and block with structural steel columns/roof
Ceiling Height:	Clear height from north wall (rear) to south wall (front) and at each column in between is: 22'4", 22', 21'8", 21'4", 21'1" Height to the underside of the roof deck, measured same as above from north to south is: 25', 24'7", 24'3", 23'11", 23'9"
Loading:	North Building: 11 dock-high doors. Doors are 10' x 10'. Two drive-in ramps, one is 12' x 14' and one is 14' x 14'. All dock doors have 30,000 pound edge of dock levelers. Can add drive-in door on East end. South Building: 15 dock-high doors and all are 10' x 10', one is van-high. One - 12' x 14' drive-in ramp and one is a forklift ramp. Most docks have pit or edge of dock levelers and shelters. Can add drive-in door on East end.
Trailer Side Loading/ Fenced Storage:	Available via paved former rail area between north and south buildings - both buildings.
Office/Showroom:	North Building: 3,222 SF to 6,297 SF South Building: 2,271 SF to 9,450 SF Unit #830: S. St. Paul - Mezzanine above east end of office for light storage
Floor Type:	Concrete - 5" with 6x6 #6 wire mesh over crushed rock fill
Lighting Type:	North Building: T-5 with motion sensors - Augmented by Clerestory Windows South Building: LED and T-5 with motion sensors - Augmented by Sky Lights Unit #640: (42,210 SF) LED with motion sensors Unit #830: S. St. Paul (17,010 SF) LED with motion sensors

Building Specifications - Continued

North Building:

Sprinkler Type: Occupancy Group Type: Warehouse = Ordinary Hazard Group I/II
Office Area = Not Sprinklered (Light Hazard)
Design Density of = .20 over 2,174 square feet
Head Spacing of 120 SqFt or 10' x 12' spacing

Water Pressure Flow of: Static Pressure = 103 psi
Residual Press. = 98 psi
GPM Flow = 1124 gallons per minute

This particular type of system is considered a "Pipe Scheduled" system and was utilized prior to the mainstream use of "Hydraulically Calculated" systems. The numbers in the hydraulic calculation are based on measurements and dimensions taken on-site and water flow test data taken.

Exterior Lighting: Provided over all dock loading areas, parking lots and rear alley/loading

Ventilation: Unit #640 & 830: "Big Ass Fans" brand fans installed as well as gate on north side, former rail dock openings to provide for cross-dock ventilation

HVAC in Warehouse: Unit heaters - FAG

Electric Service: North Building: Has two transformers with 5,000Kva of available power; twin 4,000 amps, 480 volt services.
South Building: The South building's main distribution panel is a 600 amp, 120/208V service split between 3 meters/spaces.
Electrical power to the Skymark warehouse is 364 KVA – connected load with 480/277-volt 3-phase 600 Amps which is fed by a 100 Amp transformer. Columns have 50 Amp breaker for welding.

Water Service: BPU

Gas Service: KPL Gas Service

Year Built: North Building: 1968
South Building: 1971

Building Specifications - Continued

	South Building*	North Building*
Net Charges:*(2024 Estimates)	CAM: \$0.64 PSF	CAM: \$0.27 PSF
	INS: \$0.11 PSF	INS: \$0.05 PSF
	<u>RE TAXES: \$0.96 PSF</u>	<u>RE TAXES: \$0.42 PSF</u>
	TOTAL: \$1.71 PSF	TOTAL: \$0.74 PSF
	*Note: Lease is a Modified Gross Industrial with a Base Year for real estate taxes and insurance and tenant paying prorata CAM.	

Notes: 50+ cars, more can be striped, depending on dock usage - trailer parking available in fenced lot. (North Building)
100 - 120' truck dock maneuvering in fenced lot. (North Building)

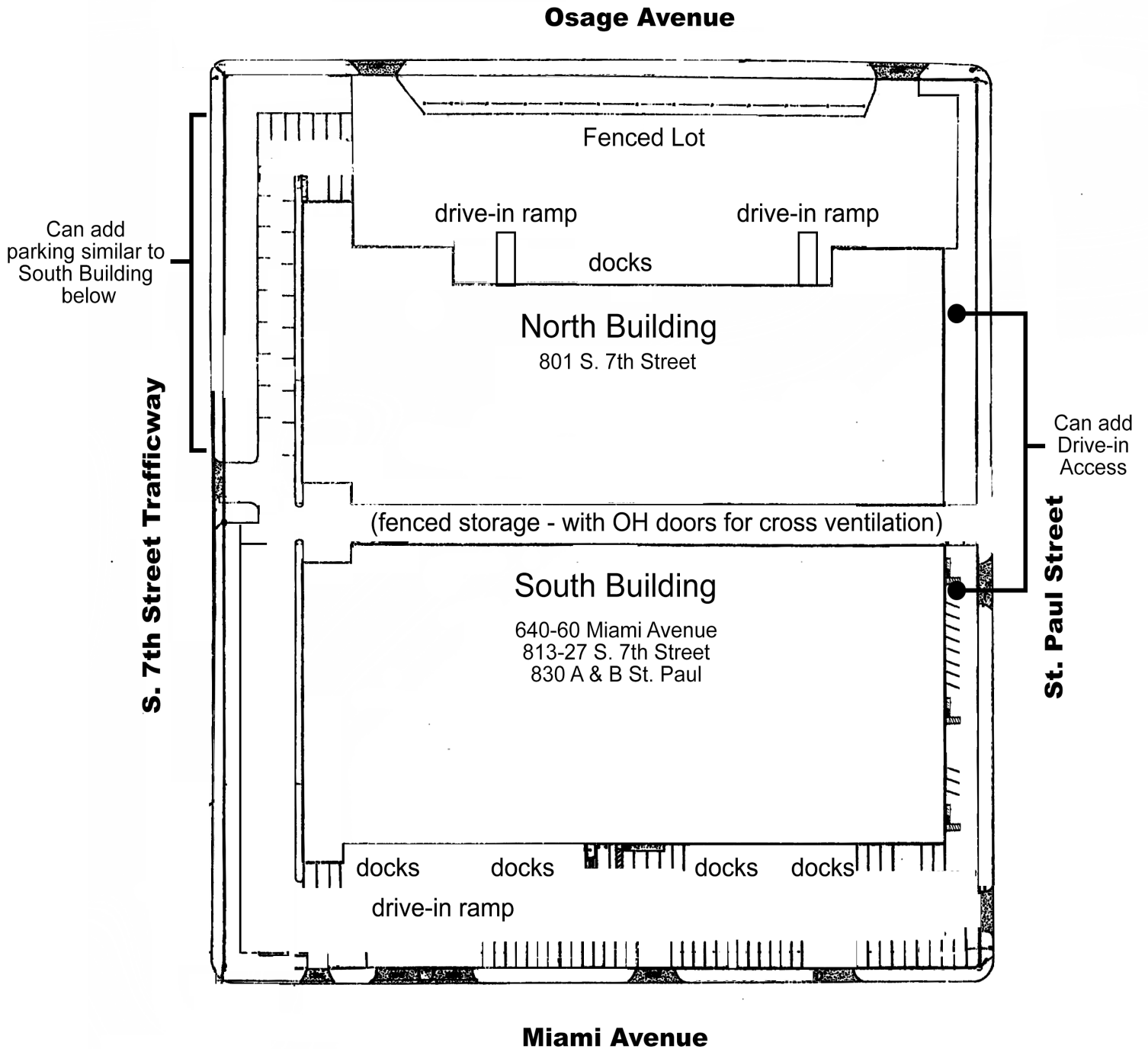
Zoning: M-3, Heavy Industrial

South Building Dock Information: (from West to East):			
	Dock #1	10' x 10'	edge of dock
	Dock #2-3	8' x 10'	edge of dock
	Dock #4	12' x 14'	drive-in ramp
	Dock #5	10' x 10'	seal and pit leveler
	Dock #6-9	10' x 10'	seal and bumpers
	Dock #10	10' x 10'	seal and pit leveler and a low-dock ramp
	Dock #11	10' x 10'	seal and pit leveler
	Dock #12	10' x 10'	concrete pad for a trash compactor w/ ventilation gate
	Dock #13	10' x 10'	ventilation gate
	Dock #14-16	10' x 10'	seal and pit leveler

North Building Dock Information (from West to East):	Dock #1-2, 4-10	EOD leveler with dock shelter
	Dock #3, 11	Drive-in ramp to 12' x 14' overhead door with electric opener
	Dock #12-13	EOD leveler with dock seal
	On the rear doors they are "wood" on #2, 3, 4, 5, 10, 11 and steel on #6, 7, 8 and door 1 is exhaust fans.	
	On the front doors (truck loading side), they are wood doors on #1, 4, 5, 8, 10, 12, 13 and steel doors on #2, 3, 6, 7, 9.	



Site Plan

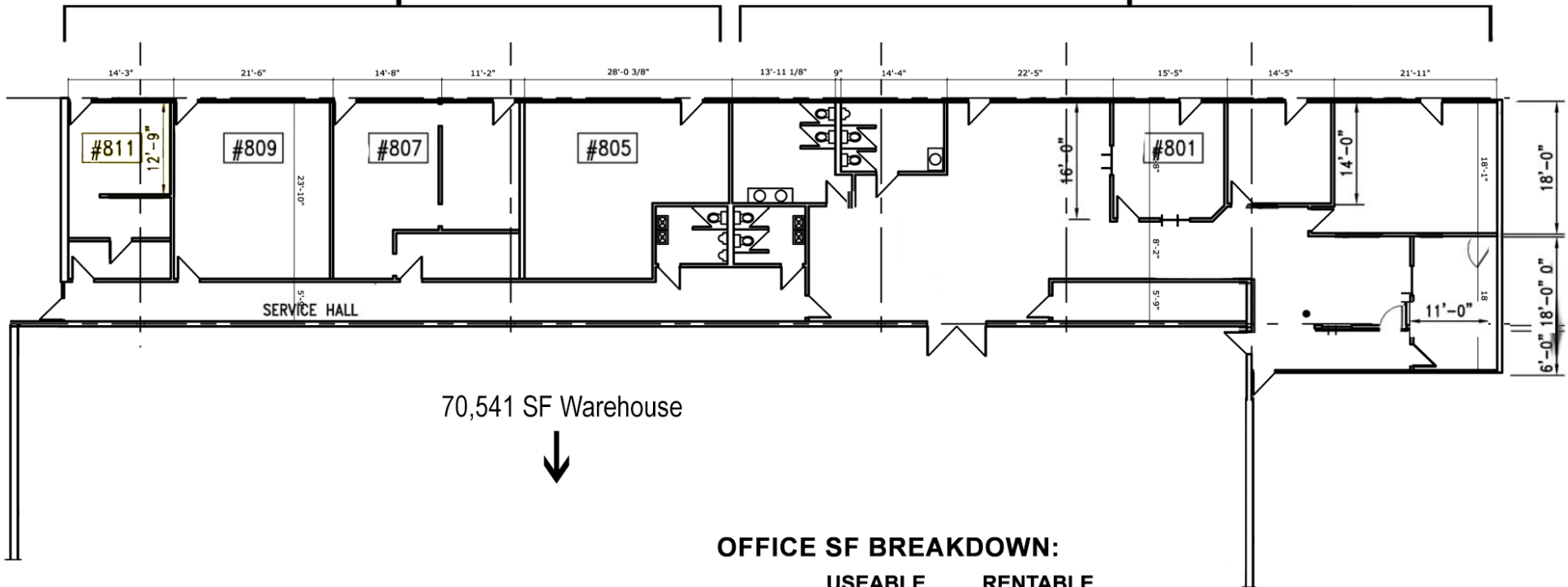


North Building: Office Detailed Plan

6,297 SF Office

3,075 SF

3,222 SF



70,541 SF Warehouse

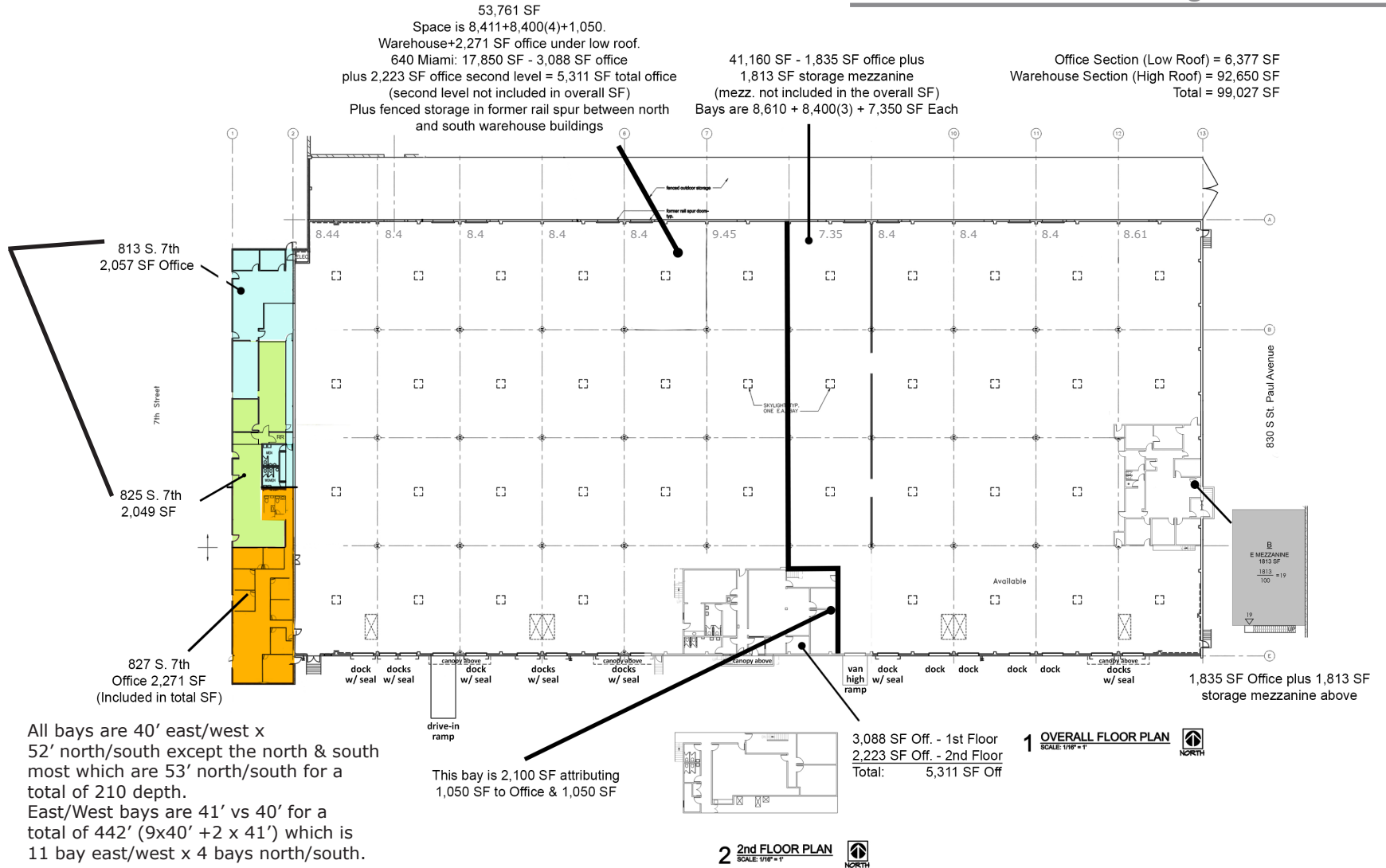
OFFICE SF BREAKDOWN:

	USEABLE	RENTABLE
#801	N/A	3,222
#805	817	1,028
#807	689	867
#809	567	713
#811	371	467
TOTAL	5,666	6,297

FLOOR PLAN
SCALE 1/16" = 1'-0"



South Building Floor Plan

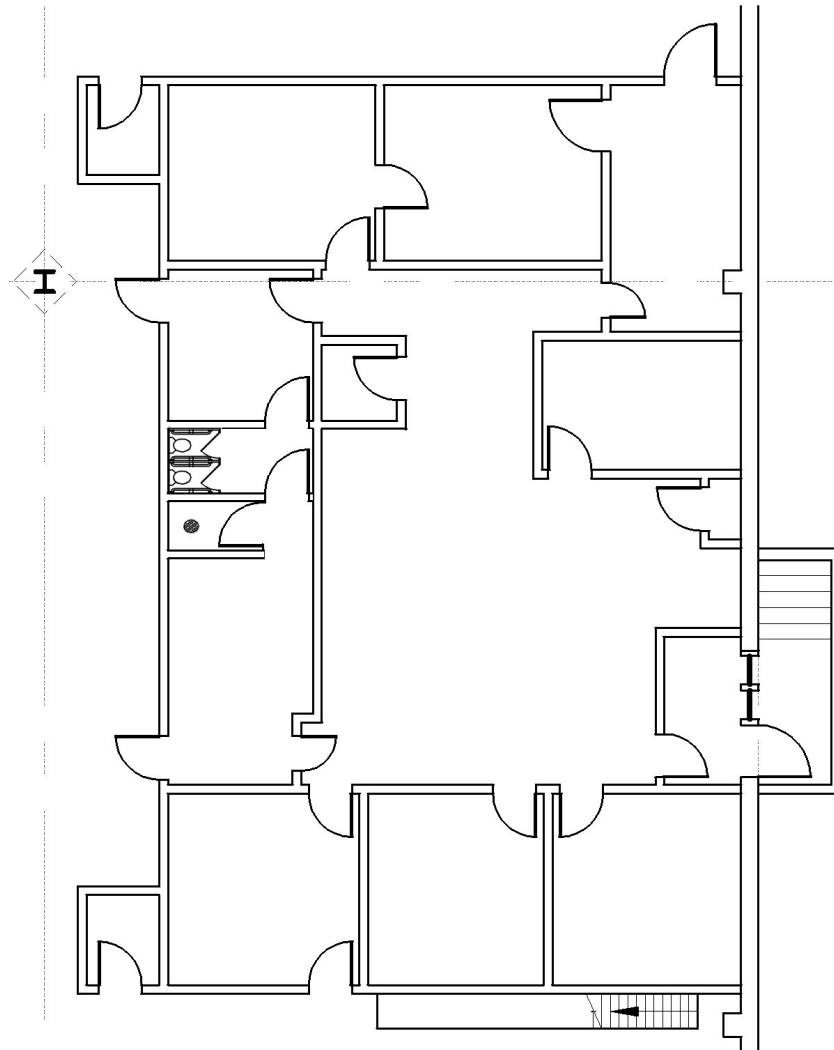


Armourdale Warehouses

801 S. 7th Street/640 Miami Avenue, Kansas City, Kansas

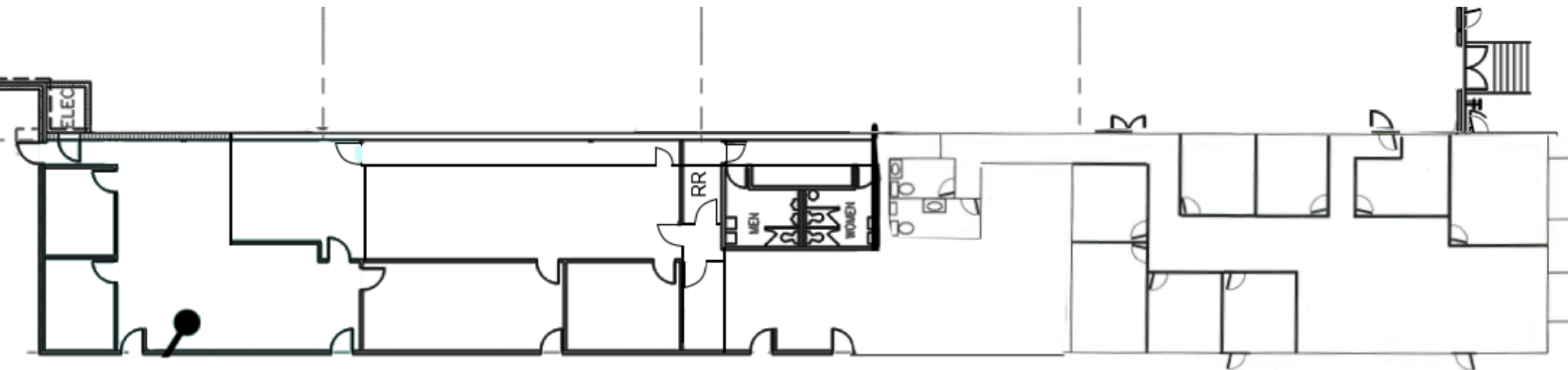
For Lease/Sale

South Building: 830 S St. Paul Office Plan



1,835 sq ft office
1,813 sq ft mezz. storage

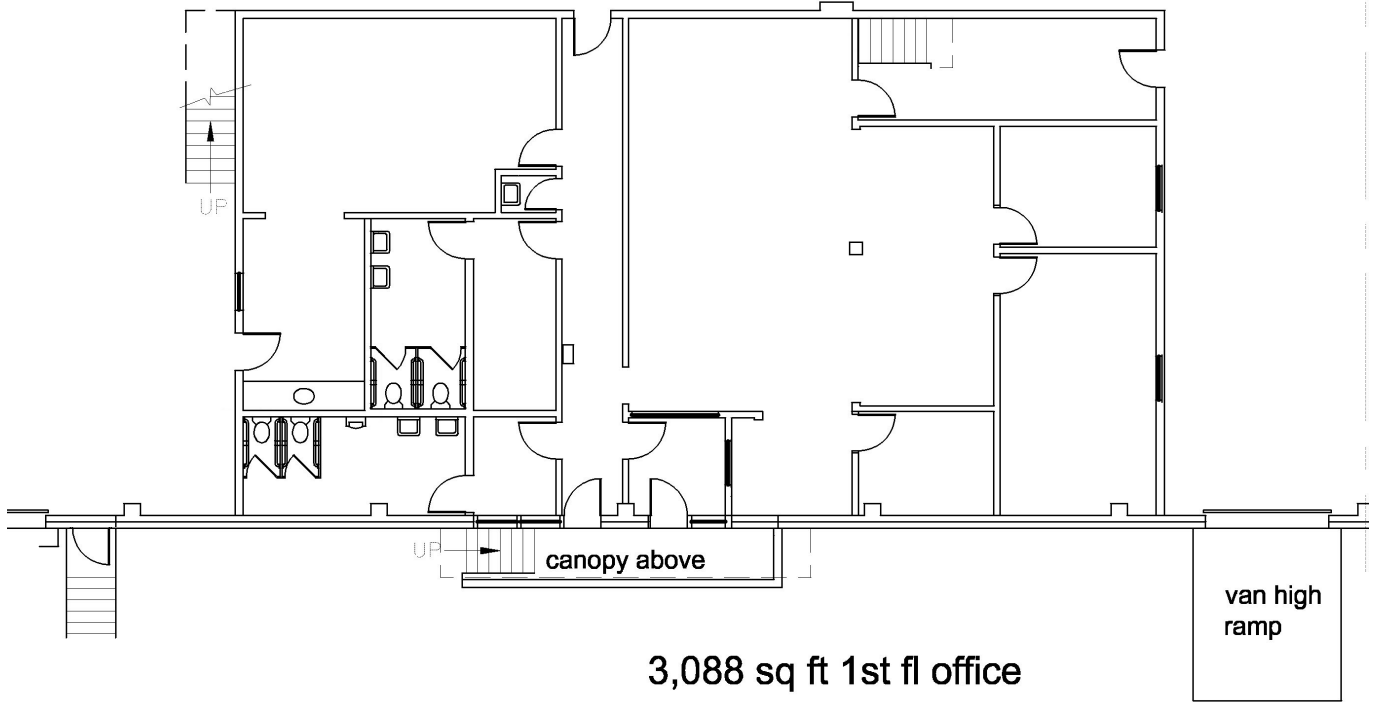
South Building: Front Office Detailed Plan



813-27 S. 7th St.
Trafficway

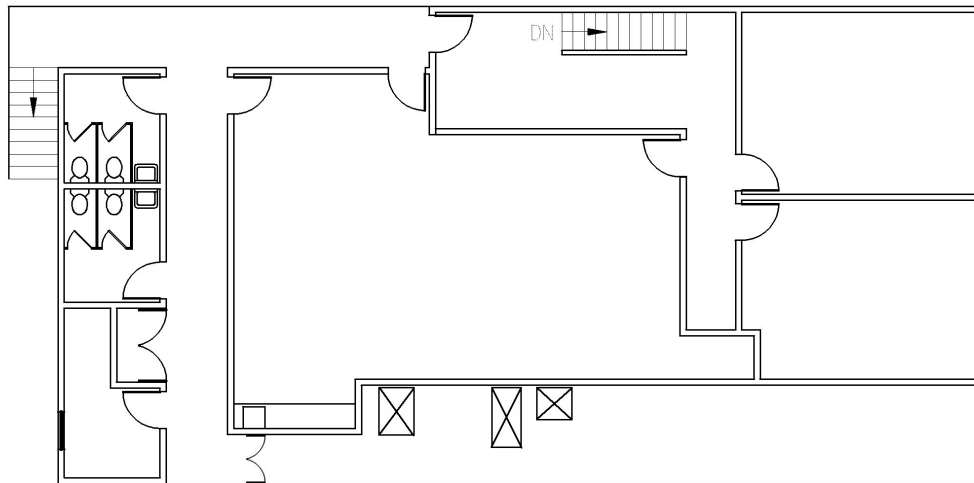
South Building: 640 Miami Facing Office Plan

1st Floor



3,088 sq ft 1st fl office
2,223 sq ft 2nd fl office
5,311 sq ft total

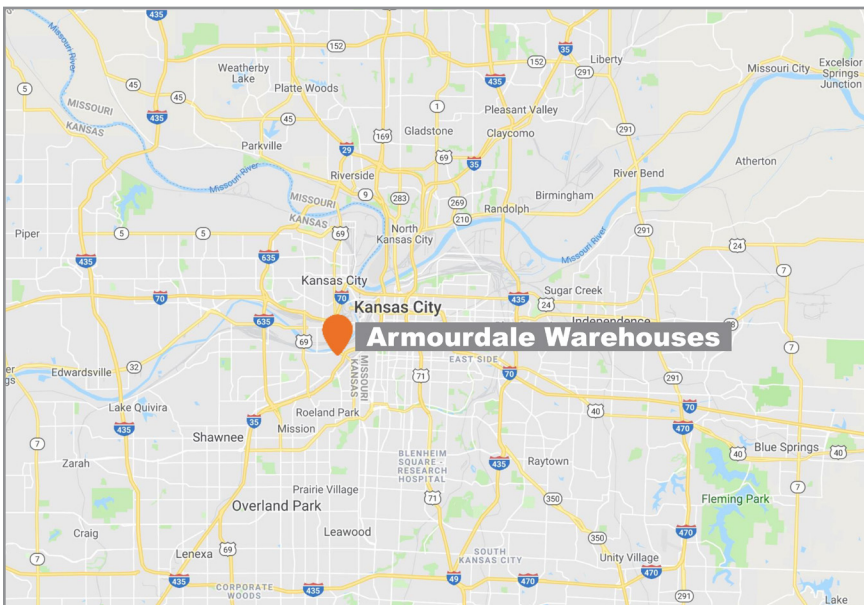
2nd Floor



Armourdale Warehouses

801 S. 7th Street/640 Miami Avenue, Kansas City, Kansas

For Lease/Sale



For more information:

Christian Wead

816.412.8472

cwead@blockllc.com

Michael R. Block, CPM

816.932.5549

mblock@blockllc.com