

Corporate Medical Plaza III



Northeast Corner of I-435 and Nall Avenue

- 2,872 SF medical office space available
- Easy access on the first floor
- Efficient space with two points of entry/exit
- Key Card access to the building

For more information:

Max Wasserstrom, CFA
816.412.8428
mwasserstrom@blockllc.com

Andrew T. Block
816.412.5873
ablock@blockllc.com

Reid Kusic
816.878.6316
rkusic@blockllc.com

The information contained in this marketing flyer is presented as general information only. Block Real Estate Services, LLC makes no representation as to its accuracy. This information is not intended as legal, financial or real estate advice and must not be relied upon as such. You should make your own inquiries, obtain independent inspections, and seek professional advice tailored to your specific circumstances before making any legal, financial or real estate decisions.

Building Specifications

Building Description: The Corporate Medical Plaza complex consists of one two-story and two three-story, high image, corporate medical office buildings. Superior construction and building systems, convenient interstate access, ample parking, and a South Johnson County location make the Corporate Medical Plaza complex an ideal long term medical/office building location.

Suites Available: Building I: 100 % Leased
Building II: 100% Leased
Building III: 2,872 RSF

Year Completed Building I: January 1, 2006
Building II: Spring 2006
Building III: August 2007

Year Renovated 2008

Parking: 4.6 spaces per 1,000 square feet

Elevators Building 3 features 2 high speed, computer controlled elevators

Fire Protection Completely sprinklered and monitored off-site 24 hours a day

Telecommunications Multiple high-speed voice and data services, as well as choice of fiber optic and wireless communication carriers

Hours of Operation Monday- Friday: 7:00 a.m. - 6:00 p.m.
Saturday: 8:00 a.m. - 1:00 p.m.

Security The building entrances have a computer integrated security system, with 24-hour card access

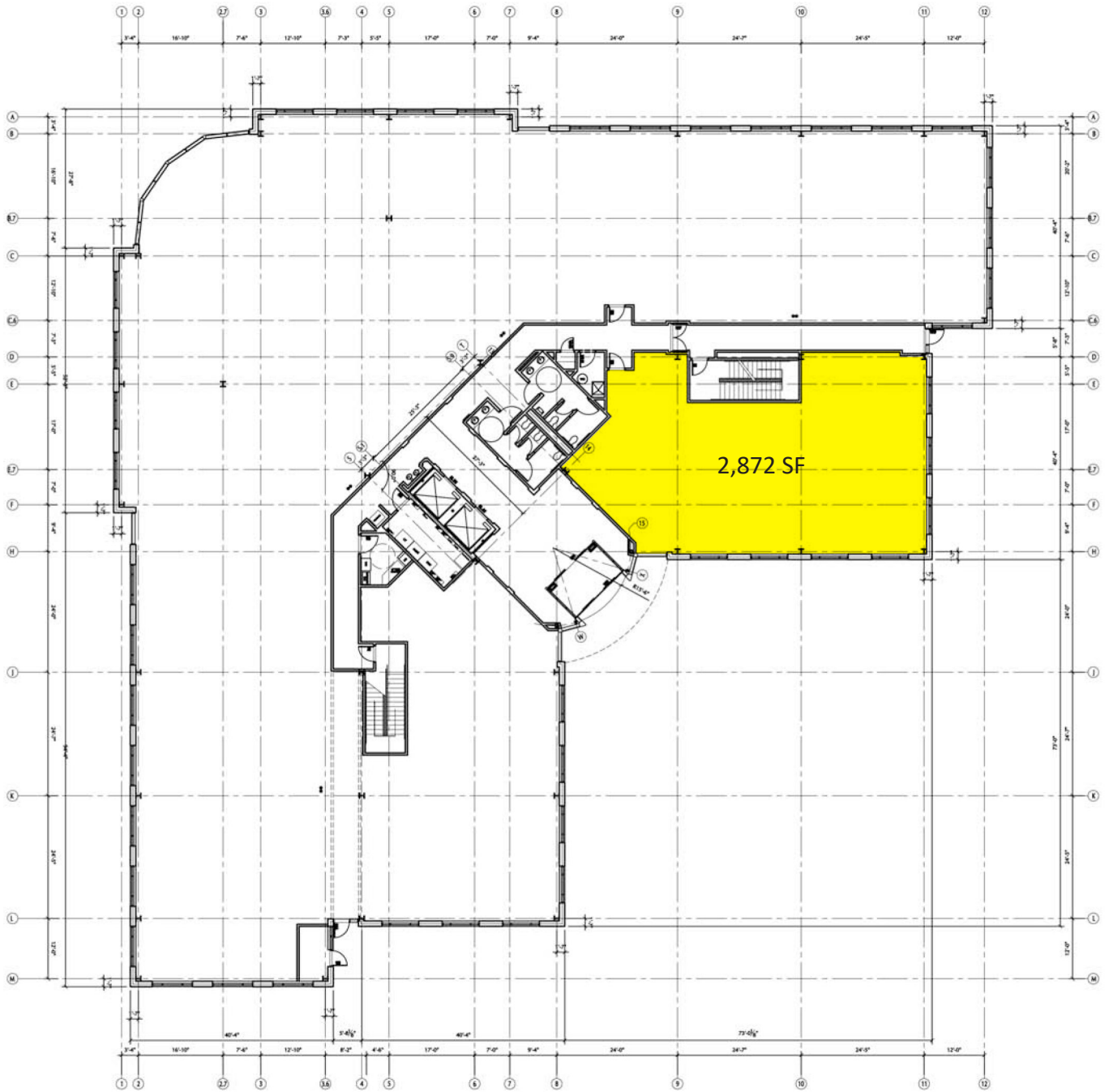
For more information:

Max Wasserstrom, CFA
816.412.8428
mwasserstrom@blockllc.com

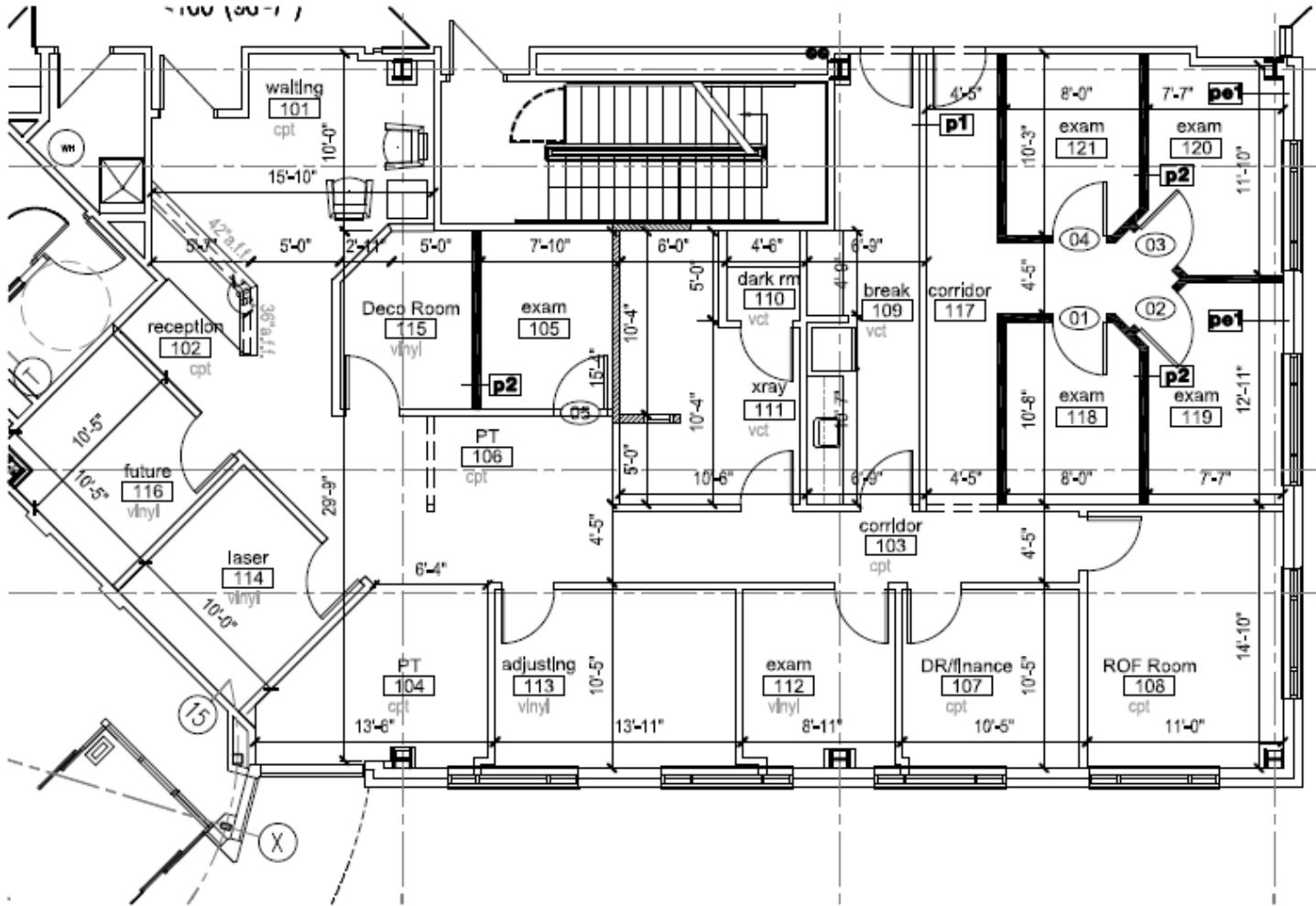
Andrew T. Block
816.412.5873
ablock@blockllc.com

Reid Kasic
816.878.6316
rkasic@blockllc.com

Building Floor Plan



First Floor Vacancy



1 floor plan
scale: 1/8" = 1'-0"

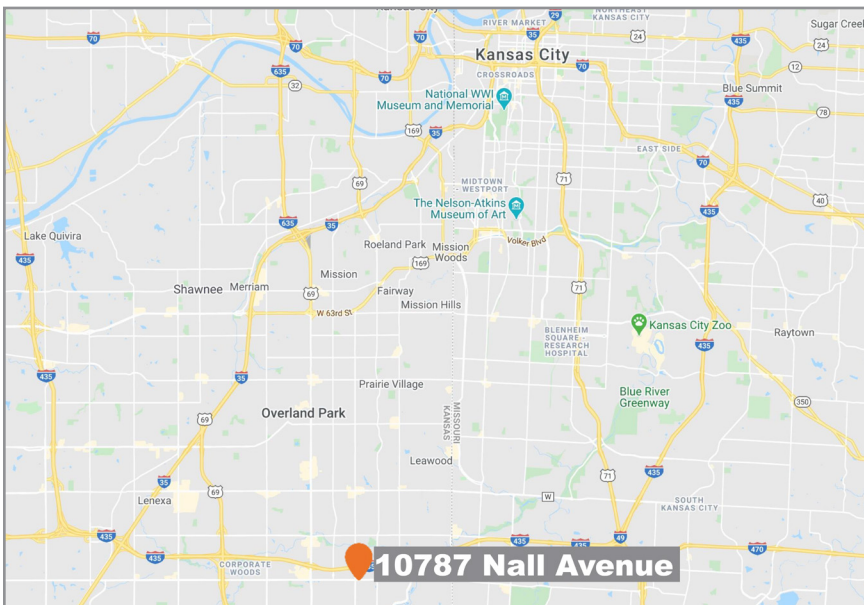




10787 Nall Avenue

Overland Park, Kansas 66211

For Lease



For more information:

Max Wasserstrom, CFA
816.412.8428
mwasserstrom@blockllc.com

Andrew T. Block
816.412.5873
ablock@blockllc.com

Reid Kosic
816.878.6316
rkosic@blockllc.com

4622 Pennsylvania Ave., Suite 700
Kansas City, MO 64112
816.756.1400 | www.BLOCKLLC.com

BLOCK
REAL ESTATE SERVICES, LLC